

ISLE OF ANGLESEY COUNTY COUNCIL

**Committee: Environment and Technical Services
Scrutiny Committee**

Date of the meeting: 26 July 2011

Relevant Corporate Director: Arthur Owen

Relevant Commissioner: Alex Aldridge

Delivery Agreement – Joint Anglesey and Gwynedd Local Development Plan

1.0 Purpose of the Report

- 1.1 To present the Delivery Agreement for the Joint Anglesey and Gwynedd Local Development Plan following a period of public consultation.
- 1.2 To seek the support of the Scrutiny Committee for the contents of the Delivery Agreement in order that it may be submitted, for approval, to the Commissioner responsible for Planning and subsequently to the full Council for adoption. The Appendix can be seen on the Isle of Anglesey County Council's Committee pages at www.ynysmon.gov.uk .

2.0 Matters for Scrutiny

- 2.1 Are the responses to consultation received during the consultation period reasonable (Appendix 2)?
- 2.2 Have the Welsh Government's criteria for undertaking assessments of the Delivery Agreement been satisfied (Appendix 3)?
- 2.3 Does the Delivery Agreement fully address equality issues so that, in turn, the Joint Local Development Plan will also have full regard to equality implications (Appendix 4)?

(The Appendices can be seen on the Isle of Anglesey County Council's Committee pages at www.ynysmon.gov.uk)

3.0 Background

3.1 The Isle of Anglesey County Council and Gwynedd Council have already begun to prepare a Joint Local Development Plan for the Gwynedd and Anglesey Planning Authority area. In accordance with the Regulations for the preparation of Joint LDPs, the first step in the process is to prepare a Delivery Agreement.

3.2 This report presents information regarding:

- The contents and function of the Delivery Agreement
- The process of preparing the Delivery Agreement so far,
- The next steps.

4. What is the Delivery Agreement (DA)?

4.1 The finalised DA is an important and legal part of the process of drawing up the Joint LDP, and will constitute an official agreement between the Councils of Anglesey and Gwynedd and the Welsh Government. During the public inspection of the Joint LDP, any departures from the DA not agreed by the Welsh Government will form an important test of the robustness of the Joint LDP. The contents of the DA and the Council's method of implementation will therefore will be vital to the overall success of the Joint LDP.

4.2 There are two main sections to the DA:

Section A – The Joint LDP Preparation Timetable Management Plan which states:

- The timetable for the preparation of the Joint LDP
- The scope and the influence of the Joint LDP
- Factors likely to influence the preparation of the Joint LDP and its contents
- The budgetary and staff resources commitment within the Councils for the preparation of the LDP.

The Welsh Government is promoting a 4 year timetable for the preparation of local development plans.

Section B – Community Engagement Scheme, which states:

- Whom the Councils will engage with in the preparation of the Joint LDP;
- How and when Council officers, elected members, the public, interested groups in the area and developers can contribute to the entire process;
- How responses will be dealt with.

- 4.3 The Councils will need to monitor progress against the contents of the DA. If revisions will be required, then the same process will have to be followed again. The public enquiry inspector will scrutinise the documents in order to reach a conclusion with regard to the robustness of the Joint LDP. He will consider a number of tests for robustness including the following:

G1 That the plan has been prepared in accordance with the Delivery Agreement including the Community Engagement Plan.

5. Drawing Up the Draft Delivery Agreement

- 5.1 The following actions have been taken to draw up the DA hitherto:

- The Joint Planning Policy Unit drawing up the draft of the DA for consultation with a view to the expectations of the Welsh Government (see section 7 of this report), and in consultation with the Environment Scrutiny Committee of Gwynedd Council, the Isle of Anglesey's Scrutiny Committee and the Joint Planning Policy Unit Committee.
- Consultation with the public and General and Specific Advisory bodies (see section 6 of this report).
- Reviewing the DA with the Joint Planning Policy Committee following public consultation.
- Reviewing the DA against Equality Impact Assessment criteria.
- Reviewing the DA with the Gwynedd Council Environment Scrutiny Committee.

- 5.2 These are the next stages in the process of completing the DA.

- To seek full approval for the DA from the Isle of Anglesey County Council's Commissioner (following the Scrutiny Committee) and the Board of Gwynedd Council (26/7/11)
- To approve the DA through resolution of the Isle of Anglesey County Council (13/9/11) and Gwynedd Council (20/10/11) to be submitted to the Welsh Government (WG)
- To seek the approval of the Welsh Government for the DA
- To publish the agreed DA and to place it on deposit for inspection.

6. The public consultation on the draft DA for consultation

- 6.1 In accordance with the relevant Regulations, the following steps have been taken to raise awareness of the DA:

- A notice in the local papers;
- To deposit the consultation draft of the DA, an executive summary of the DA consultation draft, a representations form on the website of both Councils, in the local public libraries and in the main Council offices of both Councils;

- To write to the General and Specific Advisory Bodies;
- To write to individuals and other stakeholders on the register of both Councils of interested parties in the Joint LDP.

6.2 The public consultation began on 14 April 2011 and came to an end on 2 June 2011. 25 observations were received during this consultation period.

6.3 The individuals and organisations which responded were generally satisfied with the contents of the DA, with only minor revisions being suggested. A summary of the observations and the responses can be seen in Appendix 2 to this report. The Anglesey and Gwynedd Joint Planning Policy Committee and the Environment Scrutiny Committee of Gwynedd Council have approved the suggested response to the observations received during the public consultation.

6.4 The Committee is requested to scrutinise the contents of Appendix 2 and to approve its contents.

7. The Welsh Government's Expectations for the Delivery Agreement

7.1 The Welsh Government has published a manual providing detailed practical and technical advice on aspects of the production of the local development plans and it is expected to complement the legislation, regulations and the relevant guidelines relating to the preparation of local development plans. The delivery agreement in Appendix 1 was prepared with these documents in mind.

7.2 As noted in 4.1 above, the DA must be approved by WG. The appendix to the Welsh Government's manual clarifies that brief additional comments must be presented outlining how the Welsh Government's criteria were met for assessment of the DA submitted to the WG.

7.3 Appendix 3 to this report includes WG's criteria and the responses. The Committee is requested to scrutinize the contents of Appendix 3 and approve its contents.

8. Equality Impact Assessment of the Delivery Agreement Consultation Draft

8.1 The aim of the Joint LDP will be to provide a clear vision of how new developments and land use can address the opportunities and challenges faced by the Anglesey and Gwynedd planning areas. In order to ensure that the Joint LDP is inclusive and does not discriminate against sections of the community, it must be the subject of an Equality Impact Assessment. This will be a recurring process. As the DA states the following, the DA has been subject to an EIA.

- Who the Councils will be engaging with in preparing the Joint LDP;
- How and when officers, Elected Members, the public, interested groups and developers can contribute to the whole process;
- What will happen to the responses.

8.2 Appendix 4 to this report includes the findings of the Equality Impact Assessment. The Committee is requested to scrutinize the contents of Appendix 4 and the Delivery Agreement in Appendix 1 in order to ensure that equality requirements are fully addressed.

Nia Haf Davies, Planning Manager (Policy), Anglesey and Gwynedd Joint Planning Policy Unit

9 July 2011

Appendices

Appendix 1: Draft Delivery Agreement – Joint Local Development Plan (Anglesey and Gwynedd)

Appendix 2: Response to the local public consultation

Appendix 3: Criteria for assessing delivery agreement

Appendix 4: Equality Impact Assessment

Previous relevant decisions made by the Council, the Executive Committee or the Local Service Board

No previous relevant decisions.

Background Paper

Town and Country Planning Regulations (Local Development Plan)(Wales) 2005;

Local Development Plans Manual (2006)

APPENDIX 1



Draft Anglesey and Gwynedd Joint Local Development Plan Delivery Agreement

DRAFT

APPENDIX 1

Empty Page

Contents

	Page
Part 1: Context	1
Introduction	1
What is a Local development Plan	3
What is a Delivery Agreement	4
Preparing the Delivery Agreement	5
SECTION A: JOINT LDP PREPARATION	6
MANAGEMENT PLAN	
Part 2: Scope of the Joint LDP and how it is influenced	6
Scope of the Joint LDP	6
Likely Format of the Joint LDP	9
Supplementary Planning Guidelines	10
Sustainability Assessment (including a Strategic Environmental Assessment and a Appropriate Assessment	10
Links with key national, regional and adjoining local policies and strategies	11
Other plans and strategies for Anglesey and Gwynedd	11
Tests of Soundness	13
PART 3: The Resources and the Timetable	14
The resources - staff	14
The resources – funding	17
The timetable	17
Part 4: Risk management	19
Making decisions	19
Factors that could influence the process	19
PART 5: Monitoring and Reviewing	20
Monitoring and reviewing against the DA	20
Annual monitoring Reports	20
Reviewing the Joint LDP	21
SECTION B – COMMUNITY INVOLVEMENT	22
SCHEME	
PART 6 – Scope of the community Involvement Scheme (CIS)	22
Introduction	22
Aims and Principles of the CIS	22
From whom will we expect input?	24
When will the communities and key stakeholders participate in the process?	24
Methods of Engaging, Consulting and Participating	26
Links with the Wales Spatial Plan and Joint working	27
Councillor Involvement	27
Involvement of Council Officers	28
Document Availability and Feedback	28

APPENDIX 1

The use of the Welsh language and other languages	29
What will be expected of the communities and key stakeholders?	29
The Candidate Sites Register	29
Appendices	
Appendix 1: Flow chart of the Delivery Agreement preparation process	31
Appendix 2: Key Strategic Facts and Figures	32
Appendix 3: Key stages in the process of preparing the Joint LDP and participation opportunities	35
Appendix 4: The role of different committees in the process of preparing the Joint LDP	71
Appendix 5: Tests of soundness	72
Appendix 6: Possible risks and response methods	73
Appendix 7: General Consultation Bodies	77
Appendix 8: Specific Consultation Bodies	80
Appendix 9: Key Stakeholder Group	83

Anglesey and Gwynedd Joint Local Development Plan Delivery Agreement

PART 1: Context

1.1 Introduction

1.1.1 The Planning and Compulsory Purchase Act 2004 makes it a requirement for local planning authorities in Wales to prepare a **Local Development Plan** (LDP) for their areas. Anglesey County Council and Gwynedd Council have decided to prepare the LDP jointly for Anglesey and Gwynedd Planning Authority areas. Those areas of Gwynedd inside the Snowdonia National Park do not form part of the Joint LDP area. The map on the following page shows the Joint LDP area.

1.1.2 When the Joint LDP is adopted, it will replace the Development Plans shown in the table below. It will also replace the Anglesey Unitary Development Plan (that was stopped in 2005), which currently is a material planning consideration for determining planning applications by Anglesey County Council.

<u>Anglesey Planning Authority Area</u>	<u>Gwynedd Planning Authority Area</u>
<ul style="list-style-type: none">• Gwynedd Structure Plan (1993)• Isle of Anglesey Local Plan (1996)	<ul style="list-style-type: none">• Gwynedd Unitary Development Plan (2009)

Table 1: List of Development Plans that will be replaced after adopting the Joint LDP

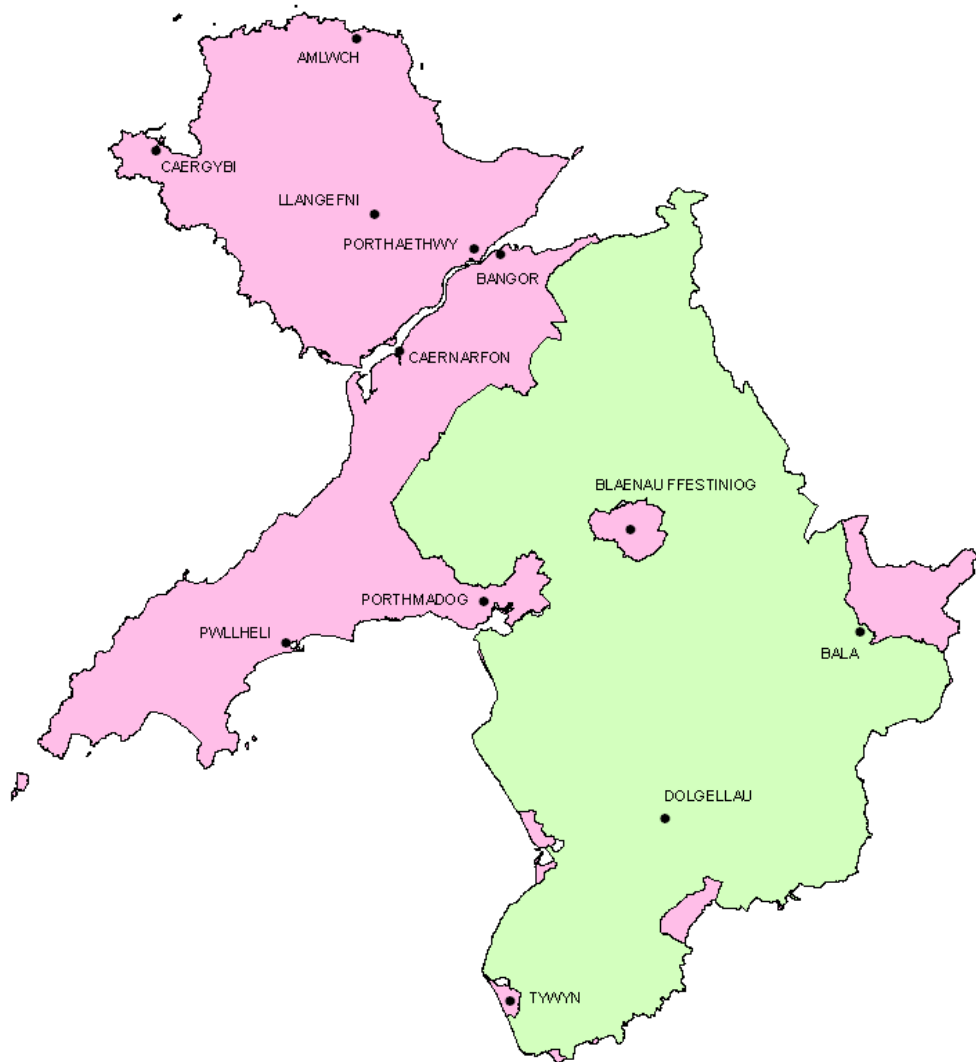
Once the Joint LDP is adopted, the majority of decisions on planning applications in the two Planning Authority areas will be based on the contents of the Joint LDP.

1.1.3 Some of the main objectives of preparing the Joint LDP are the following:


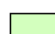
- complete a plan that will be the basis of decisions on planning applications that will be more relevant, inclusive and attractive to local communities, and to
- encourage collaboration amongst key partners.

1.1.4 Firstly, Anglesey County Council and Gwynedd Council, as the Planning Authorities responsible for planning matters in Anglesey and that part of Gwynedd outside the Snowdonia National Park area, must draft a **Delivery Agreement**.

Anglesey and Gwynedd Joint Local Development Plan Delivery Agreement



Nodiant / Notation

-  Ardal y CDLI ar y Cyd / Joint LDP Area
-  Parc Cenedlaethol Eryri / Snowdonia National Park



Map 1: Joint LDP area

Anglesey and Gwynedd Joint Local Development Plan Delivery Agreement

1.2 What is a Local Development Plan?

- 1.2.1 It will state what the strategy and objectives are for development and land use in the Anglesey and Gwynedd Planning Authorities area and will include policies used to implement them over a period of 15 years, namely, between 2011 and 2026. The Joint LDP will have a significant influence on the development of the whole area and individual communities. It will provide guidance regarding the location of new houses, employment opportunities and leisure and community facilities and where these will be built in the area. The Joint LDP will be used to determine which developments will receive permission in the future by the Councils and where.
- 1.2.2 It is a requirement for the Joint LDP to be 'sound', i.e. showing good judgment and that it can be trusted. The matters that are important to the area must be examined, based on evidence regarding the economy, the society and the environment and fair consideration must be given to practical alternative options. Part 2 of this document provides a brief summary of the population characteristics of the Joint LDP area, along with a brief summary of the local context of this document.
- 1.2.3 The Joint LDP has to ensure that the developments are economically, socially and environmentally sustainable. The **Sustainability Appraisal Report** will show how these have been considered. More details regarding this Report, along with the **Appropriate Assessment**, are available in Part 2 of the DA.
- 1.2.4 Once it has been adopted, the Joint LDP will :
- be clear, transparent, brief and available for inspection by the public;
 - be easy to review in future;
 - provide guidance on the location and type of development;
 - provide a clear and sound basis for decisions on individual planning applications and appeals;
 - avoid duplicating national planning policy;
 - include the development strategy in the Planning Authority area of Anglesey and Gwynedd;
 - show areas that will change or areas that will be protected;
 - include generic development policies;
 - consider statutory and other key plans and strategies, such as the Community Strategy and the Wales Spatial Plan.
- 1.2.5 As it is anticipated that the Joint LDP will be clear and more focused, there is an important role for the **Supplementary Planning Guidance** to support the Joint LDP strategy, its policies and designations by

Anglesey and Gwynedd Joint Local Development Plan Delivery Agreement

providing more technical and detailed guidance. Further information regarding these Guidelines is available in Part 2 of the DA.

1.3 What is a Delivery Agreement (DA)?

1.3.1 A DA must be prepared before being able to proceed to the formal process of preparing the Joint LDP. The final version of the DA is an important and legal part of the process of preparing the Joint LDP and forms an official agreement between the Councils of Anglesey and Gwynedd and Welsh Government. During the Public Examination of the LDP, any deviations from the DA that were not agreed by the Government forms an important test of soundness of the LDP. The contents of the DA and the manner in which the Councils will implement it is therefore crucial to the overall success of the Joint LDP.

1.3.2 This DA was formed in accordance with the relevant planning legislation, regulations and guidelines, including the following:

- Town and Country Planning (Local Development Plans) Regulations 2005;
- Local Development Plans Manual 2006.

The relevant legislation, regulations and guidelines can be seen on the Government's website (www.wales.gov.uk).

1.3.3 The DA replaces the amended DA that was prepared and adopted by Anglesey County Council in January 2009.

1.3.4 There are two main sections to this DA, namely:

Section A – Joint LDP Preparation Timetable Management Plan
that will state:

- the timetable for the preparation of the Joint LDP
- the scope and influence of the Joint LDP
- what is likely to influence the process of preparing the Joint LDP and its content
- what will be the budgetary and staff resources commitment within the Councils for preparing the Joint LDP

Section B – Community Involvement Scheme that will state:

- with whom the Councils will contact during the preparation of the Joint LDP;
- how and when Council officers, elected Members, the public, groups with an interest in the area and developers can contribute to the overall process;
- what happens to the representations.

Anglesey and Gwynedd Joint Local Development Plan Delivery Agreement

More information regarding the Community Involvement Scheme is in Part 6 of the DA.

1.4 Preparing the DA

- 1.4.1 A draft DA will be prepared and it will be the subject of consultation with key stakeholders. Every observation received will be given due consideration and the DA will be amended where it is appropriate to do so. When the Councils decide that they are satisfied with the DA, it will be submitted to the Welsh Government for its agreement. Appendix 1 includes a flow chart, showing the process that must be followed when preparing the DA. The Councils will have to keep an eye on progress against the content of the DA. Should it be necessary to make amendments, then the same process will have to be repeated.

DRAFT

Anglesey and Gwynedd Joint Local Development Plan Delivery Agreement

SECTION A: JOINT LDP PREPARATION MANAGEMENT PLAN

PART 2: Scope of the Joint LDP and how it is influenced

2.1 Scope of the Joint LDP

- 2.1.1 When preparing the Joint LDP, it is important that consideration is given to its form and content. The Joint LDP will concentrate on matters that are particularly important to the area of the Joint LDP and it will not repeat national planning policy unnecessarily. The policies and proposals in the Joint LDP must be based on a thorough understanding of the needs, opportunities and restrictions of the area. A map to show the location of the Joint LDP area is included on page 2 and the following paragraphs provide a brief outline of the area.
- 2.1.2 The area of the Joint LDP includes Anglesey and a part of Gwynedd. The mainland of Gwynedd is linked with Anglesey by means of road and railway bridges. The Joint LDP area is a rural area with a total land surface area of approximately 3,260Km². This makes it one of the largest areas in Wales in terms of surface area that is the subject of a LDP.
- 2.1.3 The Joint LDP area has the largest area in terms of coastline – approximately 511km. The coastline extends around the Isle of Anglesey and then from Llanfawr Sands on the eastern shore of the Menai Straits in the north of Gwynedd onwards to Caernarfon Bay, Bardsey Island and finishing in Tywyn, on Cardigan Bay, in the south. Most of the coastline is located around the Isle of Anglesey, which extends to 50Km, and 88Km of the coastline around the Llŷn peninsula has been designated as a Heritage Coast.
- 2.1.4 The main towns are Bangor, Blaenau Ffestiniog, Holyhead, Caernarfon, Llangefni, Porthmadog and Pwllheli. There are a number of other smaller key towns such as Barmouth, Amlwch, Beaumaris, Nefyn, Menai Bridge and Tywyn. The area adjoins the counties of Conwy and Denbighshire to the east, Powys to the south-east and Ceredigion to the south and the area of the Snowdonia National Park Authority that is to the south also.
- 2.1.5 One of the most prominent features of the Joint LDP area is the high quality of the landscape and the environment. There are two Areas of Outstanding Natural Beauty and a substantial number of local, national and regional nature conservation designations. Also seen here are two of the sites that form World Heritage Sites – the Castle and Town Walls of the towns of Edward 1, namely Caernarfon Castle and Town Walls and Beaumaris Castle.

Anglesey and Gwynedd Joint Local Development Plan Delivery Agreement

- 2.1.6 A study of the North West Wales Labour Market commissioned by the Welsh Government (2010), describes the performance and forecasts for the local economy in Anglesey and in Gwynedd as follows:

Anglesey – deep recession, poor outlook

From 2008-2010 employment is estimated to contract by 8.9%, approaching 1,500 jobs. By far the lion's share of jobs are concentrated in manufacturing, which accounts for around two-thirds of the job numbers lost; a large proportion of these jobs accounted for by the closure of AAM.

Employment continues to fall 2010-2015 (by 3.1%, approaching 500 jobs) reflecting falling jobs in manufacturing, public administration and electricity generation, as the Wylfa station is decommissioned in 2010 impacting specifically on Anglesey North.

From this point onwards, whilst the economy stabilises, in the absence of a replacement for Wylfa, the Anglesey economy appears to be one in long-term decline.

Gwynedd – medium-term vulnerability

The effects of the recession are significant in Gwynedd with the loss of around 1,300 jobs (-3.2%) across a range of sectors. Agriculture in contrast performs reasonably well with sterling depreciation against the Euro making products more competitive within the European market, particularly beef and lamb exports.

The public sector is a significant component of the Gwynedd economy with key institutions based here including Gwynedd Council, Bangor University and Ysbyty Gwynedd. Hence employment levels continue to fall 2010-2015 with the loss of around 600 jobs (-1.5%), mainly in the public sector.

From 2015 the economy gradually begins to stabilise with some modest growth. Growth over this period is negatively impacted by the reduction in employment at Trawsfynydd, which combined with a fall in agricultural employment, will specifically impact Meirionnydd.

- 2.1.6 Appendix 2 includes an outline of strategic issues and trends in the Joint LDP area, along with a map showing landscape and environment features of recognised national or international importance.
- 2.1.7 The process of Joint Planning for Gwynedd Tomorrow during 2010 has identified a series of draft outcomes and sub-outcomes for Gwynedd. These are identified in the table below.

Anglesey and Gwynedd Joint Local Development Plan Delivery Agreement

Draft Strategic Outcomes and Sub-outcomes for Gwynedd

1. A Flourishing Economy

- i. Quality jobs within the county and the population with skills to take advantage of them
- ii. A local economy that takes advantage of high value sectors including a green and sustainable economy
- iii. Key sectors that maintain basic employment that has the capacity to cope with change
- iv. A workforce that is supported to cope with substantial changes in the local economy
- v. The social sector playing a full part in ensuring a strong and varied economy
- vi. A robust infrastructure to promote the success of the economy across Gwynedd

2. A Sustainable Environment

- i. Gwynedd's carbon footprint is low
- ii. The people and communities of Gwynedd are able to cope with climate change

3. Children and Young People of Gwynedd Succeed in Having a Good Future

- i. Parents and families are successful in bringing up and caring for their children
- ii. Children and young people are able to learn, gain crucial skills and to venture
- iii. Children and young people are able to voice their opinions and participate fully in the lives of their communities
- iv. Children and young people are able to live healthily and participate in physical, cultural and social activities.

4. Strong and Safe Communities

- i. Thriving and self-sufficient communities
- ii. The people of Gwynedd have access and reasonable transport to quality services
- iii. More young people and families of working age choosing to remain in the county to live and work
- iv. Gwynedd communities and families are supported to rise from poverty
- v. Gwynedd people feel safe within their communities
- vi. Suitable housing for the needs of Gwynedd residents
- vii. Towns and villages that are suitable for the needs of Gwynedd residents
- viii. The Welsh language and culture flourishing in Gwynedd communities.

5. Better Health and Care in the Community

Anglesey and Gwynedd Joint Local Development Plan Delivery Agreement

- i. Gwynedd residents receive appropriate support to live more independently
- ii. Gwynedd residents live healthy and safe lives
- iii. Gwynedd residents have equal opportunities to good health.

Table 2: Strategic results for Gwynedd

2.1.8 Currently, Anglesey's Community Strategy (2005) identifies the six following key strategic aims:

- Create a thriving future for Anglesey by sustainable economic regeneration,
- Promote healthy and active individuals and communities,
- Protect and promote the island's rich, varied environment of high quality
- Promote a safe island where people can live safely in their homes and communities without fear of crime,
- Support strong and inclusive communities that thrive,
- Support communities that are completely bi-lingual, where the Welsh language, culture and heritage can succeed and thrive.

2.1.9 Anglesey Local Services Board has already started the process of reviewing the Community Strategy and its evidence base.

2.1.10 The work of developing the evidence base for the Joint LDP in order to identify the main matters and objectives to be discussed in the Plan, along with deciding on its basis, means reviewing the information and data available already regarding the above (or any updates of them) in a wide range of documents, including local, regional and national strategies. In addition to this, there will be a need to examine factors involved with the demand for development and development opportunities. Analysis of the information and data about the above will influence the composition of groups/ forums that the Councils will target in order to ascertain their expectations and aspirations for the Joint LDP and achieve as much common understanding as possible on particular issues.

2.2 Likely Format of the Joint LDP

2.2.1 The following will be roughly the format of the Joint LDP:

- Introduction

Anglesey and Gwynedd Joint Local Development Plan Delivery Agreement

- Strategy – vision, main objectives, strategic matters, key/strategic policies and monitoring targets.
- Generic policies
- Principal land-use designations
- Specific policies/proposals for individual areas where there will be change or where protection is required
- Brief justification for policies
- Proposals map.

2.3 Supplementary Planning Guidance

2.3.1 Supplementary Planning Guidance (SPGs) are non-statutory documents and they are prepared in order to reinforce policies or proposals in a LDP. SPGs are important in the planning process and a material consideration when determining planning applications. The Councils have a series of SPGs that reinforce the current development plans and the process of preparing the Joint LDP means that these will have to be reviewed and possibly new ones will have to be prepared. A list of the current SPGs will be published, noting if it is anticipated that they will have to be amended, and identifying new ones when publishing the Pre-deposit Joint LDP.

2.3.2 Relevant stakeholders will be consulted when the current SPGs are amended and when new ones are drafted. They will be published and will be available for public inspection. Whenever possible, it is intended to hold the consultation concurrently with the consultation on the Joint LDP (especially where the SPG can assist readers to better understand a policy or proposal in the Joint LDP). This will not be possible every time and in such circumstances there will be a period of separate public consultation on those SPGs. The Councils will adopt the SPGs that support the Joint LDP after the Inspector's report regarding the robustness of the Joint LDP has been received.

2.4 Sustainability Assessment (including a Strategic Environmental Assessment) and a Appropriate Assessment

2.4.1 The Planning and Compulsory Purchase Act 2004 states that the Joint LDP must be the subject of a Sustainability Assessment (SA) and to report on the findings of this work throughout the process of preparing the Plan. Also, the Joint LDP is recognised by European law as the type of plan that must be the subject of a Strategic Environmental Assessment (SEA). SEA Regulations have their own specific requirements. Despite this, it is possible to evaluate the Joint LDP in accordance with the requirements of these Regulations jointly with the SA. This is proposed and will be in accordance with the Government's guidelines on this matter.

Anglesey and Gwynedd Joint Local Development Plan Delivery Agreement

- 2.4.2 The Joint LDP will deal with linguistic and cultural matters, and equality and health matters. The SA process will assess the effect of the Joint LDP on these matters. This aspect of the SA process will be informed by undertaking an Equalities Impact Assessment, Health Impact Assessment, Welsh Language Impact Assessment at key stages during the Joint LDP preparation process. The joint SA and SEA will provide the relevant information for forming appropriate policies in the Joint LDP throughout its preparation process.
- 2.4.3 In addition to this, another European law states that any plan or programme that is likely to have a significant effect on a Natura 2000 site (namely a Special Area of Conservation –SAC, Special Protection Area –SPA, or a RAMSAR site) must be the subject of Habitats Regulations. An Appropriate Assessment may have to be undertaken of the Joint LDP to conform to these Regulations. The aim of these Regulations is to ensure the accuracy of the sites in question. The findings of this work will also be included regularly in the Joint SA and SEA.
- 2.4.4 More details regarding the key steps and the timetable for their completion are available in Appendix 3. When preparing the Joint AC and SEA, the Sustainability Assessment Task Groups will be used that will include professional officers with an interest and expertise in the relevant fields. At appropriate times, representatives from specialist organisations will join this Group. An external consultant with expertise in the field has been appointed to check the work throughout the process as well as preparing relevant documents and consulting with environmental groups. The Groups will assist with the work of assessing the effects of relevant parts of the Joint LDP on the society, the economy and the environment.

2.5 Links with key national, regional and adjoining local policies and strategies

It's important to consider how national and regional policies and strategies, along with policies and strategies of adjoining authorities, can influence the Joint LDP area, e.g. what role the Spatial Plan anticipates for the area; proposals in the Wales Transport Strategy; initiatives in the Regional Transport Plan. The key policies and strategies have been recorded and they will be reviewed in order to develop a thorough understanding of their requirements and the resulting opportunities or restrictions.

2.6 Other plans and strategies for Anglesey and Gwynedd

- 2.6.1 The Councils are committed to achieve the visions of the Community Strategies for Anglesey and Gwynedd through the aims and objectives of a number of plans and strategies for which the individual Councils are responsible for preparing or those that are prepared by

Anglesey and Gwynedd Joint Local Development Plan Delivery Agreement

collaborating with others. Corporate synergy is crucial to achieve this and as the Joint LDP will aim to achieve the element of land use of all the relevant plans and strategies, it has a key role as one of the strategic corporate documents of the two Councils. Dealing with matters in a coherent way will also ensure that the Councils will not duplicate work that has already been completed.

2.6.2 The evidence base for the Joint LDP will also draw from the wide range of current corporate plans and strategies that include the following:

- Gwynedd's Community Strategy (2008-12)
- Gwynedd's Local Housing Strategy(2009-12)
- Gwynedd's Regeneration Strategy (2007-13)
- Children and Young People Plan for Anglesey (2008-11)
- Health, Social Care and Well-being Strategy for Anglesey (2008-11)
- Llŷn AONB Management Plan (2010-15)
- Anglesey AONB Management Plan Review (2009-15)
- Anglesey Life (2007)
- Anglesey Energy Island Programme (2010)

The evidence base is currently being developed. A list of documents will be available to be inspected on the Councils' websites, in public libraries and at the Councils' main offices in Bangor, Caernarfon, Dolgellau, Llangefni and Pwllheli.

2.6.3 The Community Strategies for Anglesey and Gwynedd and several other key strategies/plans are being reviewed by the Councils and their partners during 2010-2012. The early stages of these reviews will be concurrent with the early stages of preparing the Joint LDP. This will provide an opportunity for joint-planning and both Councils have measures in place to facilitate this.

2.6.4 In order to ensure that the Joint LDP achieves this synergy and to ensure it reflects the corporate and strategic objectives of the Council, a Joint LDP Panel was established that includes Councillors from both Councils. The Panel will convene on a regular basis and will provide guidance regarding policy and proposals, along with management of the process. The Joint Planning Policy Unit (see 3.1.3 below), will support and report to the Panel. An invitation will be given to officers from other Units to attend meetings as required to give evidence and provide assistance. This Panel will have no authority to make decisions. It will make recommendations to the Joint-Planning Policy Committee and/or to the Anglesey Executive Committee/ Gwynedd Council Board, which have the authority to make decisions on behalf of the Councils, unless regulations note otherwise. The Table in Appendix 4 broadly shows what will be the role of the various committees.

Anglesey and Gwynedd Joint Local Development Plan Delivery Agreement

2.7 Tests of Soundness

- 2.7.1 The Joint LDP must pass the 'soundness' test. Preparing the Joint LDP in accordance with the published DA is one of the soundness tests. Crucially, a sound plan will be a plan that: has been properly prepared in accordance with statutory requirements; based on sound and credible evidence and has been developed with continuous contribution by the community; shows policy integration and contributes towards ensuring sustainable development.
- 2.7.2 The Inspector will undertake a Public Examination that will decide whether or not the Joint LDP is robust. The Planning Inspectorate has published guidelines on the matter, namely 'A Guide to the Examination of Local Development Plans' and it can be seen on the Planning Inspectorate website (www.pins.gov.uk). The soundness tests are listed, for information, in Appendix 5 of this DA.

DRAFT

Anglesey and Gwynedd Joint Local Development Plan Delivery Agreement

PART 3: The Resources and the Timetable

The timetable for preparing the various steps in the process of preparing the Joint LDP, how the process is managed and information regarding the resources required for its preparation is one key element of the Delivery Agreement (DA).

3.1 The resources - staff

3.1.1 It is a requirement for the Councils to commit staff and funding resources for undertaking the various steps in the process of preparing the Joint LDP.

3.1.2 The Project Board, that includes the following officers, will be responsible for the overall completion of the Joint LDP.

Anglesey County Council:	Gwynedd Council
<ul style="list-style-type: none"> • Corporate Director and Environmental and Technical Services • Head of Planning Service and Public Protection 	<ul style="list-style-type: none"> • The Corporate Director will provide strategic guidance in the fields of health, well-being and social care, provider, leisure, transportation, housing and regulatory fields (planning and public protection). • Head of Regulatory Department (Planning, Transportation and Street Care, Public Protection)

Table 3 Joint LDP Project Board

3.1.3 A Joint Planning Policy Unit was established in order to lead on the day-to-day work of preparing the Joint LDP and any consultation documents. The following table shows the structure of the Unit and an estimate of officer time given to preparing the Joint LDP.

Anglesey and Gwynedd Joint Local Development Plan Delivery Agreement

<u>Officer title</u>	<u>% of officer time allocated for the JOINT LDP</u>
Environmental Services Manager, Gwynedd Council	20
Planning Policy Manager x 1	70
Planning Policy Team Leaders x 2	70
Planning Policy Senior Officers x 4	80
Planning Policy Officers x 2	90
Planning Policy Assistant x 1	90
Planning Policy Systems Assistant x 1	90
Planning Support Assistant x 1	90

Table 4 Staff resources

- 3.1.4 Officers from other Services of the Councils will also be a part of various aspects of the preparation process of the Joint LDP, as required. This support will include assistance when forming policies, sustainability assessment, habitat regulations assessments and expert advice to respond to the observations received.
- 3.1.5 Consideration will be given to the possibility of employing additional staff to assist during specific times, e.g. during and immediately after the formal consultation periods. A computerised package has been purchased, made specifically to facilitate the process of placing key document on the internet to enable stakeholders to input their observations on-line and to facilitate the process of analysing the comments received.
- 3.1.6 When required, external consultants will be commissioned to undertake technical/specialist surveys to contribute to the Joint Planning Policy Unit's capacity to undertake surveys, or to provide advice on specific technical/specialist matters. This will be particularly true during the first few years of the programme. It is anticipated that a sum of up to approximately £400,000 will be needed for this work. The following table identifies some of the possible matters that need this type of attention.

Anglesey and Gwynedd Joint Local Development Plan Delivery Agreement

Subject
Population projections, national households and housing — analysis and understanding
Needs of the housing market – analysis and understanding of the drivers
Viability of housing developments – methodology for their assessment
Future needs of the local economy and an assessment of quality and supply of employment lands
Retail needs and capacity, including the role of centres and town centres
Needs and capacity of the tourist sector
Assessment of open recreational and green spaces
Needs of Gypsies and Travellers and responses to them
An assessment of the character of the landscape
A renewable energy assessment
An urban capacity study – true potential to supply the demand
A Level 1 (and possibly Level 2) Strategic Flood Risk Assessment
Guidance regarding the SEA and Appropriate Assessment process

Table 5 Possible matters when external technical expertise will have to be purchased

Anglesey and Gwynedd Joint Local Development Plan Delivery Agreement

3.2 The resources – funding

3.2.1 Based on previous experience of preparing development plans and the experience of other authorities the Councils have allocated a sum of money to ensure that the Joint LDP moves forward through the process in accordance with the Delivery Agreement, at least until the Public Examination. Bids will be made for additional funding if required by means of the usual internal bidding processes of the Councils.

3.3 The timetable

3.3.1 The Planning and Compulsory Purchase Act 2004 and the Town and Country Regulations (Local Development Plans) (Wales) 2005 note the steps that should be taken for preparing a Joint LDP. Table 1 below states the key steps in the process of preparing the Joint LDP and it notes the proposed rough timetable for the completion of these steps. The timetable is based on the resources referred to above and it acknowledges the Council elections in May 2012. It is aimed to ensure that key discussions with Councillors, Strategic Officers and the Stakeholders Group will have taken place and important discussions regarding the vision and general objectives for the area, the preferred strategy, the implications for developments as a result of implementing this strategy, including identifying any major sites and a series of smaller sites, will have been taken by this time. A more detailed timetable can be seen in Appendix 3.

Step in the preparation process		Timetable
	Definitive Timetable	
1.	Preparing and publishing the final Delivery Agreement (<i>Regulation 5-10</i>)	January - November 2011
2.	Review and develop the evidence base	July 2010 - July 2012
3.	Pre-deposit participation – preparing the pre-deposit documents that will outline the main aims and preferred strategy (<i>Regulation 14</i>). This will not be the full draft of the Joint LDP	January 2011 – July 2012
4.	Pre-deposit Consultation – a period of 6 weeks (<i>Regulation 15</i>) Formal consultation on the pre-deposit documents and the Sustainability Appraisal Report	September 2012 - October 2012
5.	Participation – developing the evidence base further and preparing the Pre-Deposit Joint LDP (full draft plan) based on the evidence base that includes the response received to the pre-deposit documents.	November 2012 - September 2013
6.	Placing the Joint LDP and associated documents on deposit – consultation period of 6 weeks (<i>Regulation 17</i>)	October 2013 - November 2013

Anglesey and Gwynedd Joint Local Development Plan Delivery Agreement

Indicative Timetable¹		
7.	Considering observations on the Deposit Joint LDP (<i>Regulation 18 & 19</i>)	December 2013 - June 2014
8.	Publishing observations regarding alternative sites and consultations upon them – a period of 6 weeks (<i>Regulations 20 & 21</i>)	January 2014 - February 2014
9.	Submitting the Joint LDP to the Government for Examination (<i>Regulation 22</i>)	November 2014
10.	Independent Public Examination (<i>Regulation 23</i>)	April 2015
11.	Publishing the Inspector's Report (<i>Regulation 24</i>)	January 2016
12.	Adopting the Joint LDP (<i>Regulation 25</i>)	April 2016
13.	Monitoring and Reviewing	Annual report

Table 6: Timetable for preparing the Joint LDP

3.3.2 In accordance with the Joint LDP Regulations, the final timetable for taking steps 7-12 will be decided within 3 months from the end of the consultation period on the deposited Joint LDP. During this time, the Council will have agreed the timetable of the Public Examination with the Planning Inspectorate.

¹ The timetable for steps 7 – 12 will depend on external factors and influences that aren't known to the Council at this point

Anglesey and Gwynedd Joint Local Development Plan Delivery Agreement

PART 4: Risk management

4.1 Making decisions

4.1.1 Having considered all the relevant evidence, including opposing views expressed by different stakeholders, it will be the responsibility of the Anglesey Council Board of Commissioners/ Executive Committee and Gwynedd Council's Board to make decisions about the content of documents early in the process of preparing the Joint LDP, i.e. the Delivery Agreement and the Pre-deposit Documents. The Joint Planning Committee will then make similarly informed decisions about the content of documents at other stages in the Plan preparation process, except where the authority of the full Councils is a statutory requirement. The table in Appendix 4 identifies the role of the various committees.

4.2 Factors that could influence the process

4.2.1 The Councils are of the opinion that the timetable that has been identified is realistic and can be achieved. Every effort will be made to keep to that timetable. However, some matters have been identified where there is a risk that they could lead to a departure from the timetable noted in this DA. More details regarding the risks and the steps that are intended to be taken to meet/mitigate those risks are in Appendix 6.

Anglesey and Gwynedd Joint Local Development Plan Delivery Agreement

PART 5: Monitoring and Reviewing

5.1 Monitoring and Reviewing against the DA

5.1.1 The Joint LDP Project Board will monitor and review the progress made against the DA throughout the work of preparing the Joint LDP in order to ensure that the aims of the DA are being achieved in accordance with the proposed timetable. The following are examples where there could be a need to review and amend the DA:

- If the process is delayed substantially in terms of the timetable (3 months)
- If any substantial changes are required to the Community Involvement Scheme.
- If there are any substantial changes in the resources available to the Councils.
- If any new legislation, regulations or guidance from Europe, the UK or the Government make it a requirement that new procedures or tasks have to be implemented.
- If there are any other changes to the environment that has a material effect on the presentation of the plan in accordance with the DA.

5.1.2 The Joint LDP Project Board will report on any significant deviation (3 months or more) from the timetable to each Council's Environment Scrutiny Committee, and then to the Anglesey County Council Executive Committee/ Gwynedd Council Board/Joint Planning Policy Committee, justifying the delay and recommending the appropriate steps.

5.1.3 If the Councils identify that there is a need to review the DA, there must be a re-discussion with the specific consultation bodies and agreement must be sought from the Welsh Government in accordance with the LDP Regulations.

5.2 Annual Monitoring Reports (AMR)

5.2.1 After accepting the plan, the Councils will produce an Annual Monitoring Report (AMR) on the Joint LDP and the SA/SEA. In accordance with the guidance provided in the Local Development Plans Wales Regulations (2005), the report will include the period between 1 April – 31 March of each year and will be submitted to the Welsh Government by 31 October the same year. The AMR will be available for public inspection and for them to submit their observations upon it. The AMR will also assess how effective the policies and proposals of the plan have been implemented. If the policy has not been implemented, the Councils will explain the reasons for this and

Anglesey and Gwynedd Joint Local Development Plan Delivery Agreement

they will note the steps they intend to take to ensure its implementation and any intention to modify the Joint LDP in order to replace or adapt the policy.

- 5.2.2 In accordance with the guidance of the Government, the Councils will attempt to integrate the method of monitoring the plan with their other strategies and plans, in particular monitoring/reviewing the Community Plans. Where the objectives of the Joint LDP are in accordance with those in other strategies, monitoring will highlight common indicators and targets.

5.3 Reviewing the Joint LDP

- 5.3.1 After adopting the plan, the Councils intend to undertake a full review of the Joint LDP at least once every four years, although the frequency and timing will depend on the findings in the AMR/local circumstances. The review will include reconsideration of the 'robustness' of the plan, along with a re-assessment of the sustainability assessment and trends that become apparent and it will identify whether or not the plan needs to be modified. Should there be a need to modify the plan, the process undertaken to achieve this will be similar to the process of preparing it.

Anglesey and Gwynedd Joint Local Development Plan Delivery Agreement

SECTION B – COMMUNITY INVOLVEMENT SCHEME

PART 6 – Scope of the Community Involvement Scheme (CIS)

6.1 Introduction

6.1.1 The Regulations of the LDP require that Councils work in partnership with stakeholders and communities early on in the process of preparing the Joint LDP and throughout the process thereafter. The main principles which are the basis for engaging with communities in the Joint LDP process are defined in 'LDP Wales' (2005) as follows:

- To create circumstances that allow early participation and feedback at a time when people can see that an opportunity exists to influence the Plan;
- To encourage the commitment of all stakeholders to an open and honest discussion on other practical development options when seeking consensus; and
- To acknowledge the need to adopt methods of involving the community, including businesses, whilst also seeking the opinion of those people that would not usually participate.

6.2 Aims and Principles of the CIS

6.2.1 The purpose of public participation is to ensure that a wide range of communities and individuals who have an interest and specific consultation bodies participate in the decision making process regarding the contents of the Joint LDP. This is done by encouraging discussion and sharing relevant information. The Councils are of the opinion that involving communities in the Joint LDP process is crucial to ensure local ownership and the legitimacy of policies that will determine the development of the area in future. This method should reduce the time taken to adopt the plan by reducing the number of objections to policies in the Joint LDP and therefore reduce the time spent on the later stages of the process of preparing the plan. The process of reaching consensus is assisted by establishing and sharing a common base of information for key matters from the very beginning of the process.

6.2.2 The CIS will provide an understanding of the following:

- The features of the communities within the Joint LDP area – a taste of the area's population profile is found in Part 2 of the CIS;
- The periods when the communities can participate in the process and to what extent;
- The range of possible methods and techniques used to ensure that communities can participate in the process.

Anglesey and Gwynedd Joint Local Development Plan Delivery Agreement

6.2.3 The principles found in the public consultation and communication frameworks of the Councils, e.g. 'Gwynedd Council's Public Communication Strategy' (2009 – 2012), 'Gwynedd Participation Strategy' created by the Children and Young People Strategic Partnership, Anglesey County Council Community Consultation Framework and the Gwynedd and Anglesey Cynnwys Project set out the context for facilitating the involvement of the communities in the task of preparing the Joint LDP. The next section refers to the principles and relates them to the process of preparing the Joint LDP.

Objectives for Involvement

Access to information	So that communities and stakeholders can make the correct choices and understand the context of the Joint LDP, appropriate and timely information will be provided, in an easily accessible and understandable form.
Early Participation	Ensure that communities and stakeholders have every opportunity to get involved and participate from the very first stage of the process of preparing the Joint LDP. Contributions will be encouraged during the times of preparing the Joint LDP when ideas can best influence the process.
Relevant Information	The available information will encourage involvement and participation throughout the process and it will be appropriate and relevant to each specific group, based on a clear understanding and the needs and experience of the communities and stakeholders.
Regular Feedback	Provide regular feedback so the communities and stakeholders can see how ideas develop or be informed of why ideas cannot be developed further.
Transparency	Be clear from the very beginning regarding who will take part and when, including their role during each stage.
Sharing Information	Ensure that contributions from communities are then fed into work undertaken on plans and other key strategies.

Table 7: The Principles of Public Participation

Anglesey and Gwynedd Joint Local Development Plan Delivery Agreement

6.3 From whom will we expect input?

6.3.1 We will be concentrating on getting input from the following:

The Public, namely individual members who live, work or stay in the Joint LDP area. One of the aims of the new Joint LDP system is to engage with members of the community that would not usually take part in the planning process. These hard to reach groups can include, for instance, young people, older people, gypsies and travellers, disabled individuals and individuals who are suffering due to economic and social deprivation. Analysis of the profile and characteristics of the local population indicate that these groups are those that need to be targeted at key stages in the process of preparing the Joint LDP. Current partnerships will have a role to play to reach some of these e.g. Children and Young People Partnership. Some of the general consultation bodies referred to below will also have a role to play.

Businesses, landowners, developers and agents: Some general consultation bodies (see below) will have a role to play to reach some in the business community, landowners and developers. Landowners and prospective developers and agents will have an opportunity to submit ideas for land that could be available to be developed early on in the process by registering information on the **Register of Possible Sites** (please see below).

General Consultation Bodies: Namely, groups and organisations which have a specific interest in the area e.g. bodies that represent the interests of different race or ethnic groups; bodies that represent the interests of those running their businesses in Joint LDP area; bodies that represent the interests of the Welsh culture in the area. A list of these can be found in Appendix 7.

Specific Consultation Bodies, namely those that the Council has to consult with e.g. the Government, Countryside Council for Wales, Community and Town/City Councils and nearby authorities. A list of these can be found in Appendix 8.

6.4 When will the communities and key stakeholders participate in the process?

6.4.1 The timetable for preparing the Joint LDP can be found in Appendix 3. Information can also be found on the opportunities that will be available to the communities and key stakeholders to take part in the process. There are two designated stages, namely the participation stage and then the consultation stage.

Anglesey and Gwynedd Joint Local Development Plan Delivery Agreement

The Public Participation Stage

6.4.2 This stage mainly happens early on in the process of preparing the Joint LDP (up to July 2012). Although any discussions will be based on a clear structure, this stage will be less formal and will aim to seek to reach consensus on important and strategic matters. During this period, the aim is to reach an agreement on:

- The main special and sustainable matters facing the Joint LDP area;
- The vision of the community on the spatial future of the area;
- The land use planning objectives for realising this vision;
- The preferred strategy (after considering several options) for the scale and spatial distribution of new developments in future.

Public Consultation Stage and Formal Involvement

6.4.3 When the preferred strategy is chosen following community and key stakeholder participation, a more formal stage will begin which will involve periods of official public consultation. The Regulations state how much time should be allocated for this. Anyone will have an opportunity to submit written observations on the documents which will be available to view, and a formal record will be made of those observations. After consideration has been given to the observations, the work of drawing up a draft version of the Deposit Joint LDP will be undertaken, which can involve contacting organisations, establishments or partners formally to request information or specialist leadership. The Deposit Joint LDP will be available to view for an official period of 6 weeks, when it will be possible to submit observations on its contents to the Council. Should observations be received which offer sites that have not been included in the Deposit Joint LDP, then there will be a further period of public consultation. Objectors to the Deposit Joint LDP can submit their case to an Independent Inspector.

Sustainability Assessment/Strategic Environmental Assessment

6.4.4 Every stage of the Joint LDP will have to be the subject of a Sustainability Assessment. Sustainability Assessments are created through a technical process and interested parties are invited to submit observations. Work that will have to be completed early on during this process will be to identify the evidence base regarding the social, economic and environmental characteristics of the area. This evidence base and other information will form a part of the Scoping Report. This report will be the subject of a formal public consultation.

Anglesey and Gwynedd Joint Local Development Plan Delivery Agreement

6.5 Engagement, Consultation and Participation methods

6.5.1 A number of methods are used to facilitate the involvement of stakeholders and communities throughout the process of preparing the Joint LDP. It's important that the techniques used are appropriate for the purpose with regards to different stages of preparing the Joint LDP and for the purposes of different groups. Here is a list of the types of engagement and consultation methods that are considered for use:

- Press Statements
- Articles in 'Newyddion Gwynedd News' and 'Newyddion Mon'
- Council Websites – a specific part of the websites will be designated for information on the Joint LDP (www.gwynedd.gov.uk or www.anglesey.gov.uk)
- "Cyswllt" news-sheet, intranet, staff e-bulletins – over 10,000 individuals work for Anglesey County Council and Gwynedd Council, and a very high percentage of these workers, their families and friends, also live in the Joint LDP area.
- Reception desks in the main Council Offices in Bangor, Caernarfon, Dolgellau, Llangefni and Pwllheli, payment offices, and local libraries.
- Use of events/meetings that already exist e.g. youth clubs.
- Direct contact (through letter or e-mail)
- Adverts in local newspapers
- Community Papers
- Text messages and/or use of social networking sites (e.g. Facebook)
- Holding workshops/open meetings

6.5.2 In addition to the above, the Councils are committed to using networks and partnerships that already exist, including:

- Gwynedd Together Partnership
- Gwynedd and Anglesey Local Service Boards
- Gwynedd Economic Partnership
- Gwynedd Environmental Partnership
- Gwynedd Housing Partnership
- Gwynedd Children and Young People Partnership
- Gwynedd Health, Care and Well-being Partnership
- Anglesey Planning Forum that includes representatives from focus groups involved with land use planning matters.
- Anglesey Forum, that includes representatives from the Economic Regeneration Partnership, Area Regeneration Partnership, Crime and Disorder Partnership, Children and Young People Framework Partnership, Health, Care and Well-being Partnership Board.

Anglesey and Gwynedd Joint Local Development Plan Delivery Agreement

- Anglesey Environment Forum.

Key Stakeholders Group of the Joint LDP

6.5.3 A Key Stakeholders Group of the Joint LDP will be established to assist with preparing the plan which will be a forum for constructive discussions. The KSG will include a cross-section of representatives which have a significant interest in the future development of the Joint LDP area. The possible members of the KSG can be found in Appendix 9 – these can change as the work of preparing the Joint LDP is ongoing. The members of the KSG will play an important role in the key stages of the preparatory work for the plan. They will help to note strategies and other options and assess them while the plan moves forward.

Citizen Panels for Gwynedd and Anglesey

6.5.4 Gwynedd Council has established a Citizen Panel and Anglesey Council is considering whether or not it would be appropriate to establish Citizen Panel. The Panels would be a means to investigate the opinion of a cross-section of the population of Anglesey and Gwynedd. The Panels could form another useful 'sounding board'. The Panels would be consulted at the important stages of preparing the Joint LDP, especially in the early stages of noting matters and considering other options.

6.6 Links with Wales Spatial Plan and Joint Working

6.6.1 When preparing the Joint LDP, it's important that the Councils are completely aware of proposals and developments in neighbouring authorities and beyond that could affect the Joint LDP area. A range of forums already exist, such as the Wales Spatial Plan Working Group, North Wales Planning Policy Officers Group, the Regional Transport Plan and the Regional Waste Plan. A close working relationship will be nurtured with Snowdonia National Park Authority and Conwy, Ceredigion, Denbighshire and Powys County Councils through regular programmes of meetings.

6.7 Councillor Involvement

6.7.1 Every Councillor will receive information at important stages throughout the process of preparing the Joint LDP, for example: discussions about the vision; the Joint LDP's strategic aims and objectives; consideration of the preferred strategy, - which are important first steps; and latter on when discussions will take place regarding specific issues relating to sites and settlements. The Councillors will also have an important role because of their local knowledge as local 'enablers', to raise awareness within communities and therefore facilitate the process of

Anglesey and Gwynedd Joint Local Development Plan Delivery Agreement

preparing the Joint LDP. The Councillors' input will be guided by the Members' Code of Conduct and Standards Committee in order to prevent any influences on the Councillors' role in making recommendations and decisions in the relevant committees.

6.7.2 At key stages throughout the preparation stages of the Joint LDP and Sustainability Assessment, reports will be submitted to the Environment Scrutiny Committee (Anglesey), Gwynedd Council Environment Scrutiny Committee, Joint Gwynedd and Anglesey LDP Panel, Joint Planning Policy Committee (Gwynedd and Anglesey), Anglesey County Council Executive Committee, Gwynedd Council Board, and to the full Councils (when a corporate decision is needed).

6.8 Involvement of Council Officers

6.8.1 Consulting with relevant officers within the Councils will be crucial throughout the preparatory stages of the Joint LDP and Sustainability Assessment. Gwynedd Council has, for instance, a Strategic Direction Service which includes officers who are involved in many different fields. The meetings of this Service in addition to the meetings of other current groups on officer level are used to submit and discuss matters relating to the Joint LDP e.g. Senior Managers Forum and other groups that deal with topical matters e.g. housing, waste and matters related to specific areas. Relevant officers are also invited to submit evidence to the Joint LDP Panel (see 2.5.2 above) and to discuss relevant matters with the Panel members.

6.9 Document Availability and Feedback

6.9.1 Consultation documents will be widely available in order to encourage and ensure effective engagement throughout the Joint LDP process. They will be provided to the consultees and published electronically on the Council's website (www.gwynedd.gov.uk or www.anglesey.gov.uk) and through e-mail. Paper copies will also be available in the following places.

- The Council's main offices in Bangor, Caernarfon, Llangefni, Pwllheli and Dolgellau.
- Public Libraries in Anglesey and Gwynedd

6.9.2 Paper copies will be available for a price that covers the administrative costs of the Councils. The reports and minutes of the Key Stakeholders Group, Joint LDP Panel, Joint Planning Policy Committee, Anglesey Council Executive Committee and Gwynedd Council Board, in addition to any public meetings organised during the process will be published electronically on the Council's website (www.gwynedd.gov.uk or www.anglesey.gov.uk).

Anglesey and Gwynedd Joint Local Development Plan Delivery Agreement

6.9.3 Full consideration is given to the needs of disabled individuals in order to ensure that they have access to information. Whenever practical, large print copies and/or audio copies of documents will be available on request.

6.10 The use of the Welsh language and other languages

6.9.4 6.10.1 Preparing the Joint LDP, the liaising and consulting will conform to the Welsh Language Plan of both Councils. Wherever possible, public documents will be published bilingually even though the need to produce them bilingually will be reviewed in the case of documents which are technical in nature which are of limited interest. Whenever practical, copies of documents will be available in other languages on request.

6.11 What will be expected of the communities and key stakeholders?

6.11.1 So as to ensure that everyone plays a full part throughout the Joint LDP process it is important for them to consider the following:

- That they respond to correspondence within an appropriate time limit, while following any specific procedure
- Understand that the Joint LDP does not deal with everything and raise matters that the Joint LDP can legally deal with
- Commit to the process by being present, contributing and assisting in creating a consensus
- Identify any gaps in the information provided/ in the evidence base
- Identify and submit appropriate details about timely proposed sites
- Follow guidelines and relevant procedures
- Share/provide information by demand
- Understand that the Report of the Inspector is binding and that it is not possible to appeal against the recommendations of the Inspector
- Provide contact details so that the Council can share information and share responses

6.12 The Candidate Sites Register

6.12.1 A Candidate Sites Register will be created early in the process of preparing the Joint LDP. Suggestions are invited for possible sites to be developed (e.g. for housing, businesses, shops etc.) by means of adverts in the local press and on the website of each Council (www.gwynedd.gov.uk or www.anglesey.gov.uk). Anyone can suggest a site, but the suggestions would have to be supported by information that shows why the site is suitable. Guidance will be given regarding the type of information needed on the websites of both Councils.

Anglesey and Gwynedd Joint Local Development Plan Delivery Agreement

6.12.2 The Register will be available for public viewing (on the Council websites). Following consideration of the sites, an assessment will be published. This Register will fulfil an important function when identifying sites to be allocated for development and when discussing other options. The closing date for submitting ideas will be published (in the local press and on the websites of both Councils). Individuals who submitted candidate sites as part of the former Anglesey LDP (now withdrawn) process will be contacted to inform them about this new call for sites process.

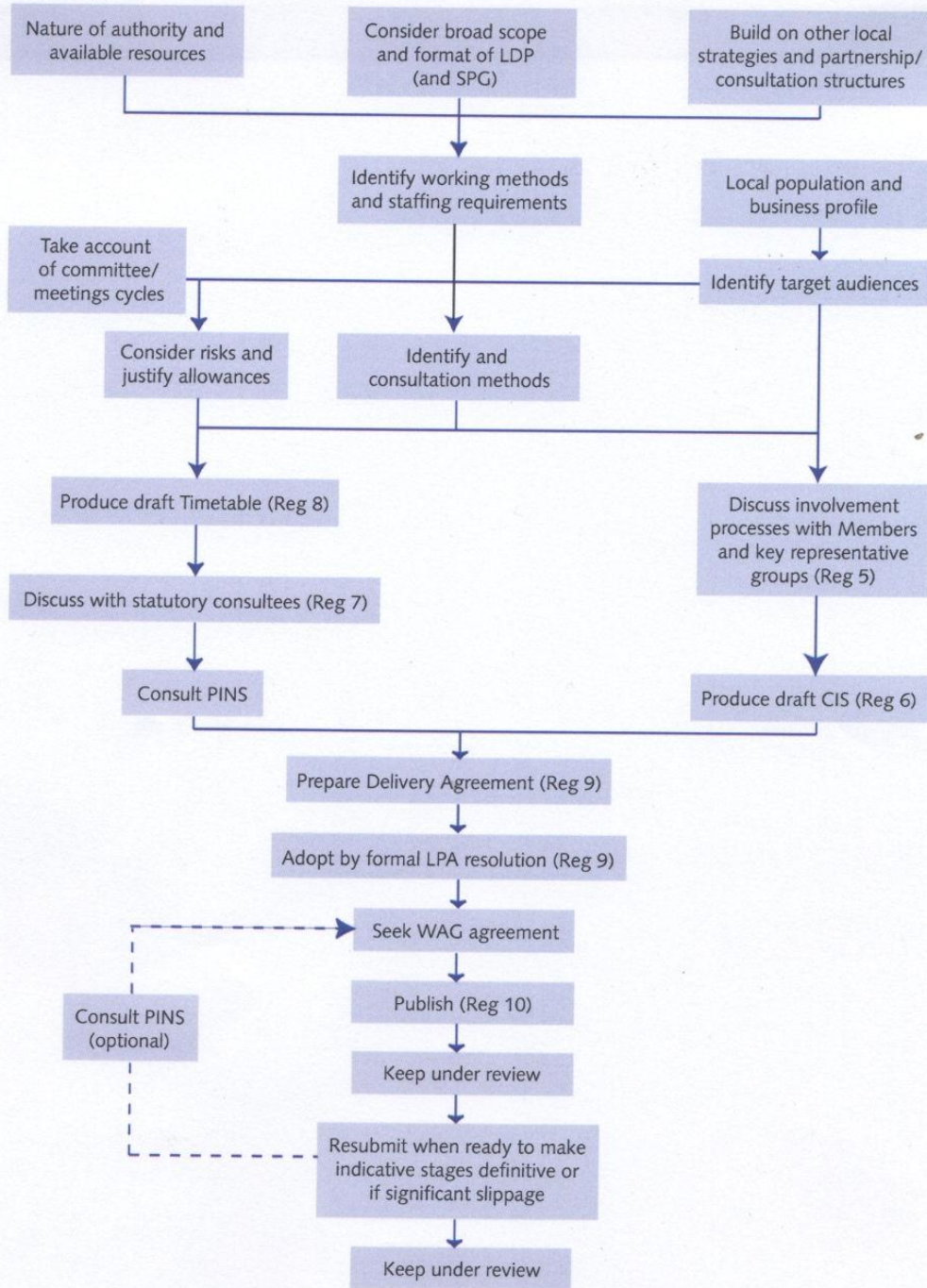
DRAFT

Appendix 1 – Anglesey and Gwynedd Joint Local Development Plan Delivery Agreement

Flow chart of the Delivery Agreement preparation process

Local Development Plan Manual June 2006

Figure 4.2: The Delivery Agreement



Appendix 2 – Anglesey and Gwynedd Joint Local Development Plan Delivery Agreement

Key Strategic Facts and Figures

Social

- slight increase (1.5%) in population between 2001 and 2009;
- higher % of the population is aged 50+ compared to the Welsh average, and the % is particularly high in some coastal and more rural wards;
- more young people moving out of the area than moving into the area;
- the national 2008 based population projections suggest that by 2023 the population will increase by 7,700;
- without a positive net migration during the projection period, the population would decline;
- around 99% of the population is white;
- long term illness and disability levels are below the Welsh average overall, but long term illness and disability is an issue in some wards within the area and amongst the older generation;
- cancers, coronary heart diseases and respiratory diseases are the most common causes of death;
- In 2005/06, 37% of the Gwynedd population reported meeting physical activity guidelines during the previous week, 7% higher than the rate for Wales and 2% higher than the figure recorded for Gwynedd in 2003/05
- the crime rate has gradually fallen since 2006 – 07;
- the most deprived wards are Peblig, Marchog, Morawelon, Tudur and Porthyfelin;
- 44% of all wards in Gwynedd and 55% of all wards in Anglesey were more deprived than the Wales average;
- 66% of the population 3+ years old speak Welsh;
- on average 395 new housing units have been built annually since 2001 - 02;
- the national 2008 based household projections suggest that between 2008 and 2033 the number of households is projected to increase by 16.5%;
- undeveloped sites that distort the housing land availability figures in sub-areas within the Joint LDP area;
- house prices rose significantly prior to the recession;
- despite the recession affordability ratio stood at 7.8 and 7.6 in Anglesey and Gwynedd respectively in December 2010, and the ratio is particularly high in some coastal and more rural wards.
- In North Wales there is a good record of accident reduction and the Region is on track to exceed Government Road Safety targets for the year 2010 compared to the 1994-98 average.

Appendix 2 – Anglesey and Gwynedd Joint Local Development Plan Delivery Agreement

Economic

- six wards are amongst the 10% most deprived wards in Wales;
- in 2008, Anglesey had the lowest GVA in Wales at £11,333 per head, compared to the Welsh average of £15, 222, whilst Gwynedd stood at £13, 664, which is the 8th lowest in Wales;
- in 2007 Anglesey's GDP stood at 18,800 euro per inhabitant, the lowest but one in Wales, whilst Gwynedd's GDP stood at 22,000;
- median annual earnings (£23,700) are below the national average (£24,350);
- around 14% of households have an annual household income of less than £10,000;
- in June 2010, overall, the economic activity rate (73.6%) was above the Wales average (72.8%), but the economic activity rate varies within Anglesey and Gwynedd;
- the number of people who are of working age who are economically inactive (21.75%) is slightly higher than the Wales average (20.6%);
- in January 2011, 4% of working age people were claiming Job Seekers' Allowance, which is equal to the Wales average;
- in January 2011, nearly 31% of people aged 17 – 24 were claiming Job Seekers' Allowance;
- the unemployment rate varies within Anglesey and Gwynedd;
- there is an over-dependence on public administration, education and health sectors as well as distribution, hotels and restaurants;
- employment land/ premises is mainly located on traditional industrial estates or business parks, which are mainly located within or near to the main towns;
- around 23% of households have no car and rely on public transport;
- there are capacity issues along sections of the local road network;
- there is poor accessibility by public transport to major employment sites from the deeper rural areas;
- Bangor is the largest retail centre in the area (ranked 375 in the UK), and a proportion of expenditure continues to be leaked to other centres along the North Wales coast and beyond;
- there are instances where the localised water supply network may not be sufficient to meet additional demand;
- there are instances where improvements works will be required to existing waste water treatment works to meet additional demand.

Appendix 2 – Anglesey and Gwynedd Joint Local Development Plan Delivery Agreement

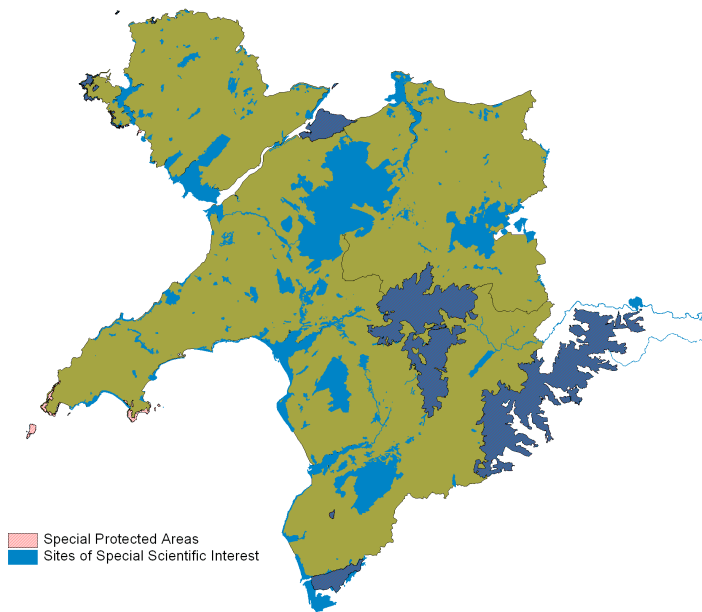
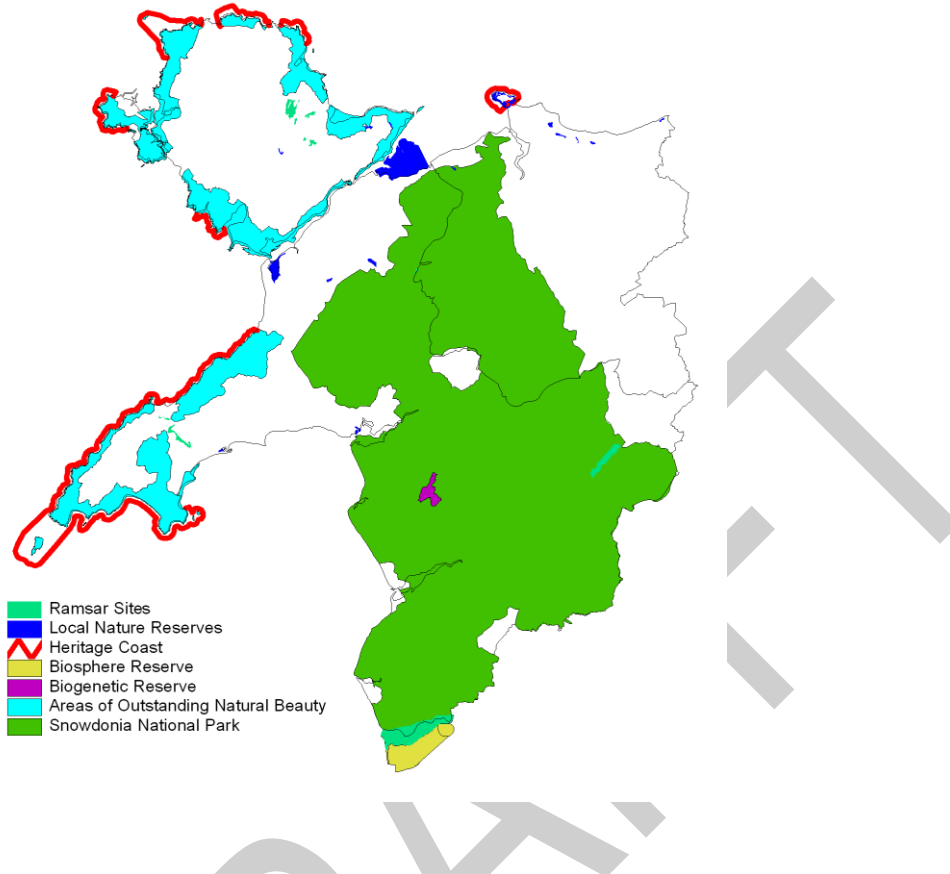
Environmental

- waste recycling and composting rates have increased;
- air quality is generally very good when compared with the rest of Wales;
- the local landscape has a rich variety of habitats: 206 sites of special scientific interest, 29 national nature reserves, 20 special areas of conservation; 8 special protection areas, etc;
- 138 km of the coastline is a designated Heritage Coast;
- 37,000 ha is designated as Areas of Outstanding Natural Beauty;
- there are 52 conservation areas, over 3600 listed buildings and over 400 scheduled ancient monuments;
- 1 World Heritage Site, which includes Caernarfon Castle and Town Walls and Beaumaris Castle
- Between 10 and 20% of properties in the Plan area are assessed as being at risk of flooding, which is likely to increase as a result of climate change.

DRAFT

Appendix 2 – Anglesey and Gwynedd Joint Local Development Plan Delivery Agreement

Conservation designations



Appendix 3 – Anglesey and Gwynedd Joint Local Development Plan Delivery Agreement

Key stages in the process of preparing the Joint LDP and participation opportunities

Stage 1: The Delivery Agreement (Regulation 9) When: January – November 2011

Which stage and when?	Purpose	Participants	How? Participation/consultation method	Reporting back methods:	Resources (in addition to usual staffing costs)
Drafting the Delivery Agreement (DA) January – March 2011	Prepare a document that is a public statement of the LDP preparation timetable and how stakeholders and the community can contribute.	Council Departments (e.g. Customer Care, Strategic and Improvement) Elected Members	Direct contact with individual officers Environment Scrutiny Committee (Gwynedd) and Anglesey Environment and Technical Services Scrutiny Committee (Anglesey) Joint Planning Policy Committee	Consider the suggestions and make appropriate amendments Publish minutes of Scrutiny and Joint Planning Policy Committee on websites	Printing and translation costs
Consult on the draft DA (6 weeks)	Inform stakeholders and communities that the Councils are going to prepare a LDP	Welsh Government Specific consultation bodies	Letter and copy of the draft DA to the Government and other specific consultation	Consider the suggestions and make appropriate amendments	Printing and posting costs Advertising

Appendix 3 – Anglesey and Gwynedd Joint Local Development Plan Delivery Agreement

Which stage and when?	Purpose	Participants	How? Participation/consultation method	Reporting back methods:	Resources (in addition to usual staffing costs)
(April – May 2011)	<p>Receive opinions on the contents of the DA</p> <p>Identify the relevant stakeholders</p>	<p>General consultation bodies</p> <p>Other relevant stakeholders (including the public)</p>	<p>bodies</p> <p>Letter to general consultation bodies and other stakeholders</p> <p>Publish the documents on the Councils' websites (www.gwynedd.gov.uk / www.anglesey.gov.uk)</p> <p>Copies in main Council offices and public libraries</p> <p>Advert in the local papers</p> <p>Provide an observations form which will include</p>	<p>Include contact details of contributors/suggestions re. LDP on Council data base to be used again</p> <p>A report summarising the suggestions and submitting the amended draft DA to the Scrutiny Committee, Joint Planning Policy Committee, The Board/Executive Committee</p> <p>Submit report to the full Committees</p>	<p>costs</p> <p>Translation costs</p>

Appendix 3 – Anglesey and Gwynedd Joint Local Development Plan Delivery Agreement

Which stage and when?	Purpose	Participants	How? Participation/consultation method	Reporting back methods:	Resources (in addition to usual staffing costs)
			<p>relevant questions</p> <p>An opportunity to submit observations on-line</p>	<p>in order to reach a decision to approve the amended draft DA as a document to be submitted to the Government</p>	
<p>Send Amended Draft DA to Government (October 2011)</p>	<p>Inform Government that the Councils have approved the amended draft DA</p> <p>Request Government agreement</p>	<p>Welsh Government</p>	<p>Letter and copy of the draft DA</p>	<p>Consider the suggestions and make appropriate amendments (if applicable)</p> <p>Joint Planning Policy Committee, The Board/Executive Committee and Full Councils (should significant amendments need to be submitted)</p>	<p>Printing and posting costs</p>

Appendix 3 – Anglesey and Gwynedd Joint Local Development Plan Delivery Agreement

Which stage and when?	Purpose	Participants	How? Participation/consultation method	Reporting back methods:	Resources (in addition to usual staffing costs)
Publish final DA agreed by Welsh Government (November 2011)	Inform about the approved DA and where it can be viewed	Welsh Government Specific consultation bodies General consultation bodies Other relevant stakeholders (including the public)	Letter Publish the documents on the Councils' websites (www.gwynedd.gov.uk www.anglesey.gov.uk) Copies in main Council offices and local public libraries	Letter to elected Members informing them that the Welsh Government has agreed to the DA	Printing costs

Stage 2 & 3: Pre-deposit Participation (Regulation 14) When: July 2010 – July 2012

Which stage and when?	Purpose	Participants	How? Participation/consultation method	Reporting back methods:	Resources (in addition to usual staffing costs)
Review and	In order to understand	Departments/Council	Direct contact with	Publish topic	Hold seminars

Appendix 3 – Anglesey and Gwynedd Joint Local Development Plan Delivery Agreement

Which stage and when?	Purpose	Participants	How? Participation/consultation method	Reporting back methods:	Resources (in addition to usual staffing costs)
<p>develop evidence base, including preparing a register of candidate sites</p> <p>(July 2010 – July 2012)</p>	<p>the context, review and expand the quantitative and qualitative information and identify the matters and objectives that the Joint LDP can address</p>	<p>Services (e.g. Strategic Direction Service, Council Land and Property Service, Highways and Municipal Service)</p> <p>Elected Members</p> <p>Specific consultation bodies</p> <p>General consultation bodies</p> <p>Other relevant stakeholders (including landowners and the public)</p>	<p>individual officers and established officers forums</p> <p>Public Seminars/Workshops</p> <p>Joint LDP Panel</p> <p>Direct contact with specific consultation bodies and various general consultation bodies</p> <p>Publish draft topic papers and invite suggestions</p> <p>Citizens Panel</p> <p>Key Stakeholders Group</p>	<p>papers and keep in evidence base library in public places and on Council websites</p> <p>Direct contact with specific consultation bodies and various general consultation bodies to inform about published topic papers</p> <p>Publish candidate sites register on Council websites</p>	<p>and meetings</p> <p>Printing costs</p> <p>Costs of commissioning consultants work when required</p>

Appendix 3 – Anglesey and Gwynedd Joint Local Development Plan Delivery Agreement

Which stage and when?	Purpose	Participants	How? Participation/consultation method	Reporting methods: back	Resources (in addition to usual staffing costs)
			<p>Publish candidate sites assessment methodology</p> <p>Publish forms to propose candidate sites, publicise this stage and invite proposals</p> <p>Publish candidate site register and invite comments</p>		
Screen the LDP (March 2011)	Confirm that the Joint LDP will need to be the subject of a Strategic Environmental Assessment (SEA)	Environmental Consultation Bodies	Direct Contact with the Environmental Consultation Bodies	<p>Inform the Environmental Consultation Bodies of the decision</p> <p>Publish the decision on</p>	None

Appendix 3 – Anglesey and Gwynedd Joint Local Development Plan Delivery Agreement

Which stage and when?	Purpose	Participants	How? Participation/consultation method	Reporting back methods:	Resources (in addition to usual staffing costs)
				Council websites	
Develop the SA Scoping Report (August 2010 – June 2011)	<p>Comply with SEA Regulations legislative requirements</p> <p>Identify baseline environmental information about the Joint LDP area</p> <p>Review plans, programmes and relevant policies</p> <p>Identify the key issues/matters</p> <p>Develop the SA/SEA framework which includes the sustainability objectives</p>	<p>Sustainability Appraisal Task Groups</p> <p>Nearby Authorities for relevant cross-boundary matters</p> <p>Elected members</p>	<p>Structured discussions/working groups</p> <p>Joint LDP Panel</p>	<p>Publish the Sustainability Appraisal Task Group minutes and LDP Panel on Council websites</p>	<p>Administrative Costs</p> <p>Consultants costs</p>
Habitats	Comply with the Habitats	Planning and	Structured	Publish the	Administrative

Appendix 3 – Anglesey and Gwynedd Joint Local Development Plan Delivery Agreement

Which stage and when?	Purpose	Participants	How? Participation/consultation method	Reporting back methods:	Resources (in addition to usual staffing costs)
<p>Regulations Assessment (HRA)</p> <p>(February – July 2011)</p>	<p>Directive legislative requirements</p> <p>Collect evidence, identify key issues and possible in-combination cross-boundary effects</p>	<p>Biodiversity Officers Group and relevant environmental consultation bodies</p> <p>Nearby Authorities for relevant cross-boundary matters</p>	<p>discussions/working groups</p>	<p>decision on Council websites</p> <p>Inform all participants of the conclusions</p>	<p>Costs</p> <p>Consultants costs</p>
<p>Publish SA Scoping Report for public consultation (6 weeks period)</p> <p>(July – August 2011)</p>	<p>Seek stakeholder opinion re. scope of the SA/SEA and objectives</p>	<p>The Public</p> <p>Specific consultation bodies</p> <p>General consultation bodies</p> <p>Council Departments/Services</p>	<p>Direct mail-shot (letters/e-mails) to raise awareness</p> <p>Letter and copy of Scoping Report to relevant Consultation Bodies, including Environmental Consultation Bodies</p> <p>Publish documents on Council websites (www.gwynedd.gov.uk/)</p>	<p>Publish received observations on public website</p> <p>Consider the observations and make appropriate amendments (if applicable)</p> <p>Letter to all participants to inform of consultation</p>	<p>Printing costs</p> <p>Administrative Costs</p> <p>Consultants costs</p>

Appendix 3 – Anglesey and Gwynedd Joint Local Development Plan Delivery Agreement

Which stage and when?	Purpose	Participants	How? Participation/consultation method	Reporting back methods:	Resources (in addition to usual staffing costs)
			www.anglesey.gov.uk) Copies in main Council offices and local public libraries	conclusions	
Identify the vision of the LDP Identify the main objectives of the LDP	Agree on a clear vision, with spatial relevance, of what kind of place is aimed to be achieved in the LDP area Agree on the main objectives of the LDP	Council Departments/Services The public Citizens Panel LDP Key Stakeholders Group Specific consultation bodies General consultation bodies Elected members	Direct contact with individual officers and established officers forums Letter and questionnaire to the Citizens Panel Structured discussions/working groups Seminars for Elected Members Scrutiny Committees	Publish minutes of Stakeholders Group/Scrutiny Committees/LDP Panel/Joint Planning Policy Committee and the Board/Executive Committee on Council websites Publish the vision and objectives on Council websites	Administrative Costs

Appendix 3 – Anglesey and Gwynedd Joint Local Development Plan Delivery Agreement

Which stage and when?	Purpose	Participants	How? Participation/consultation method	Reporting methods: back	Resources (in addition to usual staffing costs)
<p>Identify and test strategic options and strategy</p> <p>(April 2011 – March 2012)</p>	<p>Identify practical options and decide on their strengths and weaknesses</p>	<p>Established forums representing key groups in the local population</p>	<p>Joint LDP Panel The Board/Executive Committee</p>	<p>Publish minutes of Stakeholders Group/Scrutiny Committees/LDP Panel/Joint Planning Policy Committee and the Board/Executive Committee on Council websites</p> <p>Publish involvement report on Council websites</p> <p>Inform all</p>	<p>Administrative Costs</p>

Appendix 3 – Anglesey and Gwynedd Joint Local Development Plan Delivery Agreement

Which stage and when?	Purpose	Participants	How? Participation/consultation method	Reporting back methods:	Resources (in addition to usual staffing costs)
				participants of the conclusions of the work	
SA/SEA & HRA – Asses Strategic Options and Candidate Sites (April 2011 – March 2012)	Ensure that the Strategic Options and Candidate Sites are consistent with the sustainability objectives agreed on Ensure that the Strategic Options and Candidate Sites do not have a detrimental effect on the integrity of a Natura 2000 site	Sustainability Appraisal Task Group Planning and Biodiversity Officers Group and relevant environmental consultation bodies Nearby Authorities for relevant cross-boundary matters	Structured discussions/working groups	Publish a report of the assessment on Council websites Publish the minutes of the Sustainability Appraisal Task Group on Council websites	Publish Assessment Document Administrative Costs Consultants Costs
Local Elections May 2012					
Prepare	Establish a strategic	Council	Structured	Publish minutes of	Administrative

Appendix 3 – Anglesey and Gwynedd Joint Local Development Plan Delivery Agreement

Which stage and when?	Purpose	Participants	How? Participation/consultation method	Reporting back methods:	Resources (in addition to usual staffing costs)
<p>Proposals Document of Preferred Strategy (April – July 2012)</p>	<p>direction that will achieve the vision</p> <p>Confirm the general vision and objectives of the Councils, the strategic spatial options considered, the chosen spatial strategy chosen and the implications to developments e.g. the strategic sites</p> <p>Demonstrate, by applying the relevant soundness tests, that the process of choosing a strategy is robust.</p> <p>Identify consistent sites/that derive from the chosen strategy</p>	<p>Departments/Services (e.g. Strategic Direction Service)</p> <p>Government</p> <p>LDP Key Stakeholders Group</p> <p>Elected members</p>	<p>discussions/working groups</p> <p>Scrutiny Committees</p> <p>Joint LDP Panel</p> <p>Joint Planning Policy Committee</p> <p>The Board/Executive Committee</p>	<p>Stakeholders Group/Scrutiny Committees/LDP Panel/Joint Planning Policy Committee and the Board/Executive Committee on Council websites</p>	<p>costs</p>

Appendix 3 – Anglesey and Gwynedd Joint Local Development Plan Delivery Agreement

Which stage and when?	Purpose	Participants	How? Participation/consultation method	Reporting back methods:	Resources (in addition to usual staffing costs)
<p>SA/SEA & HRA – Assess Strategic Sites & other sites (April 2012 – July 2012)</p>	<p>Ensure that the Strategic Sites and other identified sites are consistent with the sustainability objectives agreed on</p> <p>Ensure that the Strategic Sites and other identified sites do not have a detrimental effect on the integrity of a Natura 2000 site</p>	<p>Sustainability Appraisal Task Group</p> <p>Planning and Biodiversity Officers Group and relevant environmental consultation bodies</p> <p>Nearby Authorities for relevant cross-boundary matters</p>	<p>Structured discussions/working groups</p>	<p>Publish a report of the assessment on Council websites</p> <p>Publish the minutes of the Sustainability Appraisal Task Group on Council websites</p>	

Appendix 3 – Anglesey and Gwynedd Joint Local Development Plan Delivery Agreement

Stage 4 & 5: Public Consultation on the Pre-Deposit Plan and respond to observations (Regulations 15 & 16) When: September 2012 – September 2013

Which stage and when?	Purpose	Participants	How? Participation/consultation method	Reporting back methods:	Resources (in addition to usual staffing costs)
<p>Pre-deposit public consultation (six weeks)</p> <p>(September – October 2012)</p>	<p>Inform of the Preferred Strategy Proposals Document</p> <p>Discuss and invite ideas re. the documents for a statutory period of 6 weeks</p>	<p>Government</p> <p>Specific consultation bodies</p> <p>General consultation bodies</p> <p>Citizens Panel</p> <p>The public and any other interested parties</p>	<p>Direct mail-shot to everyone on the LDP data base, general consultation bodies and Citizens Panel</p> <p>Letter and copy of the draft Preferred Strategy Proposals Document to the Government and specific consultation bodies</p> <p>Publish relevant documents, including a straightforward summary of the Pre-Deposit Plan, including</p>	<p>Acknowledge receiving observations by letter/e-mail</p> <p>Contact those who have responded to inform them how they can know the response to the consultation</p> <p>Publish a report on the response to the consultation on Council websites</p>	<p>Printing and translation costs</p> <p>Posting costs</p> <p>Advertising costs</p> <p>Preparing and holding exhibitions and meetings costs</p> <p>Administrative Costs</p>

Appendix 3 – Anglesey and Gwynedd Joint Local Development Plan Delivery Agreement

Which stage and when?	Purpose	Participants	How? Participation/consultation method	Reporting methods: back	Resources (in addition to usual staffing costs)
			<p>key information and the standard form for observations on the Council websites</p> <p>Publish an advert in the local papers</p> <p>Documents and relevant information available for scrutiny in the main Council offices and local public libraries</p> <p>The standard form for observations available in specified public places</p> <p>Various techniques to raise awareness, ensure understanding</p>		

Appendix 3 – Anglesey and Gwynedd Joint Local Development Plan Delivery Agreement

Which stage and when?	Purpose	Participants	How? Participation/consultation method	Reporting methods: back	Resources (in addition to usual staffing costs)
			and elicit discussion (e.g. press releases, exhibitions in key places, working groups/public seminars)		
Sustainability Appraisal Report (draft) (September – October 2012)	Demonstrate how the preferred choices were reached in view of the SA/SEA Invite observations on the SA		Direct mail-shot (letters/e-mails) to everyone on the LDP data base and consultation bodies Letter and copy of the SA to the Government and other specific consultation bodies Publish the SA Report on Council websites SA Report available for scrutiny in main		Printing and translation costs Posting costs

Appendix 3 – Anglesey and Gwynedd Joint Local Development Plan Delivery Agreement

Which stage and when?	Purpose	Participants	How? Participation/consultation method	Reporting back methods:	Resources (in addition to usual staffing costs)
			Council offices and local public libraries		
Consider the observations received (November 2012 – March 2013)	Give the Councils an opportunity to consider every observation appropriately Further review and develop the evidence base	Council Departments/Services Citizens Panel LDP Key Stakeholders Group Elected members Relevant stakeholders	Direct contact with individual officers and established officers forums Letter and purposeful questionnaire to the Citizens Panel Structured discussions/working groups Joint LDP Panel Joint Planning Policy Committee	Publish minutes of Stakeholders Group//LDP Panel/Joint Planning Policy Committee on Council websites Publish updated or new subject papers (where appropriate) and keep in evidence base library in public places and on Council websites Give brief general description of how	Printing costs Preparation and printing costs of general summary of the conclusions of the consultation and possible costs

Appendix 3 – Anglesey and Gwynedd Joint Local Development Plan Delivery Agreement

Which stage and when?	Purpose	Participants	How? Participation/consultation method	Reporting back methods:	Resources (in addition to usual staffing costs)
				the observations received have affected on LDP policies and proposals to those who responded to the public consultation and stakeholders	
SA/SEA and HRA – Assess substantial changes (November 2012 – March 2013)	Assess suggested alternative strategies or suggested amendments to the published Preferred Strategy against the agreed Sustainability Appraisal Framework and against the HRA criteria Consider the observations of the	Sustainability Appraisal Task Group Planning and Biodiversity Officers Group and relevant environmental consultation bodies Nearby Authorities for relevant cross-boundary matters	Structured discussions/working groups	Publish amendments/appendix to the Sustainability Report	Administrative Costs Consultants costs

Appendix 3 – Anglesey and Gwynedd Joint Local Development Plan Delivery Agreement

Which stage and when?	Purpose	Participants	How? Participation/consultation method	Reporting back methods:	Resources (in addition to usual staffing costs)
	consultation on the Sustainability Appraisal				
Prepare Deposit LDP and associated documents (April 2013 – September 2013)	Create completed version of the LDP and publish Create final Consultation Report and publish Create final Supplementary Planning Guidance and publish	Council Departments/Services (e.g. Strategic Direction Service/Planning Service/Legal Service) Elected members	Direct contact with individual officers and established officers forums Structured discussions/working groups Scrutiny Committees Joint LDP Panel Joint Planning Policy Committee	Publish minutes of Scrutiny Committees/Joint LDP Panel and Joint Planning Policy Committee on Council websites	None

Appendix 3 – Anglesey and Gwynedd Joint Local Development Plan Delivery Agreement

Stage 6 & 7: Public Consultation on the Deposit Plan and consider the observations (Regulations 17, 18 & 19) When: October 2013 – June 2014 (the timetable beyond November 2013 is indicative)

Which stage and when?	Purpose	Participants	How? Participation/consultation method	Reporting back methods:	Resources (in addition to usual staffing costs)
A public consultation on the Deposit LDP (6 weeks) (October – November 2013)	Give all interested parties an opportunity to view the LDP and submit observations	Government Specific consultation bodies General consultation bodies LDP Key Stakeholders Group Citizens Panel The public and any other interested parties	Direct mail-shot (letters/e-mails) to everyone on the LDP data base, the Citizens Panel and the general consultation bodies Letter and copy of the Deposit LDP and relevant documents along with a list of other documents to the Government and specific consultation bodies Publish Deposit LDP and each relevant document,	Acknowledge receiving observations through letter/e-mail Publish a copy of each observation received in the relevant public places Give details of the observations received on Council websites, noting where hard copies can be viewed Deal with observations on housing	Printing and posting costs Advertising costs Administrative Costs

Appendix 3 – Anglesey and Gwynedd Joint Local Development Plan Delivery Agreement

			<p>including a straightforward summary of the Pre-Deposit Plan, including key information and the standard form for observations on the Council websites</p> <p>Publish an advert in the local papers</p> <p>The Deposit Local Development Plan, relevant documents and information available for scrutiny in specific public places</p> <p>The standard form for observations available for use in specified public places</p> <p>Various techniques to raise awareness,</p>	<p>designations in accordance with Regulations 20 and 21 (see below)</p>	
--	--	--	---	--	--

Appendix 3 – Anglesey and Gwynedd Joint Local Development Plan Delivery Agreement

			ensure understanding and elicit discussion (e.g. press releases, exhibitions in key places, working groups/public seminars)		
SA/SEA – Final SA available for viewing along with the Deposit LDP (October 2013 – November 2013)	Demonstrate how the LDP is in accordance with the agreed Sustainability Appraisal Framework	As above	As above	As above	As above
Consider the observations received (December 2013 - June 2014)	Give the Councils an opportunity to consider every observation appropriately Further review and develop the evidence base	Council Departments/Services (e.g. Strategic Direction Service/Planning Service/Legal Service) Those who have made observations	Direct contact with individual officers and established officers forums Structured discussions/working groups Joint LDP Panel	Publish minutes of LDP Panel/Joint Planning Policy Committee on Council websites Publish consultation report outlining how the Councils have considered each	Printing and posting costs Administrative Costs

Appendix 3 – Anglesey and Gwynedd Joint Local Development Plan Delivery Agreement

		<p>to have further explanation, reach agreement on 'common ground' matters</p> <p>Elected members</p>	<p>Joint Planning Policy Committee</p>	<p>observation and place in relevant public places and on Council websites</p> <p>Inform those who have made observations that a response report is available to view</p> <p>Publish updated or new subject papers (where appropriate) and keep in evidence base library in public places and on Council websites</p>	
<p>SA/SEA & HRA – assess new/different sites (that had not previously been considered)</p> <p>(December 2013 – June 2014)</p>	<p>Assess the new/different sites against the agreed Sustainability Appraisal Framework and against the HRA criteria</p>	<p>Sustainability Appraisal Task Group</p> <p>Planning and Biodiversity Officers Group and relevant environmental consultation bodies</p>	<p>Structured discussions/working groups</p>	<p>Complete the Sustainable Assessment Report, submit a copy to the LDP Panel and the Council Boards</p> <p>Publish the final</p>	<p>Administrative Costs</p> <p>Consultants costs</p> <p>Printing costs</p>

Appendix 3 – Anglesey and Gwynedd Joint Local Development Plan Delivery Agreement

		Nearby Authorities for relevant cross-boundary matters		Sustainability Assessment and place on Council websites and in relevant public places	
--	--	--	--	---	--

DRAFT

Appendix 3 – Anglesey and Gwynedd Joint Local Development Plan Delivery Agreement

Stage 8: Consultation on alternative sites (Regulation 20 & 21) When: January 2014 - June 2014 (indicative)

Which stage and when?	Purpose	Participants	How? Participation/consultation method	Reporting back methods:	Resources (in addition to usual staffing costs)
<p>A public consultation on alternative sites (6 weeks) (January 2014 - February 2014)</p>	<p>To give everyone an opportunity to submit observations on (a) alternative sites proposed during the consultation period on the Deposit LDP and/ or (b) on suggestions made in relation to the sites allocated in the Deposit Plan, i.e. comments to alter or delete allocated sites.</p>	<p>Citizens Panel The public and any other interested parties Specific consultation bodies General consultation bodies LDP Key Stakeholders Group</p>	<p>Direct mail-shot (letters/e-mails) to everyone on the LDP data base, and the Citizens Panel to inform them of where the details of the alternative sites can be viewed and the procedure for submitting observations on those proposed Letter and copy of relevant information regarding the proposed sites to the specific and general consultation bodies</p>	<p>Publish a copy of the observations received regarding the alternative sites during the consultation period on the Council websites and in relevant public places</p>	<p>Printing and posting costs Advertising costs Administrative Costs</p>

Appendix 3 – Anglesey and Gwynedd Joint Local Development Plan Delivery Agreement

			<p>along with details regarding the procedure for submitting observations</p> <p>Publish the observations on the alternative sites on Council websites and place a copy for scrutiny in relevant public places, along with details regarding the procedure to submit observations on those proposed</p> <p>Publish an advert in the local papers</p> <p>Various techniques to raise awareness, ensure understanding and elicit discussion (e.g. press</p>		
--	--	--	---	--	--

Appendix 3 – Anglesey and Gwynedd Joint Local Development Plan Delivery Agreement

			releases)		
<p>Consider the observations received during the above consultation period regarding the alternative sites</p> <p>(March 2014 – June 2014)</p>	<p>To consider whether or not there is a need to recommend making amendments to the Deposit LDP and include details of this in the Final Consultation Report</p> <p>(Note: While Councils are required to raise awareness and make an assessment of the new/different sites suggested by those consulted with during the consultation period on the Deposit LDP, it will be the Inspector's decision whether one or all</p>	<p>LDP Key Stakeholders Group</p> <p>Elected Members</p>	<p>Structured discussions/working groups</p> <p>Joint LDP Panel</p> <p>Joint Planning Policy Committee</p>	<p>Publish minutes of Key Stakeholders Group//Joint LDP Panel/Joint Planning Policy Committee on Council websites</p> <p>Publish a report stating the recommendations of the Councils and place on Council websites and in relevant public places</p>	<p>Printing costs</p> <p>Administrative Costs</p>

Appendix 3 – Anglesey and Gwynedd Joint Local Development Plan Delivery Agreement

	of these alternative sites are included in the adopted plan)			
--	--	--	--	--

Stage 9: Opting for focussed changes – (Circular by the Government – CL-01-2009 (APAA-09-33-004)) When: July – August 2014

Which stage and when?	Purpose	Participants	How? Participation/consultation method	Reporting methods: back	Resources (in addition to usual staffing costs)
Should it be required: – 6 week consultation period on the “Appendix” to the Local Development Plan and its associated site evaluation documents.	Inform all stakeholders that the Councils suggest that the Deposit Joint LDP needs to be amended and ask for observations which will be submitted to the Examination Inspector.	<p>Citizens Panel</p> <p>The public and all other interested parties</p> <p>Specific consultation bodies</p> <p>General consultation bodies</p> <p>LDP Stakeholders Group</p>	<p>Publish an advert in the local papers</p> <p>Publish a statement on Council websites</p> <p>Direct mail-shot (letters/e-mails) to everyone on the LDP data base, and the Citizens Panel to inform them of where the document can be</p>	Not relevant	<p>Advertising costs</p> <p>Printing costs</p> <p>Administrative Costs</p>

Appendix 3 – Anglesey and Gwynedd Joint Local Development Plan Delivery Agreement

			<p>viewed</p> <p>Letter and copy of relevant information regarding the specific amendments to the specific and general consultation bodies along with details of the procedure for submitting observations</p> <p>Publish the observations on the specific amendments on Council websites and place a copy for scrutiny in relevant public places</p>		
--	--	--	---	--	--

Appendix 3 – Anglesey and Gwynedd Joint Local Development Plan Delivery Agreement

Stage 10: Submitting the Joint LDP to the Government for Examination (Regulation 22) When: November 2014 (indicative)

Which stage and when?	Purpose	Participants	How? Participation/consultation method	Reporting methods: back	Resources (in addition to usual staffing costs)
Summit the LDP and full series of associated documents (including the SA Report) to the Welsh Government	Inform all stakeholders that the Councils have submitted the LDP to the Government	Those who have made observations and all other stakeholders who have declared that they wish to be informed of the development of the LDP	<p>Publish an advert in the local papers</p> <p>Publish a statement on Council websites re. submitting the LDP for Inspection</p> <p>Direct mail-shot (letters/e-mails) to those who have made observations and other stakeholders who have declared that they wish to be informed of the development of the LDP</p> <p>Publish a copy of all</p>	Not relevant	<p>Advertising costs</p> <p>Printing costs</p> <p>Administrative costs</p>

Appendix 3 – Anglesey and Gwynedd Joint Local Development Plan Delivery Agreement

			the documents submitted to the Government on Council websites and in relevant public places		
--	--	--	---	--	--

Stage 11: The Public Examination (Regulation 23) When: April 2015 (indicative)

Which stage and when?	Purpose	Participants	How? Participation/consultation method	Reporting methods: back	Resources (in addition to usual staffing costs)
Publish a notice of the Public Examination (at least 6 weeks before the Inspection)	Inform stakeholders that the Examination is taking place	All of those who made observations and any other parties who have declared an interest in the Examination/the LDP process	Letter/e-mail to those who have made observations and other relevant stakeholders giving details of the Examination Publish an advert in the local papers. Publish details of the Examination on	Not relevant	Posting costs Advertising costs Printing costs

Appendix 3 – Anglesey and Gwynedd Joint Local Development Plan Delivery Agreement

			<p>Council websites</p> <p>Place posters in relevant public places giving details of the Examination</p>		
Pre-Examination Meeting	To give the Inspector the opportunity to inform of the procedure of the Examination and ask for additional information (should this be required)	All of those who have made observations and anyone else who have declared an interest in the Examination/the LDP process	<p>Letter/e-mail to those who have made observations and other relevant stakeholders giving details of the Examination</p> <p>Publish the details of the Pre-Examination meeting on Council websites</p> <p>Other appropriate techniques to raise awareness and ensure understanding (e.g. press releases)</p>	Not relevant	<p>Posting costs</p> <p>The costs involved with holding the meeting (e.g. simultaneous translation, fees, Programme Officer)</p>

Appendix 3 – Anglesey and Gwynedd Joint Local Development Plan Delivery Agreement

Examination of the LDP	Get independent opinion re. the soundness of the LDP and the observations received.	All of those who have made observations and who have not withdrawn their objections	Around the table discussion sessions Hearings Formal Hearings (The Inspector will decide on the best method to submit verbal evidence) Formal written statements	Inspector's Report	Costs of holding the examination (e.g. simultaneous translation, fees, Programme Officer, administrating the Inspection) Administrative costs
------------------------	---	---	--	--------------------	--

Stage 12: Publish Public Inspector's Report (Regulation 24) When: January 2016 (indicative)

Which stage and when?	Purpose	Participants	How? Participation/consultation method	Reporting back methods:	Resources (in addition to usual staffing costs)
Receive/ publish Report of Public Examination	Inform of the decisions of the Inspector of the Public Examination	Elected members Specific consultation bodies	Letter/e-mail to those who have made observations and other relevant stakeholders	Not relevant	Printing costs Administrative costs

Appendix 3 – Anglesey and Gwynedd Joint Local Development Plan Delivery Agreement

		<p>General consultation bodies</p> <p>LDP Key Stakeholders Group</p> <p>Citizens Panel</p> <p>All of those who made observations, the public and any other interested parties</p>	<p>informing them of the Report and where it can be viewed along with any other relevant details</p> <p>Other appropriate techniques to raise awareness and to ensure understanding (e.g. press releases)</p> <p>Make Report available for inspection on Council websites and in other relevant public places</p>		
Prepare the response of the Councils to the Inspector's Report	Raise awareness re. any significant amendments that need to be made in order to adhere to the Inspector's	Elected members	Report to the Joint Planning Policy Committee highlighting any significant changes	Publish the minutes of the Joint Planning Policy Committee and full Councils on Council websites	

Appendix 3 – Anglesey and Gwynedd Joint Local Development Plan Delivery Agreement

	Report (Note: The Councils or the Stakeholders will not have the right to object to any amendments that the Inspector wishes to see)		Report to the full Councils to reach a decision to adopt the LDP		
--	---	--	--	--	--

Stage 13: Adopt the LDP (Regulation 25) When: April 2016 (indicative)

Which stage and when?	Purpose	Participants	How? Participation/consultation method	Reporting methods: back	Resources (in addition to usual staffing costs)
Formally adopt the LDP as the statutory development plan for the Gwynedd Planning Authority area (within 8 weeks of receiving the Inspector's Report)	Inform stakeholders and the public of the decision to adopt the LDP	Elected members All of those who made observations and any other parties who have declared an interest in the LDP process The public	Letter/e-mail to those who have made observations and other relevant stakeholders informing them of adopting the LDP, enclosing a copy of the adoption statement. Make all LDP	Not relevant	Posting costs Printing costs Administrative costs

Appendix 3 – Anglesey and Gwynedd Joint Local Development Plan Delivery Agreement

			<p>documents including adoption statement available on Council websites and in other relevant public places</p> <p>Publish an advert in the local papers</p> <p>Other appropriate means of raising awareness and ensuring understanding (e.g. press releases)</p> <p>Send 4 copies of the LDP and adoption statement to the Government</p>		
--	--	--	--	--	--

Appendix 4 – Anglesey and Gwynedd Joint Local Development Plan Delivery Agreement

The role of different committees in the process of preparing the Joint LDP

	1	2	3	4	5	6
	PROVIDE AGREEMENT	STRATEGIC CHOICES AND THE PREFERRED STRATEGY	DEPOSIT PLAN	REPORT ON THE CONSULTATION RESPONSES IN THE DEPOSIT PLAN	PLAN EXAMINATION REPORT	ADOPT THE PLAN
Gwynedd and Anglesey Scrutiny Committee	Scrutinise	Scrutinise	Scrutinise			
Gwynedd Council Board and Anglesey Council Executive Committee	Recommend Agreement	Agree				
Joint Planning Policy Committee	Advise	Advise	Agree	Agree	Accept	
Gwynedd and Anglesey Full Councils	Agree					Adopt

Appendix 5 – Anglesey and Gwynedd Joint Local Development Plan Delivery Agreement

Tests of Soundness

Procedural Tests

G1 The Plan has been prepared in accordance with the Delivery Agreement including the Community Involvement Scheme.

G2 A Sustainability Appraisal was undertaken in relation to the plan and its policies including a Strategic Environmental Assessment.

Consistency Tests

C1 The land use plan has considered plans, policies and other relevant strategies associated with the area or nearby areas.

C2 It considers national policy.

C3 It considers the Wales Spatial Plan.

C4 It has considered the relevant Community Strategy, Strategies and National Park Management Plan.

Cohesive and Efficiency Tests

CE1 The Plan notes a cohesive strategy with reasonably derived policies and designations and, where cross-boundary matters are relevant, it assimilates with the development plans prepared by nearby authorities.

CE2 The strategy, the policies and the designations are realistic and are appropriate and they have considered the relevant alternative choices and are based on a sound and credible evidence base.

CE3 Clear mechanisms are in place for implementing and monitoring.

Appendix 5 – Anglesey and Gwynedd Joint Local Development Plan Delivery Agreement

CE4 The Plan is relatively flexible with regard to ability to deal with changing circumstances.

DRAFT

Appendix 6 – Anglesey and Gwynedd Joint Local Development Plan Delivery Agreement

Possible Risks and Response Methods

Risk	Possible Effect	Mitigation Measures
1. Further requirements deriving from legislation or new national guidelines	<ul style="list-style-type: none"> • Need to undertake more work in order to amend the Plan and the work programme • Programme slippage 	Monitor work that's being done with regard to new legislation and guidelines so that we are in a good position to respond as soon and effectively as possible to any changes
2. Heavier than expected work load	Programme slippage	<ul style="list-style-type: none"> • Ensure a realistic timetable which has flexibility • Ensure that we consider how much time it takes to undertake every aspect of the work • Consider additional resources
3. Substantial objections by consultation bodies	Programme slippage	<ul style="list-style-type: none"> • Flexibility built into the timetable • Ensure that we consult early on (before the formal consultation period) with specific bodies
4. Lack of political consensus	<ul style="list-style-type: none"> • Failure to agree on the key aspects of the Plan • Conflict undermining what is noted in the Plan 	Seek to resolve as much conflict as possible in the Joint LDP Panel meetings and by discussing with the leading Members e.g. Portfolio Leaders
5. Failure to report to a committee at the appropriate time	<ul style="list-style-type: none"> • Programme slippage 	Discuss requirements with those that arrange both Council's committee timetable as soon as possible

Appendix 6 – Anglesey and Gwynedd Joint Local Development Plan Delivery Agreement

Risk	Possible Effect	Mitigation Measures
6. Lack of consensus between different Council departments	Failure to agree on key aspects of the Plan	<ul style="list-style-type: none"> • Ensure that we are in accordance with the Councils' strategies (Community Strategy, Three Year Plan) • Ensure that there are effective internal discussion procedures in place in relation to the Plan
7. Delay with translation/printing process	Programme slippage	<ul style="list-style-type: none"> • Use external translators • Share the translation work to different individuals/companies • Consider additional resources
8. Lack of available funding throughout the process of preparing the Plan	<ul style="list-style-type: none"> • Failure to fund specific and important work tasks e.g. as part of the evidence base • Programme slippage 	Constant monitoring in order to ensure that the funding is used in the most effective way
9. Change in staff or losing staff	<ul style="list-style-type: none"> • Loss of capacity and skills • More pressure on other officers • Programme slippage 	Consider additional resources
10. Lack of expertise	<ul style="list-style-type: none"> • Lower standard of work • Failure to identify weaknesses and note suggestions while verifying the work of consultants • Problems with regard to ensuring the 'soundness' of the Plan 	Train specific staff to specialise in different fields

Appendix 6 – Anglesey and Gwynedd Joint Local Development Plan Delivery Agreement

Risk	Possible Effect	Mitigation Measures
11. Failure on behalf of the Planning Inspectorate to meet the timetable/targets	Delay with regard to holding the investigation and/or in relation to receiving the report	Ensure close contact with the Planning Inspectorate in order to ensure a process which is as easy as possible. This will also give the opportunity of early warning regarding any problems
12. Plan fails the 'soundness' test	The Plan cannot be adopted without having to undertake further substantial work	Ensure that the LDP is sound by ensuring that we conform to procedures, laws, regulations along with all other specific soundness tests
13. Legal challenge	<ul style="list-style-type: none"> • Abolish the adopted LDP (or parts of it) • Additional workload 	Ensure that we adhere to procedures, laws, regulations etc.
14. Elections	<ul style="list-style-type: none"> • Programme slippage • New members with different opinion regarding the contents of the Plan – changing priorities 	Ensure a realistic timetable with built-in flexibility
15. Problems with I.T. work/Problems in relation to GIS work	Programme slippage	<ul style="list-style-type: none"> • Ensure a realistic timetable with built-in flexibility • Ensure that the Council's I.T. Service is aware of the requirements and schedule time to this purpose • Purchase appropriate software

Appendix 6 – Anglesey and Gwynedd Joint Local Development Plan Delivery Agreement

Risk	Possible Effect	Mitigation Measures
16. Results of the SA/SEA outlining the unexpected problems	<ul style="list-style-type: none"> • Additional workload • Programme slippage 	<ul style="list-style-type: none"> • Ensure that the timetable is flexible enough to deal with such a situation • Consider additional resources
17. Consultation bodies failing to submit observations as soon as expected	Programme slippage	<ul style="list-style-type: none"> • Ensure that specific groups are consulted early on at any relevant stage during the process. • Seek to consult at times of the year when the majority of people are likely to be at work e.g. not during August or over Christmas
18. Receive significant information late in the day	<ul style="list-style-type: none"> • Programme slippage • Additional workload 	Ensure that the timetable is flexible enough to deal with such a situation
19. Requirements associated with responding to the Wylfa B project	<ul style="list-style-type: none"> • Programme slippage • Additional workload 	<ul style="list-style-type: none"> • Monitor progress with regard to this project • Ensure a close working relationship between the Energy Island Project Team and the Joint Planning Policy Unit

Appendix 7 – Anglesey and Gwynedd Joint Local Development Plan Delivery Agreement

The Joint Planning Policy Unit has a database of individuals and organizations that wish to be involved including local businesses, voluntary groups, government bodies and individuals. The Joint Planning Policy Unit proposes to engage with umbrella organizations who will in turn engage with their members. These are the general and specific consultation bodies. The list of specific and general consultation bodies identified will constantly evolve throughout the Joint Local Development Plan preparation process. Following the publication of the Delivery Agreement the most up to date version of this list can be viewed on the Councils' website www.gwynedd.gov.uk and www.anglesey.gov.uk (address to be confirmed)

If you would like to be added to the LDP consultation database, want to change your details or be removed then please contact the Joint Planning Policy Team via planningpolicy@gwynedd.gov.uk (address to be confirmed). All those on the database will be kept informed of progress and opportunities for involvement via letter or preferably e-mail throughout the preparation of the Joint Local Development Plan.

General Consultation Bodies

a) Voluntary bodies and others

Age Concern (Cymru)
Barnados
Butterfly Conservation Wales
BTCV
Council for the Protection of Rural Wales
Cyfeillion y Ddaear(Mon & Gwynedd)
Communities First
Communities First - Maes Hyfryd
Communities First - Morlo
Communities First - Porth y Felin
Communities First - Amlwch
Communities First - Llangefni
Wales Council for Voluntary Action
Mantell Gwynedd
South Pwllheli Community First Partnership Area
Pen Llyn Community First Partnership Area
Marchog Community First Partnership Area
The People of Bangor Community Group
Bangor Needs Change
Abermaw Community First Partnership Area
Bowydd a Rhiw Community First Partnership Area
Talysarn Community First Partnership Area
Pobl Pablig Community First Partnership Area
Gwarchod Bermo

Appendix 7 – Anglesey and Gwynedd Joint Local Development Plan Delivery Agreement

Barmouth Resort Improvement Group
Undeb Myfyrwyr Bangor Students Union
Bangor Creadigol
Mudiad Ysgolion Meithrin
Penrhyn Heritage Railway Trust/ Felin Fawr Cyf.
Cyfeillion Amgueddfa ac Oriel Gwynedd
Fairbourne Rights of Access Group
Bangor Civic Society
Campaign for Dark Skies
Cymdeithas Cynghorau Bro a Thref,
Cymdeithas Pysgota Cefni
Cymdeithas Cynghorau Bro a Thref Cymru
Envirowatch UK
Friends of the Earth (Mon & Gwynedd)
Gwasanaeth Ieuenctid CSYM
Greenpeace
Keep Wales Tidy
Mudiad Ffermwyr Ifanc
Menai Bridge Heritage Trust
Menai Bridge & District Civic Society
North Wales Housing Association
National Trust
North Wales Wildlife Trust
North Wales Energy Efficiency Advice Centre
Penhesgyn Action Group
PAWB(People Against Wylfa B)
The Ramblers Association
RSPB
Red Wharf Bay Association
Sports Council for Wales
Sustrans
Tanc Meddwl Cymuned Mon
Tourism Partnership North Wales
Treaddur Residents Association
Wales Pre School Play Groups Assoc
Wales Tourist Board
Wildscape
Ymgyrch Diogelu Cymru Wledig
Ynys Cybi Action Committee
Wales Pre School Play Groups Assoc
H.A.R.T (Residents Association)
C.O.B.T.R.A Centre of Bangor Tenants & Residents Association
Bangor Pride Business Group

Appendix 7 – Anglesey and Gwynedd Joint Local Development Plan Delivery Agreement

Upper Bangor Society
MATRA (Maesgeirchen and Tanybryn Residents Association)
North Wales Probation Service
Cylch Meithrin Penysarn
CAB Gwynedd a De Môn
Grwp Bae Hirael
Transition Town Bangor
Rail and bus user group
National Women's Alliance Wales
CTC Gwynedd & Mon
Seren
Antur Stiniog
Y Dref Werdd (Blaenau Ffestiniog)
Y Ganolfan Gymdeithasol (Blaenau Ffestiniog)

Bodies representing interests of various racial, ethnic or national groups

- b) North Wales Race Equality Network
Gypsy Council
Digartref Ynys Mon
Equality and Human Rights Commission
BEN (Black Environment Network)
Traveller Law Reform Coalition
Intercultural Skills Link
Chinese Woman Society Wai Kwun
North Wales Chinese Society
South Pwllheli Ethnic Minority Project

Bodies representing various religious groups

- c) Bangor Cathedral
Bangor Islamic Centre
Diocese of Bangor
Wales Orthodox Mission
Bangor Mosque
CYTUN
Clebran
Fairbourne Rights of Access Group
Inter-Cultural Skills Network

Bodies representing the interest of disabled individuals

- d) Alzheimer's Society
British Heart Foundation

Appendix 7 – Anglesey and Gwynedd Joint Local Development Plan Delivery Agreement

North Wales Society for the Blind
Agoriad Cyf.
Arfon Access Group
Bangor & District Mencap Society
Jas Chanay Disablement Welfare Rights
North Wales Deaf Association
Taran Disability Forum Ltd
RNIB Cymru
Crossroads Caring for Carers
ARC Cymru
Macular Degeneration Group
Disablement Welfare Rights
Fforwm Anableddau Taran Cyf
RNIB(Royal Nat. Inst. Blind)
TARAN Disability Forum Ltd
Y Gamfa (CCET)
CAIS – Asiantaeth Cyffuriau ac Alcohol
Anheddau Cyf.
Abbey Road Resource Centre
Disability Wales
Disability Rights Commission
Disabled Persons Transport Advisory Committee
Core Disability Group
Arfon Access Group
Dwyfor Access Group
Meirionnydd Access Group

Bodies representing the interests of those that run a business

- e) Chamber of Trade
Chamber of Commerce
Federation of Small Business
Farmers Union of Wales
Menter Mon
National Farmers Union
National Farmers Union - Ynys Mon
Tywyn Chamber of Tourism & Commerce
Siambr Fasnach Pwllheli
Siambr Fasnach Tywyn
Siambr Fasnach Bermo
Siambr Fasnach Bangor
Chartered Institute of Building – North Wales Centre
HBF – Home Builders Federation

Appendix 7 – Anglesey and Gwynedd Joint Local Development Plan Delivery Agreement

Bodies representing the interests of Welsh culture

- f)** Bwrdd yr Iaith Gymraeg
 - Fforum Iaith Mon
 - Menter Mon
 - Y Goriad (Papur Bro Bangor a'r Felinheli)
 - Merched y Wawr
 - Papurau Bro
 - Menter Iaith Dyffryn Ogwen
 - Pobl Ifanc Ardudwy
 - Gwynedd Gynaladwy
 - Cyngor Cefn Gwlad
 - Llaingoch Heritage Committee
 - Hunaiaith
 - Urdd Gobaith Cymru
 - Ffederasiwn Ffermwyr Ifanc
 - Cyfeillion Llŷn
 - Cymdeithas yr Iaith

- g) Groups that represent gay, lesbians and bisexuals**
 - Stonewall

Appendix 8 – Anglesey and Gwynedd Joint Local Development Plan Delivery Agreement

Specific Consultation Bodies

Government Bodies

Cadw
Countryside Council for Wales
Secretary of State for Transport

Trade and Industry Department of the UK Government
Ministry of Defence

Environment Agency Wales
Welsh Government
Transport Department of the UK Government
Home Office

Adjoining Local Authorities

Snowdonia National Park Authority
Denbighshire County Council
Ceredigion County Council

Conwy County Borough Council
Powys County Council

City/ Community/ Town Councils within Anglesey and Gwynedd (excluding Snowdonia National Park)

Anglesey

Aberffraw Community Council
Beaumaris Town Council
Bodffordd Community Council
Bryngwran Community Council
Cwm Cadnant Community Council
Trewalchmai Community Council
Llanddaniel Fab Community Council
Llanddyfnan Community Council
Llanerchymedd Community Council
Llanfachraeth Community Council
Llanfaethlu Community Council
Llanfairpwll Community Council
Llanfair yn Neubwll Community Council
Llangefni Town Council
Llangristiolus Community Council
Llanidan Community Council
Moelfre Community Council
Pentraeth Community Council
Menai Bridge Town Council
Rhosybol Community Council
Treaddur Community Council
Valley Community Council

Amlwch Town Council
Bodedern Community Council
Bodorgan Community Council
Holyhead Town Council
Cylch-y-Garn Community Council
Llanbadrig Community Council
Llanddona Community Council
Llaneilian Community Council
Llaneugrad Community Council
Llanfaelog Community Council
Llanfair Mathafarn Eithaf Community Council
Llanfihangelesceifiog Community Council
Llangoed and Penmon Community Council
Mechell Community Council
Penmynydd and Star Community Council
Rhoscolyn Community Council
Rhosyr Community Council
Tref Alaw Community Council

Appendix 8 – Anglesey and Gwynedd Joint Local Development Plan Delivery Agreement

Gwynedd

Bangor City Council
Llanddeiniolen Community Council
Betws Garmon Community Council
Llanberis Community Council
Llandwrog Community Council
Llanllechid Community Council
Llanrug Community Council
Pentir Community Council
Y Felinheli Community Council
Botwnnog Community Council
Clynnog Community Council
Dolbenmaen Community Council
Llanbedrog Community Council
Llannor Community Council
Nefyn Town Council
Porthmadog Town Council
Tudweiliog Community Council
Arthog Community Council
Festiniog Town Council
Llanfrothen Community Council
Mawddwy Community Council
Tywyn Town Council
Caernarfon Town Council
Bethesda Community Council
Bontnewydd Community Council
Llandygai Community Council
Llanddeiniolen Community Council
Llanllyfni Community Council
Llanwnda Community Council
Waunfawr Community Council
Aberdaron Community Council
Buan Community Council
Criccieth Town Council
Llanaelhaearn Community Council
Llanengan Community Council
Llanystumdwy Community Council
Pistyll Community Council
Pwllheli Town Council
Abermaw/Barmouth Town Council
Corris Community Council
Llandderfel Community Council
Llangywer Community Council
Penrhyndeudraeth Town Council

City/ Community/ Town Councils that adjoin the Gwynedd Local Planning Authority area

Abergwyngregyn Community Council
Aberdyfi Community Council
Brithdir, Llanfachreth, a Rhydymain Community Council
Dyffryn Ardudwy a Thalybont Corris Community Council
Llanbedr Community Council
Llanelltyd Community Council
Llanfihangel-y-Pennant Community Council
Llanuwchllyn Community Council
Pennal Community Council
Trawsfynydd Community Council
Bro Machno Community Council
Llangwm Community Council
Llandrillo Community Council
Cynwyd Community Council
Beddgelert Community Council
Bala Town Council
Bryncrug Community Council
Dolgellau Town Council
Ganllwyd Community Council
Harlech Town Council
Llanegryn Community Council
Llanfair Community Council
Llangelynnin Community Council
Llanycil Community Council
Maentwrog Community Council
Talsarnau Community Council
Dolwyddelan Community Council
Cerrigydrudion Community Council
Llanfairfechan Community Council
Corwen Community Council
Glantwymyn Community Council

Appendix 8 – Anglesey and Gwynedd Joint Local Development Plan Delivery Agreement

Infrastructure Providers and Electronic Communications

Welsh Water
Scottish Power

British Telecommunications plc
SP Energy Networks & Wales and
West Utilities

National Grid
Betsy Cadwaldr University Local
Health Board
Mobile Operators Association

DRAFT

Appendix 9 - Anglesey and Gwynedd Joint Local Development Plan Delivery Agreement

Possible Membership of Key Stakeholders Group

Mantell Gwynedd
Medrwn Mon
One Voice Wales
Welsh Government
Environment Agency Wales
Coleg Meirion Dwyfor
Coleg Menai
North Wales Fire and Rescue Service
Job Centre Plus
Betsy Cadwaladr University Health Board
Bangor University
Countryside Council for Wales
North Wales Police
Community Safety Partnerships Gwynedd & Anglesey
Health, Care and Wellbeing Partnerships Gwynedd & Anglesey
Children and Young People's Partnerships Gwynedd & Anglesey
Community First Gwynedd & Anglesey
Economic Partnership Gwynedd
Economic Regeneration Partnership Anglesey
Corporate Policy Units Gwynedd & Anglesey
Environmental Forum Gwynedd & Anglesey
Snowdonia National Park Authority
AONB Joint Consultative Bodies Llyn & Anglesey
Area Regeneration Officers Gwynedd & Anglesey
Local Access Forum

Atodiad/ Appendix 1
Ymateb i'r ymgynghoriad/ Response to consultation

Cwestiwn 1a A ydych yn meddwl bod cynnwys a phwrpas y Cytundeb Cyflawni drafft yn glir ac yn ddealladwy?/ Do you consider that the content and purpose of the draft Delivery Agreement is clear and understandable?

Sylwebydd(ion)/ Respondent	Envriowatch UK
Sylw(adau)/ Comment(s)	O'r farn fod y ddogefn yn glir a dealladwy yn arbennig y ffordd bwriedir cysylltu gyda'r gwmpiau anodd i'w cyrraedd yn ystod y cyfnodau ymgynghori, sef y cyhoedd./ Considers that the document is clear and understandable especially the approach to reach the difficult to reach during consultation stages, i.e. the public.
Ymateb Swyddog/ Officer Response	Croesawu'r sylw o gefnogaeth/ Welcome the support
Diwygiad a awgrymir/ Suggested modification	Dim yn berthnasol/ Not applicable

Cwestiwn 1b Ydy'r Cytundeb Cyflawni Drafft yn dangos y camau/ cyfnodau paratoi'r CDLI ar y Cyd yn glir?/ Does the draft Delivery Agreement make clear the appropriate steps/ stages in respect of the Joint LDP preparation?

Cwestiwn 2a A ydych yn meddwl fod yr amserlen arfaethedig ar gyfer paratoi'r CDLI ar y Cyd yn realistig ac yn un y gellir ei weithredu?/ Do you consider the proposed timetable for the preparation of the Joint LDP to be realistic and deliverable?

Sylwebydd(ion)/ Respondent	Cyngor Cymuned Llanystumdwy Community Council
Sylw(adau)/ Comment(s)	Yn pryderu fod yr amserlen i ymgymgryd a'r adolygiad tystiolaeth a chamau 2 a 3 yn rhy hir a bod y cyfnod ymgynghoriad cyhoeddus yn rhy fyr/ Concerned that the timetable for undertaking the evidence review and steps 2 and 3 is too long and that the consultation period is too short.
Ymateb Swyddog/ Officer Response	Mae'r canllawiau a gyhoeddwyd gan Lywodraeth Cymru yn awgrymu na ddylai'r broses gymryd fwy na 4 rhyw 4 mlynedd. Mae adolygiad o brofiad awdurdodau cynllunio ar draws Cymru sydd eisoes yn mynd trwy'r broses yn dangos yn glir bod angen neilltuo'r amser a nodwyd yn y CC er mwyn cwblhau'r tasgau mewn dull grymus. Mae'r Rheoliadau'n nodi fod rhaid cynnal ymgynghoriadau cyhoeddus dros gyfnod o 6 wythnos/ The guidance published by the Welsh Government suggests that the process should not take more than about 4 years. Review

Atodiad/ Appendix 1
Ymateb i'r ymgynghoriad/ Response to consultation

	of progress made by local authorities across Wales who are already going through the process clearly shows that the timetable included in the DA is required in order to complete the tasks robustly
Diwygiad a awgrymir/ Suggested modification	Dim yn berthnasol/ Not applicable
Sylwebydd(ion)/ Respondent	Cyngor Cymuned Llanystumdwy Community Council
Sylw(adau)/ Comment(s)	Nodir cyfeiriad at "adnabod y sail dystiolaeth yng nghyswllt nodweddion cymdeithasol, economaidd ac amgylcheddol yr ardal" ac yn awgrymu y dylid ychwanegu " ieithyddol" at y rhestr hon/ Notes the reference to identifying the evidence base in terms of the social, economic and environmental characteristics of the area. .
Ymateb Swyddog/ Officer Response	Bydd yr agwedd cymdeithasol o Adroddiad Sgopio'r CDLI ar y cyd yn adnabod materion ieithyddol a diwylliannol/ Linguistic and cultural matters will be covered by the social theme included in the Scoping Report of the JLDP
Diwygiad a awgrymir/ Suggested modification	Dim yn berthnasol/ Not applicable

Cwestiwn 2b A oes yna risgiau ychwanegol i'r rhai sydd yn y CC Drafft i baratoi'r CDLI ar y Cyd?/ Are there additional risks to the delivery of the Joint LDP besides those set out in the Draft DA?

Sylwebydd(ion)/ Respondent	Grwp Bae Hirael
Sylw(adau)/ Comment(s)	<p>(1) Nid yw'n glir sut caiff materion gwrthdaro difrifol (e.e. pŵer niwclear) eu datrys/ It is not clear how serious conflict issues (e.g. nuclear power) get resolved.</p> <p>(2) Mae yna amheuaeth os ydy o'n ddigon grymus i gyd-fynd ag amcanion Llywodraeth Cymru i leihau allyriadau carbon o 3% pob blwyddyn/ There are doubts whether it is robust enough to fit in with WAG aim of cutting carbon emissions 3% annually</p>
Ymateb Swyddog/ Officer Response	(1) Mae Atodiad 6 o'r Cytundeb Cyflawni'n cyfeirio at y risgiau all godi oherwydd diffyg cytundeb ynglyn a rhai

Atodiad/ Appendix 1
Ymateb i'r ymgynghoriad/ Response to consultation

	<p>materion, h.y. barn gwahanol gan gyrff ymgynghori, barn wleidyddol wahanol yn ogystal a barn wahanol gan wasanaethau o fewn y Cynghorau, yn ogystal amesurau i leihau'r risgiau hynny rhag codi ac effeithiau'r risgiau yma. Yn ddibynol ar ba gyfnod mae'r CDLL ar y Cyd arno, caiff y penderfyniad ynglyn ag ymagwedd y Cynllun i wahanol faterion ei gymeryd gan Bwrdd Comisiynwyr/ Pwyllgor Gwaith Cyngor Sir Ynys Môn a Bwrdd Cyngor Gwynedd, neu'r Pwyllgor Polisi Cynllunio ar y Cyd, ar ol iddynt roi ystyriaeth i unrhyw farn croes gan fudd-ddeiliaid. Mae paragraff 4.1.1 ac Atodiad 4 y Cytundeb Cyflawni yn cyfeirio at rol genwud penderfyniad y pwyllgorau. Gellir diwygio paragraff 4.1.1 i gyfeirio at rol y pwyllgorau o ran delio gyda barn gwahanol. / Appendix 6 of the Delivery Agreement refers to risks that arise from a possible lack of consensus about issues, i.e. conflicting views expressed by consultation bodies, conflicting political views as well as conflicting views expressed by different services within the Councils, as well as measures to reduce such risks arising or the effects of the risks. Depending on which stage the JLDP has reached, having considered any opposing views expressed by stakeholders, the decision regarding the Plan's approach to different issues will be determined by either Anglesey County Council's Board of Commissioners/ Executive Committee and Gwynedd Council's Board, or the Joint Planning Policy Committee. Paragraph 4.1.1 and Appendix 4 of the Agreement refer to decision making roles of committees. Paragraph 4.1.1 could be amended to refer to the committees' role in terms of dealing with opposing views.</p> <p>(2) Dogfen brosiect yw'r Cytundeb Cyflawni sy'n rhoi'r amserlen a'r gyfer paratoi'r CDLL ar y Cyd yn ogystal a dweud sut a phryd caiff y cyhoedd ac eraill gymryd rhan yn y broses. Nid oes disgwyliad iddo gynnig atebion i'r materion sy'n bwysig yn yr ardal./ The Delivery agreement is a project document that sets out the timetable for preparing the JLDP as well as how and when the public and others can take part in the process. There is no requirement for it to set out the response to the issues that are locally important.</p>
<p>Diwygiad a awgrymir/ Suggested modification</p>	<p>(1) Diwygio paragraff 4.1.1 yn unol a'r hyn a welir isod/ Amend paragraph 4.1.1 in accordance with the text shown below:</p> <p>“Ar ol ystyried yr holl dystiolaeth cyfrifoldeb Pwyllgor Gwaith/ Bwrdd Comisiynwyr Cyngor Sir Ynys Môn a Bwrdd Cyngor Gwynedd fydd gwneud penderfyniadau</p>

Atodiad/ Appendix 1
Ymateb i'r ymgynghoriad/ Response to consultation

	<p>am gynnwys y dogfennau yn yn gynnar yn y broses o baratoi'r CDLI ar y Cyd, e.e. Cytundeb Cyflawni a'r Dogfennau Cyn-Adneuo. Bydd y Pwyllgor Polisi Cynllunio ar y Cyd yn gwneud penderfyniadau ar sail sytiaeth lawn o ystyriaethau am gynnwys dogfennau ar wahân i'r adegau lle mae angen awdurdod y Cynghorau llawn fel rhan o'r broses statudol. Mae'r tabl yn Atodiad 4 yn adnabod beth yw rol y gwahanol bwyllgorau.</p> <p>/ "Having considered all the relevant evidence, including opposing views expressed by different stakeholders, it will be the responsibility of the Anglesey Council Board of Commissioners/ Executive Committee and Gwynedd Council's Board to make decisions about the content of documents early in the process of preparing the Joint LDP, i.e. the Delivery Agreement and the Pre-deposit Documents. The Joint Planning Committee will then make similarly informed decisions about the content of documents at other stages in the Plan preparation process, except where the authority of the full Councils is a statutory requirement. The table in Appendix 4 identifies the role of the various committees."</p> <p>(2) Dim diwygiad/ no modification</p>

Cwestiwn/ Question 3a Ydy'r Cynllun Cyfranogiad Cyhoeddus yn glir o ran sut a phryd y gallwch chi neu eich mudiad gymryd rhan yn y broses?/ Does the Community Involvement Scheme make it clear how and when you or organisation can get involved?

Sylwebydd(ion)/ Respondent	CTC – Gwynedd & Mon/ Anglesey
Sylw(adau)/ Comment(s)	Fe ddylai CTC fod ar y rhestr o ymgynghorwyr/ CTC should be on the list of consultees
Ymateb Swyddog/ Officer Response	Diwygio'r Atodiad trwy ychwanegu CTC i'r rhestr o'r cyrff ymgynghori cyffredinol/ Modify the Appendix by adding CTC to the list of general consultation bodies.
Diwygiad a awgrymir/ Suggested modification	Cynnwys CTC yn y rhestr yn Atodiad 7/ Include CTC in the list in Appendix 7

Cwestiwn/ Question 3b A ydych yn meddwl fod y dulliau cyfranogiad sydd yn y CCC yn rhai priodol? Do you consider that the methods of involvement identified in the CIS are appropriate?

Atodiad/ Appendix 1
Ymateb i'r ymgynghoriad/ Response to consultation

Sylwebydd(ion)/ Respondent	Grwp Bae Hirael
Sylw(adau)/ Comment(s)	Peidiwch a chymryd yn ganiataol bod pawb yn defnyddio cyfrifiaduron. Defnyddiwch rwydweithiau eraill, e.e. NGOs, cyflogwyr, Prifysgol Bangor/ Do not assume that everyone uses computers. Make use of other networks, e.g. NGOs, employers, Bangor University.
Ymateb Swyddog/ Officer Response	<p>Mae'r Cynghorau'n awyddus i gydweithio'n agos gyda cyn gymaint o unigolion, mudiadau a chyrff ag sy'n bosib. Fodd bynnag mae'n rhaid bod yn ymarferol ac yn realistig. Mae rhan 6.5.1 o'r CC yn cyfeirio at nifer o ddulliau ellir eu defnyddio i weithio'n agos a gwahanol fudd-ddeiliad. Bwriedir defnyddio'r dulliau sydd fwyaf addas i'r gynulleidfa, pwnc a'r cam yn y broses. Mae rhan 6.5.2 yn cyfeirio at wneud defnydd o rwydweithiau sefydledig presennol ac mae Atodiad 7 yn cynnwys rhestr o'r mudiadau a chyrff sy'n wybyddus. Bydd yr Uned Polisi Cynllunio ar y Cyd yn cysylltu ag Unedau/ Gwasanaethau eraill o fewn y Cynghorau yn ogystal a phartneriaid eraill sy'n arbenigo mewn meysydd penodol cyn rhyddhau'r CC trefynol a thrwy gydol y broses o baratoi'r CDLI ar y Cyd er mwyn ceisio sicrhau bod budd-ddeiliaid perthnasol yn cael eu hadnabod./ The Councils are keen to engage with as many individuals, organisations and bodies as possible. However, we must be practical and realistic. Section 6.5.1 of the DA refers to a number of methods that can be used to engage with different stakeholders. The intention is to use the methods that are the most appropriate to the audience, topic and the stage in the process. Section 6.5.2 refers to the use of existing established networks and Appendix 7 of the DA will include a list of known organisations and bodies that can be described at general consultation bodies. The Joint Planning Policy Unit will contact other Units/ Services within the Councils that specialise in specific topics prior to the release of the final DA and throughout the JLDP process to try to ensure that relevant stakeholders are identified.</p>
Diwygiad a awgrymir/ Suggested modification	Ychwanegu at y rhestr o gyrff ymgynghori cyhoeddus ar ol cysylltu gydag Unedau/ Gwasanaethau eraill yn y Cynghorau/ Add to the list of general consultation bodies post consultation with the Councils' other Units/ Services
Sylwebydd(ion)/ Respondent	Envirowatch UK

Atodiad/ Appendix 1
Ymateb i'r ymgynghoriad/ Response to consultation

Sylw(adau)/ Comment(s)	Yn gefnogol i'r bwriad o gysylltu a phlant a phobl ifanc/ Support the intention to engage with children and young people.
Ymateb Swyddog/ Officer Response	Croesawu'r gefnogaeth/ welcome the support.
Diwygiad a awgrymir/ Suggested modification	Dim yn berthnasol/ Not applicable

Sylwebydd(ion)/ Respondent	Cyngor Cymuned Llanystumdwy Community Council
Sylw(adau)/ Comment(s)	Yn awgrymu y dylid sicrhau bod llais cryf gan deuluoedd ifanc lleol sy'n methu fforddio prynu tai/ methu â chael tŷ a hwythau yn aros yn eu cynefinoedd/ Suggests that a strong voice should be given to young families that cannot afford to purchase houses/ access houses to stay in their locality Yn holi os ydy "papurau cymunedol" yn cynnwys papurau bro/ Enquiring as to whether "community papers" include area papers.
Ymateb Swyddog/ Officer Response	Ydy/ Yes
Diwygiad a awgrymir/ Suggested modification	Dim yn berthnasol/ Not applicable

Cwestiwn/ Question 3c Ydy'n glir pa gyfraniad allwch chi wneud neu sy'n ddisgwyliedig gennych?/ Is it clear what contribution you can or are expected to make?

Sylwebydd(ion)/ Respondent	CTC – Gwynedd & Mon/ Anglesey
Sylw(adau)/ Comment(s)	Rydym yn croesawu'r cyfeiriad i gludiant, diogelwch, iechyd, cynaladwyedd ac i waharddiad cymdeithasol. Fe all CTC gyfrannu i hyn i gyd/ We welcome the reference to transport/ to safety, to health, to sustainability, and to social exclusion. CTC can contribute to all of these.
Ymateb Swyddog/ Officer Response	Diwygio'r Atodiad trwy ychwanegu CTC i'r rhestr o'r cyrff ymgynghori cyffredinol/ Modify the Appendix by adding CTC to the list of general consultation bodies.

Atodiad/ Appendix 1
Ymateb i'r ymgynghoriad/ Response to consultation

Diwygiad a awgrymir/ Suggested modification	Cynnwys CTC yn y rhestr yn Atodiad 7/ Include CTC in the list in Appendix 7
--	---

Cwestiwn/ Question 3ch A ydych yn gwybod am gyrff statudol, penodol neu gyffredin ychwanegol i'r rhai sydd yn y CC drafft?/ Can you identify any additional statutory, specific or general consultation bodies to those listed in the draft DA?

Sylwebydd(ion)/ Respondent	CTC – Gwynedd & Mon/ Anglesey
Sylw(adau)/ Comment(s)	Cynnwys/ Include CTC
Ymateb Swyddog/ Officer Response	Diwygio'r Atodiad trwy ychwanegu CTC i'r rhestr o'r cyrff ymgynghori cyffredinol/ Modify the Appendix by adding CTC to the list of general consultation bodies.
Diwygiad a awgrymir/ Suggested modification	Gweler Atodiad 7 i'r Cytundeb Cyflawni/ See Appendix 7 to the Delivery Agreement
Sylwebydd(ion)/ Respondent	Grwp Bae Hirael
Sylw(adau)/ Comment(s)	Ychwanegu'r canlynol i'r rhestr o'r rhai a ymgynghorir a hwy / Add the following to the list of consultees: CTC Sustrans RSPB N W Wildlife Trust Ramblers Association Friends of the Earth Transition Town Bangor Rail and Bus User Group Grwp Bae Hirael
Ymateb Swyddog/ Officer Response	Cynnwys yr uchod yn Atodiad 7 / Include the above in Appendix 7.
Diwygiad a awgrymir/ Suggested modification	Gweler Atodiad 7 i'r Cytundeb Cyflawni/ See Appendix 7 to the Delivery Agreement

Sylwebydd(ion)/ Respondent	Cartrefi Watkin Jones Homes
-----------------------------------	-----------------------------

Atodiad/ Appendix 1
Ymateb i'r ymgynghoriad/ Response to consultation

Sylw(adau)/ Comment(s)	Ychwanegu'r canlynol i'r rhestr o'r rhai a ymgynghorir a hwy / Add the following to the list of consultees: Chartered Institute of Building – North Wales Centre HBF – Home Builders Federation
Ymateb Swyddog/ Officer Response	Diwygio'r Atodiad trwy ychwanegu'r cyrff a enwir uchod i'r rhestr o'r cyrff ymgynghori cyffredinol/ Modify the Appendix by adding the abovementioned organisations to the list of general consultation bodies.
Diwygiad a awgrymir/ Suggested modification	Cynnwys CTC yn y rhestr yn Atodiad 7/ Include CTC in the list in Appendix 7

Sylwebydd(ion)/ Respondent	SUSTRANS
Sylw(adau)/ Comment(s)	Ychwanegu'r canlynol i'r rhestr o'r rhai a ymgynghorir a hwy / Add the following to the list of consultees: Sustrans Cymru TAITH TRACC
Ymateb Swyddog/ Officer Response	Cynnwys yr uchod yn Atodiad 7/ Include the above in Appendix 7.
Diwygiad a awgrymir/ Suggested modification	Cynnwys CTC yn y rhestr yn Atodiad 8/ Include CTC in the list in Appendix 8

Sylwebydd(ion)/ Respondent	Entec
Sylw(adau)/ Comment(s)	(1) Mae Transco nawr yn rhan o National Grid/ Transco is now part of National Grid (2) Cynnwys cwmnïau dosbarthu nwy a trydan yn yr ardal/ Include the gas and electricity distribution companies for the area: SP Energy Networks and Wales and West Utilities.
Ymateb Swyddog/ Officer Response	Diwygio'r Atodiad yn unol a'r sylw uchod / Modify the Appendix in accordance with the above comment.
Diwygiad a	Dileu cyfeiriad at Transco yn Atodiad 8/ Delete reference

Atodiad/ Appendix 1
Ymateb i'r ymgynghoriad/ Response to consultation

awgrymir/ Suggested modification	to Transco in Appendix 8 Ychwanegu/ Add SP Energy Networks & Wales and West Utilities i Atodiad 8/ to Appendix 8
---	---

3d A ydych yn meddwl fod y Partneriaethau Traws-Asiantaethol priodol wedi cael eu hadnabod er mwyn cael cynllun cynrychiadol?/ Do you consider that the appropriate Multi-Agency Partnerships have been identified to achieve a representative plan?

Sylwebydd(ion)/ Respondent	Grwp Bae Hiracl
Sylw(adau)/ Comment(s)	Fe ddylai mwy o NGOs amgylcheddol a chludiant fod yn rhan o'r broses/ There need to be more environmental and transport NGOs involved
Ymateb Swyddog/ Officer Response	Sicrhau bydd Atodiad 7 yn cynnwys amrediad o fudiadau a chyrrff amgylcheddol a chludiant sy'n weithredol yn yr ardal leol/ Ensure that Appendix 7 includes a range of environmental and transport organisations and bodies that operate in the local area.
Diwygiad a awgrymir/ Suggested modification	Gweler Atodiad 7 i'r Cytundeb Cyflawni/ See Appendix 7 to the Delivery Agreement

4 A oes gennych sylwadau ychwanegol neu awgrymiadau am y Cytundeb Cyflawni Drafft? Do you have any additional comments or suggestions in relation to the draft Delivery Agreement?

Sylwebydd(ion)/ Respondent	Grwp Bae Hiracl
Sylw(adau)/ Comment(s)	(1) More needed on WAG 3% carbon cut, peak oil, rising sea levels, transport and planning, active travel and public health, localism, ensuring investment remains in local area. (2) Include road safety stats on page 31
Ymateb Swyddog/ Officer Response	Rhaid cofio mai dogfen brosiect yw'r Cytundeb Cyflawni sy'n rhoi'r amserlen bras a manwl ar gyfer paratoi'r CDLI ar y Cyd yn ogystal a dweud sut gall budd-ddeiliaid gymryd rhan yn y broses. Tra mae disgwyl i'r ddogfen ddisgrifio'r ardal nid oes angen mynd i fanylder. Cytunnir bod y materion a gyfeirwyd atynt yn rhai sydd angen sylw. Bydd rhagor o fanylion amdanynt yn cael eu cynnwys yn adroddiad sgopio'r

Atodiad/ Appendix 1
Ymateb i'r ymgynghoriad/ Response to consultation

	<p>Arfarniad Cynladwyedd ac mewn Papurau Cefndir a fydd yn ymdrin a phynciau/ themau penodol. Ond, cytuno y gellir diwygio Atodiad 2 i roi gwybodaeth pennawd perthnasol ychwanegol. / It must be remembered that the Delivery Agreement is a project document that provides a broad and detailed timetable for preparing the Joint LDP as well as stating how and when stakeholders can become involved. Whilst it is expected that the document describes the area there is no need to go into detail. It is agreed that the matters referred to should be considered. More information will be included in the SA Scoping Report and in Background Papers that will deal with specific topics/ themes. But it is agreed that Appendix 2 can be amended to include relevant headline information.</p>
Diwygiad a awgrymir/ Suggested modification	Gweler Atodiad 2 i'r Cytundeb Cyflawni/ See Appendix 2 to the Delivery Agreement.

Sylwebydd(ion)/ Respondent	Cartrefi Watkin Jones Homes
Sylw(adau)/ Comment(s)	Mae'r ddogfen drafft yn cyfeirio at Cynulliad a Llywodraeth Cynulliad Cymru mewn sawl man ac fe ddylid diwygio'r rhain i adlewyrchu'r newid diweddar yn yr enw – Llywodraeth Cymru/ The draft document refers to the Assembly and the Welsh Assembly Government in a number of locations and these should be revised to reflect the recent change in name to the Welsh Government.
Ymateb Swyddog/ Officer Response	Cytuno bod angen diwygio'r ddogfen i adlewyrchu newid diweddar.
Diwygiad a awgrymir/ Suggested modification	Sicrhau bod y ddogfen yn cyfeirio at Llywodraeth Cymru yn hytrach na Llywodraeth Cynulliad Cymru/ Ensure that the document refers to the Welsh Government rather than the Welsh Assembly Government.

Sylwebydd(ion)/ Respondent	Fforwm Mynediad Lleol Arfon & Dwyfor Local Access Forum
Sylw(adau)/ Comment(s)	(1) Yn siomedig na chafodd y Fforymau Mynediad Lleol eu cynnwys yn y rhestr o aelodau posib y Grwp Rhanddeiliaid Allweddol. Yn credu'n gryf y dylai'r Fforymau Mynediad Lleol fod yn rhan

Atodiad/ Appendix 1
Ymateb i'r ymgynghoriad/ Response to consultation

	<p>o'r broses yn eu hanfod eu hunain neu trwy gynrychiolaeth ar Baneli Dinasyddion Gwynedd a Mon./ Disappointed that the relevant Local access Forums are not listed under "Possible Membership of Key Stakeholders Group". Strongly feel that the Local access Forums should be involved in this process in their own right or through representation on Gwynedd and Anglesey Citizen Panels.</p> <p>(2) Ni chafodd tabl 5 ei gynnwys yn y ddogfen/ Table 5 was missing from the document.</p> <p>(3) Yn bryderus nad oes ond ychydig o gyfeiriad at faterion mynediad a hawliau tramwy. Credir y dylai'r ddogfen gynnwys cyfeiriadau i'r materion yma a'u pwysigrwydd i iechyd a lles cymunedau lleol ac i economi'r ardal, e.e. ystadegau am werth i dwristiaeth, yn arbennig twristiaeth cerdded, a'r nifer o swyddi mae'r sector yn ei ddarparu./ Concerned there is very little reference made to issues of access and public rights of way. We feel that the document should contain specific references to these issues and their importance to the health and well being of local communities and to the economy of the area, e.g. statistics for the value of tourism, particularly walking based tourism, and the number of jobs which the sector provides.</p> <p>(4) Hoffi gweld amcangyfrifiad da o'r gost o gynhyrchu'r cytundeb yma, yn arbennig cost ymgynghorwyr allanol, ac hefyd amcangyfrifiad cywir o fudd y Cynllun i'r Awdurdodau Lleol/ Would like to see proper estimates of costs of producing this agreement, particularly the cost of external consultants, and likewise accurate estimates of the financial benefits of the Plan to the participating Local Authorities.</p>
<p>Ymateb Swyddog/ Officer Response</p>	<p>(1) Cytuno i gynnwys cynrychiolydd o'r Fforymau Mynediad Lleol ar restr aelodaeth y Grwp Rhanddeiliaid Allweddol a chynnwys enwau y Fforymau Mynediad Lleol i gyd yn Atodiad 7/ Agree to include a representative of the Local Access Forums on the Key Stakeholder Group and include the names of all the Local Access Forums in Appendix 7.</p> <p>(2) Cafodd tabl 5 ei gynnwys ar dudalen 16. Gellir rhoi blwch o gwmpas y geiriau I wella eglurder/ Table 5 was included on page 16. A box can be included around the text to improve clarity.</p>

Atodiad/ Appendix 1
Ymateb i'r ymgynghoriad/ Response to consultation

	<p>(3) Rhaid cofio mai dogfen brosiect yw'r Cytundeb Cyflawni sy'n rhoi'r amserlen bras a manwl ar gyfer paratoi'r CDLI ar y Cyd yn ogystal a dweud sut gall budd-ddeiliaid gymryd rhan yn y broses. Tra mae disgwyl i'r ddogfen ddisgrifio'r ardal nid oes angen mynd i fanylder. Cytunnir bod y materion a gyfeirwyd atynt yn rhai sydd angen sylw. Bydd rhagor o fanylion amdanynt yn cael eu cynnwys yn adroddiad sgopio'r Arfarniad Cynladwyedd ac mewn Papurau Cefndir a fydd yn ymdrin a phynciau/ themau penodol. Ond, cytuno y gellir diwygio Atodiad 2 i roi gwybodaeth pennawd perthnasol ychwanegol. / It must be remembered that the Delivery Agreement is a project document that provides a broad and detailed timetable for preparing the Joint LDP as well as stating how and when stakeholders can become involved. Whilst it is expected that the document describes the area there is no need to go into detail. It is agreed that the matters referred to should be considered. More information will be included in the SA Scoping Report and in Background Papers that will deal with specific topics/ themes. But it is agreed that Appendix 2 can be amended to include relevant headline information.</p> <p>(4) Cafodd y Cytundeb Cyflawni ei baratoi yn unol a'r Rheoliadau perthnasol a llawlyfr Llywodraeth Cymru. Ni does angen rhoi manylion am y gost o baratoi'r Cytundeb. Ni ddefnyddiwyd ymgynghorwyr allanol i'w baratoi. Mae'n bosib iawn y bydd rhaid ychwanegu at gapasiti'r Cynghorau i wella'u dealltwriaeth o rai pynciau neu agweddau ohonynt. Mae'n bwysig bod adnoddau'n cael eu rhoi o'r neilltu ar gyfer hynny. Mae'r Cytundeb Cyflawni yn nodi faint sydd wedi ei neilltuo ar gyfer comisiynu gwaith allanol os fydd angen gwneud hynny. Nid yw'n bosib amcangyfrif gydag unrhyw sicrwydd beth fydd budd ariannol y CDLI ar y Cyd i'r ddau Gyngor ac nid oes disgwyliad yn ol y Rheoliadau na'r llawlyfr i'r Cytundeb Cyflawni wneud hynny./ The Delivery Agreement was prepared in accordance with the Regulations and the Welsh Government's handbook. There is no requirement to provide details relating to the cost of preparing the Agreement. No external consultants were used to prepare it. There may be instances that the Council's capacity may need to be increased in order to better understand some topics or aspects</p>
--	---

Atodiad/ Appendix 1
Ymateb i'r ymgynghoriad/ Response to consultation

	<p>of them. It is important that sufficient resources are set aside for commissioning external consultants. The Delivery Agreement identifies how much has been set aside if this is required. It isn't possible to estimate with any degree of accuracy what economic benefits will be derived from the Joint LDP to both Councils and there is no requirement to do so according to the Regulations and the handbook.</p>
Diwygiad a awgrymir/ Suggested modification	Gweler Atodiad 2 i'r Cytundeb Cyflawni a'r newidiadau golygyddol/ See Appendix 2 to the Delivery Agreement and the editorial changes
Sylwebydd(ion)/ Respondent	SUSTRANS
Sylw(adau)/ Comment(s)	<p>Pryder mai dim ond unwaith cyfeirir at gludiant yn y cytundeb cyflawni drafft. Caiff y CDLl ar y Cyd effaith ar gludiant ac fe ddylid rhoi sylw i hyn yn fuan yn y broses/ Concern that there is only one reference to transport in the draft delivery agreement. The JLDP will have an effect on transport and this should be considered at an early stage.</p>
Ymateb Swyddog/ Officer Response	<p>Nid oes disgwyl i'r Cytundeb fynd i ormod o fanylder ynglyn a'r materion sy'n bwysig yn lleol. Bydd mwy o fanylion yn cael ei gynnwys yn yr Adroddiad Sgopio i'r Arfarniad Cynladwyedd ac mewn papurau cefndir am feysydd penodol. Bydd yr rhain a thrafodaethau gyda budd-ddeiliaid yn eu tro'n dylanwadu ar gynnwys y CDLL ar y Cyd / The Agreement should not go into detail regarding matters that are important locally. More information will be provided in the Sustainability Scoping Report and in background papers about specific topics. These and discussions with stakeholders will in turn influence the contents of the JLDP</p>
Diwygiad a awgrymir/ Suggested modification	Dim diwygiad/ No modification

Sylwebydd(ion)/ Respondent	Asiantaeth Amgylchedd Cymru
Sylw(adau)/ Comment(s)	<p>Yn croesawu'r bwriad i gyflawni Asesiad Canlyniadau Llifogydd Strategol, fel y nodir yn Nhabl 5 o'r Cytundeb Cyflawni Drafft. Hefyd croesawn ein bod wedi nodi fel Corff Ymgynghorol Pendant yn Atodiad 8. Sut bynnag, awgrymwn weld risg llifogydd wedi ei nodi fel Ffaith a</p>

Atodiad/ Appendix 1
Ymateb i'r ymgynghoriad/ Response to consultation

	Figwr Strategol Allweddol o fewn Atodiad 2, oherwydd bydd hyn yn pwysicach pan cymeryd newid hinsawdd mewn i ystyriaeth yn y dyfodol./ welcome the intention to draw up a Strategic Flood Consequences Assessment as noted in Table 5 of the Draft Delivery Agreement, and that we are noted as a specific consultation body in Appendix 8. However, we would recommend the inclusion of flood risk as a Key Strategic Fact and Figure within Appendix 2, as this will become increasingly more important when taking climate change into account.
Ymateb Swyddog/ Officer Response	Cytuno gyda'r sylw/ Agree with the comment
Diwygiad a awgrymir/ Suggested modification	Cynnwys cyfeiriad at y mater a godwyd yn Atodiad 2/ Include reference to the matter raised in Appendix 2

Derbyniwyd sylwadau cyffredinol o gefnogaeth i gynnwys y CC gan y canlynol/
General comments of support were received from the following:

Cyngor Cymuned Llanengan Community Council
The Coal Authority

Delivery Agreement compliance with Welsh Government Assessment Criteria

TIMETABLE

Is it easy for the public to understand?

Yes, the timing of each critical stage of the JLDP process is clearly set out in Table 6 in the DA. More detailed definitive and indicative timetables are set out in Appendix 3

Are the main LDP process components covered?

Yes, see above.

Have the impacts of LA processes for approval (e.g. Cabinet cycles) been incorporated?

Yes, the Timetable has been drawn up taking account of the known cycles and timing of each Council's Scrutiny Committee, Executive Committee and Full Council meetings. The meetings of the Joint Planning Policy Committee have been scheduled to facilitate the decision making process.

How will the Planning Committee be involved?

Given the decision to prepare a Joint Local Development Plan, a Joint Planning Policy Committee has been established to simplify/ streamline the decision making process, to monitor and review the progress made throughout the plan making process, and to make decisions about the Joint Local Development Plan's contents, unless each Council's endorsement is a statutory requirement. Section 6.7 and Appendix 3 of the DA sets out how all Councillors will have an opportunity to discuss key matters.

Is there sufficient time for involving the community at the right stages?

Yes, the timetable set out in table 6 and Appendix 3 gives sufficient time for involving the community at the relevant stages.

Have the SA/SEA tasks being identified and included?

Yes. The keys stages have been identified in the SA/SEA process and are set out in Appendix 3.

Have the resources needed for each stage/task been estimated?

Yes, the resources estimated to be required in terms of staff and expenditure are set out in sections 3.1 and 3.2 and in the last column included in Appendix 3 of the DA.

APPENDIX 3

Have the impact and resource sharing potential of other LA policy and strategy cycles been considered?

Yes. Details of the intention to utilise existing networks and partnerships that include representatives of other services within the Councils are set out in section 6.5 of the DA.

Is the Planning Inspectorate aware/content?

Preliminary liaison with the Planning Inspectorate has been undertaken.

Is the timetable realistic and deliverable with key milestones set to meet the 4-year target?

The timetable is realistic and deliverable. A time period to work within has been given for each stage and the end of the time period for each critical stage of the LDP process will act as a milestone to reach the end date target. It is anticipated that it will take 4.5 years to adopt the JLDP. This timetable reflects the need to set aside time to hold local elections in May 2012.

If not, what are the extenuating circumstances (e.g. local elections)?

Although it is considered that the timetable is realistic and deliverable, there are potential risks. In addition to the local elections during May 2012, other potential risks are set out in Appendix 6 of the DA

COMMUNITY INVOLVEMENT SCHEME

Is the CIS easy for the public, voluntary organisations and businesses to relate to?

Yes, each of the critical stages and those to be involved is clearly set out in Appendix 3. Section 6.3 clearly identifies the target audiences. Appendix 7 sets out which groups are included on the Councils' current database and provides an opportunity for anyone to draw attention to other stakeholders.

Does it set out clearly the authority's approach and standards for involvement and how these link to other relevant local consultation approaches?

The Councils' approach and standards for involvement are set out within Section 6.2 of the DA.

Does this approach meet the Assembly's principles?

Yes, table 7 in section 6.2 and section 6.11 set out how the Councils intend to meet all the key principles of early involvement and feedback, encouraging the commitment of all participants to search for a consensus and adopting approaches to engage all sections of the community.

APPENDIX 3

Are the statutory consultation periods and consultee organisations included?

Yes, statutory periods and consultee organisations have been included in the CIS where appropriate (see Appendix 3, 7 & 8)

What has been the involvement of those affected in drawing up the CIS?

Information about the first draft of the DA, including the CIS, was provided to all organisations detailed in Appendix 7 & 8 and all stakeholders on the register of interested parties held by the Councils. An opportunity was given to the aforementioned as well as any other interested party to submit comments. Responses to this will be summarised in an appendix to the final DA.

Does the CIS include relevant stakeholder groups, given the nature of the authority's area?

Yes. The relevant known stakeholder groups are those listed in Appendix 7 & 8. These are considered to reflect the appropriate groups and interests for the purposes of the preparation of the JLDP. Exclusion from the current register does not preclude a new group's inclusion at a future date.

Is it clear about the type of involvement proposed for each relevant stage and task, and do these techniques/processes appear appropriate to the task/stage?

Yes. The type of involvement at each stage is clearly set out in Appendix 3. The types of involvement outlined are considered to be appropriate for each of the stages concerned.

Does the authority demonstrate the ability to resource and manage the processes?

Yes. The resources estimated to be required in terms of staff and expenditure are set out in sections 3.1 and 3.2 of the DA. The Community Involvement Scheme has been drawn up taking account of the resources, both staff and financial, that the Councils have available.

Are there clear roles for Members, Executive and officers?

Yes. The roles of Members and officers are set out in sections 6.7 and 6.8 and Appendix 3 of the DA. Each Council's Executive Committee will be directly involved in the decision making process at the stages up to and including the pre-Deposit stage. The Joint Planning Policy Committee will take relevant decisions during the post pre-Deposit stage.

Is there a means of establishing a representative cross-section of views?

Yes, a variety of organisations as outlined in Appendix 7 and 8 will be involved in the process. In addition, it is intended that a Key Stakeholder Group will be established, and

APPENDIX 3

that the Gwynedd Citizens Panel be used as representative “control groups” (see section 6.5, Appendix 3 and Appendix 9 of the DA)

Is it clear what is expected from participants at each stage?

Yes. This is stated clearly in section 6.11 of the Delivery Agreement.

Does it show how the output from community involvement in each stage/task will be communicated to participants and interested parties (feedback mechanisms)?

Yes, this is detailed in Appendix 3

Is it clear how the output will be transparently recorded as influencing the plan and SA/SEA?

Yes, this is clearly stated in Appendix 3.

Does it indicate how the authority will monitor (and change) the CIS?

Yes, this is set out, with details of the monitoring and review of the whole Delivery Agreement, in section 5.1

CONDUCTING AN EQUALITY IMPACT ASSESSMENT

DRAFT DELIVERY AGREEMENT FOR THE ANGLESEY AND GWYNEDD
JOINT LOCAL DEVELOPMENT PLAN

1) AUTHOR(S) OF THE ASSESSMENT

Nia H Davies, Planning Manager (Policy) Joint Planning Policy Unit Anglesey and Gwynedd

2) PARTNERS

Note all the individuals and groups who need to be included in the assessment process: These could include front line staff, partner organisations, specialist organisations etc.

JLDP Key Stakeholder Group that will include representatives of the local partnerships, which represent equalities target groups (i.e. an individual's gender, disability, age, ethnicity, sexual orientation, belief and faith); Equalities Impact Assessment Group, i.e. representatives of the local equalities forums and Gwynedd and Anglesey County Council's Equalities Officers; Local and national groups that represent the welfare of races, ethnicity or nationality; various religious groups; the welfare of disabled individuals (see Appendix 7 of the Delivery Agreement)

3) START DATE

14th April 2011 (i.e. the 1st day in the public consultation period about the Delivery Agreement)

4) END DATE

17th June 2011

5) RELEVANCE

You should outline what relevance the policy/ service/ procedure has in relation to each of the general equality duties and to each of the equality groups. There may not be a relevance to all categories, but if any are noted, then you will need to complete the assessment

5a) Relevance to the General Duties

- **Positively promoting equality**

The Delivery Agreement, via its Community Involvement Scheme, sets out the Councils' intention to contact and consult with the public, including members of the community that are usually hard to reach, and groups and organisations that represent the welfare of racial groups, ethnicity or

nationality; various religious groups; the welfare of disabled individuals.

- **Getting rid of illegal discrimination, harassment and victimisation**

Extensive consultation will reduce the risk of any discriminatory arrangements

- **Promoting equal opportunities**

By adhering to the Delivery Agreement it will be possible to draw up new land use planning policies that respond well to the needs of individual communities.

- **Encouraging good relationships**

The Delivery Agreement aims to secure that communities and stakeholders have every opportunity to take part from the outset in the process of preparing the Joint LDP.

5b) Relevance to equality groups

The issues and trends referred to in Part 2.1 and in appendix 2 of the Delivery Agreement is unlikely to affect everyone equally. The JLDP can potentially have an impact on all the equalities groups listed below. For example, evidence suggests that minority racial groups, women, disabled individuals, children and young people and the elderly are more likely to suffer poverty and social exclusion compared to other groups. Another example of inequality in terms of effect is fuel poverty, which seems to be more prevalent in fragile households, e.g. those occupied by an elderly person, child or a disabled person. The JLDP's strategy and policies could have a detrimental impact or discriminate against different groups in the community or make a positive contribution to equalities. Working with representatives of groups in accordance with what is set out in the Delivery Agreement will help to identify the important issues early on in the process

- **Race**

- **Sex** (include transsexual, maternity and pregnancy issues)

- **Disability**

- **The Welsh language**
- **Sexual Orientation**
- **Religion or belief**
- **Age**

6) AIMS AND OBJECTIVES OF THE POLICY/ SERVICE/ PROCEDURE

Note the reason for the policy and what the Authority aims to achieve through it

Gwynedd Council and Anglesey County Council must prepare a LDP. The JLDP will focus on land use planning matters that are specifically important to the local area. The intention is that the JLDP's strategy and policies will be based on a thorough understanding of the area's needs, opportunities and constraints. The Delivery Agreement's purpose is to provide information about the timetable for preparing the JLDP as well as setting out who the Councils intend to contact, when and how the public and others can contribute to the process and the contents of the JLDP, as well as what happens to the responses. The partnerships, bodies and organisations that represent the equalities groups have been identified in the Delivery Agreement. However, it isn't clear whether the JLDP will be subject to an EIA.

7) INVOLVEMENT AND CONSULTATION

What involvement and consultation exercises were conducted in relation to the policy/ service/ procedure and what were the outcomes?

Individuals that are registered on the JLDP's database and the General and Specific Consultation Bodies were contacted – see Appendix 7 & 8 of the Delivery Agreement to see their names.

According to the Delivery Agreement the above will receive updates about the JLDP process at key stages. The representatives of the partnership and organisations that work on behalf of the equalities groups will receive an invitation to contribute to and influence the contents of the JLDP – see Appendix 3 and 9 of the Delivery Agreement

8) AVAILABLE EVIDENCE

Evidence can be based on local or national data, on consultation, monitoring, staff comments etc.

Section 2.1 and appendix 2 of the Delivery Agreement provide a description of the area as well as key strategic facts and figures.

There is a close relationship between the Sustainability Appraisal, which incorporates the Strategic Environmental Assessment, and the EIA. The Scoping Report that will form part of the Sustainability Report will provide the baseline information that will help to identify the relevant sustainability objectives. Some of these objectives will relate to the equality strands.

The Councils are in the process of preparing Strategic Equalities Plans in accordance with the 2010 Equalities Act. As part of this process, they will be collecting evidence about both County's equality needs in order to identify equalities objectives. This evidence can also contribute to the development of the JLDP.

9) EVIDENCE GAPS

Note any evidence gaps and how these will be filled.

In order to undertake a EIA of the JLDP the relevant baseline information will have to be formally identified.

10) WHAT IS THE ACTUAL/ LIKELY IMPACT?

10 a) On equality groups

See the response to 5a, 5b a 6 above.

- **Race**

We will consult with local groups that represent minority ethnic groups (see Appendix 7)

In order to secure engagement, we shall consider producing information in languages other than Welsh and English, in accordance with specific needs that may arise.

- **Sex**

We will ensure input from women and men. We do not currently have specific contact with transgender groups, but it is anticipated that contact will be made during the process of preparing Statutory Equalities Plans. This group's views will be considered in accordance with developments

- **Disability**

We shall consult with local groups that represent disabled individuals (see Appendix 7).

We shall ensure that our contact with disabled individuals is accessible and appropriate. We shall provide materials and communication methods using alternative formats e.g. BSL, audio tapes, easy to read versions, etc) in accordance with need

- **The Welsh language**

We shall consult with local groups that represent the well-being of the Welsh language (see Appendix 7)

Anyone can contribute to the process in Welsh or English

- **Sexual orientation**

We shall consult with local groups that represent gay, lesbian or bisexual people (see Appendix 7)

- **Religion and belief**

We shall consult with different faith groups (see appendix 70, ensuring that our arrangements are not inimical with cultural or spiritual needs (e.g. respect holy days and holidays)

- **Age**

We shall consult with local groups that represent different age groups (see Appendix 7)

10b) The general duties

See response at 5a, 5b and 6 above

By following the arrangements set out in the Delivery agreement and the Equalities Impact Assessment we are confident that the process will conform to the General Duties set out in the Equalities Act 2010, i.e.

- **Positively promoting equality**

- **Getting rid of illegal discrimination, harassment and victimisation**

- **Promoting equal opportunities**

- **Encouraging good relationships**

11) ADDRESSING THE IMPACT

(More than one result may be relevant)

Outcome 1: No great change

The Assessment shows that by operating in accordance with the requirements of the Delivery Agreement the process of preparing the JLDP will be inclusive, i.e. there shouldn't be a potential to discriminate in terms of getting input into the process. Every effort is made to promote equalities and this will ensure that the JLDP will be based on a thorough understanding of the area's needs, constraints and opportunities.

12) MONITORING AND REVIEWING ARRANGEMENTS

As part of the work of preparing the JLDP we shall have to publish a document that sets out how we have engaged with communities and other stakeholders and what transpired from these discussions. We shall have to monitor who will be providing an input in order to try to ensure that the equalities groups take advantage of the opportunities available to influence the JLDP

13) ACTION PLAN

An action plan, outlining the actions, responsibilities, timescale and review and evaluation processes should be appended.

Actions	Responsibility	Timetable	Monitor and evaluate
Further discussions with the Strategic Direction unit (Gwynedd Council) and the Corporate Policy Unit (Anglesey) about how we can adapt the EIA (if required)/ apply the EIA toolkit to the key stages in the	Joint Planning Policy Unit	2011	Agreement on the EIA toolkit to be applied to the JLDP

JLDP preparation e.g. identify growth and distribution options, formulating strategic policies			
Establish an EIA Panel to help the Joint Planning Policy Unit to undertake an EIA of the JLDP at key stages	Joint Planning Policy Unit	2011	The Panel meets at relevant stages between 2011 and 2014/5

14) DECISION MAKING

--