



Cwricwlwm i Gymru

**Crefydd,
Gwerthoedd a
Moeseq**



Curriculum for Wales

**Religion, Values
and Ethics**

[Click for Slide Notes](#)

Uywodraeth Cymru
Welsh Government

ADDYSG CYMRU
EDUCATION WALES

English

Hwb

Dewislen Mewngofnodi Cofrestru

Hafan > Cwricwlwm i Gymru

Cwricwlwm i Gymru

Dechrau arni

Cyflwyniad i ganllawiau Curriculum i Gymru

Crynodeb o'r ddeddfwriaeth

Cynllunio'ch cwricwlwm

Uywodraeth Cymru
Welsh Government

ADDYSG CYMRU
EDUCATION WALES

Cymraeg

Hwb

Menu Log in Sign up

Home > Curriculum for Wales

Curriculum for Wales

Getting started

Introduction to Curriculum for Wales guidance

Summary of legislation

Designing your curriculum

Uywodraeth Cymru
Welsh Government

ADDYSG CYMRU
EDUCATION WALES

English

Hwb

Dewislen Mewngofnodi Cofrestru

Hafan > Cwricwlwm i Gymru > Crynodeb o'r ddeddfwriaeth

Cwricwlwm i Gymru: crynodeb o'r ddeddfwriaeth

Rhan o [Cwricwlwm i Gymru](#)

CYNNWYS

[Crynodeb o'r ddeddfwriaeth](#)

[Deddf Cwricwlwm ac Asesu \(Cymru\) 2021 – cyflwyniad](#)

[Ysgolion a gynhelir ac ysgolion maethol a gynhelir](#)

Crynodeb o'r ddeddfwriaeth

Nod yr adran hon o ganllawiau fframwaith Cwricwlwm i Gymru yw helpu ysgolion a lleoliadau, yn ogystal ag eraill ym maes addysg sydd â diddordeb, i feithrin dealltwriaeth well o'r gyfraith mewn perthynas â'r Cwricwlwm i Gymru a'r hyn sy'n ofynnol ganddyn nhw.

Uywodraeth Cymru
Welsh Government

ADDYSG CYMRU
EDUCATION WALES

Cymraeg

Hwb

Menu Log in Sign up

Home > Curriculum for Wales > Summary of legislation

Curriculum for Wales: summary of legislation

Part of [Curriculum for Wales](#)

CONTENTS

- [Legislation summary](#)
- [Curriculum and Assessment \(Wales\) Act 2021 – an introduction](#)
- [Maintained schools and maintained nursery schools](#)
- [Funded non-maintained](#)

Legislation summary

This section of the Curriculum for Wales framework guidance is designed to help schools and settings, as well as others in education with an interest, to better understand what the law is for the Curriculum for Wales and what is required of them.

In addition to setting out the legal basis for guidance, it also provides information relating to legal duties and guidance of a statutory nature that

Crefydd, gwerthoedd a moeseg

Statws cyfreithiol y canllawiau ar grefydd, gwerthoedd a moeseg

Mandadol

Mae'r canllawiau ar grefydd, gwerthoedd a moeseg ym Maes y Dyniaethau yn statudol a chânt eu cyhoeddi o dan adran 71 o Ddeddf Cwricwlwm ac Asesu (Cymru) 2021 (y Ddeddf) a bwriedir iddyn nhw helpu'r rhai sy'n gyfrifol o dan y Ddeddf am gynllunio'r maes llafur ar gyfer crefydd, gwerthoedd a moeseg fel rhan o gwricwlwm yr ysgol.

Religion, values and ethics

Legal status of the RVE guidance

Mandatory

The guidance on RVE contained within the Humanities Area is statutory and published under section 71 of the Curriculum and Assessment (Wales) Act 2021 (the Act) and designed to assist those responsible under the Act for designing the RVE syllabus as part of the school curriculum.



Prif Agweddau

- Crefyddau ac argyhoeddiadau athronyddol anghrefyddol
 - Erthygl 2 Protocol 1 i'r Confensiwn Ewropeaidd ar Hawliau Dynol (E2P1)

Main Aspects

- Religious and non-religious philosophical convictions
 - Article 2 Protocol 1 of the European Convention on Human Rights (A2P1)

Prif Agweddau

- Crefyddau ac argyhoeddiadau athronyddol anghrefyddol
 - Erthygl 2 Protocol 1 i'r Confensiwn Ewropeaidd ar Hawliau Dynol (E2P1)
- ~~Yr hawl i dynnu'n ôl ac Crefydd, gwerthoedd a moeseg ôl-16~~

Main Aspects

- Religious and non-religious philosophical convictions
 - Article 2 Protocol 1 of the European Convention on Human Rights (A2P1)
- ~~The right to withdraw and post 16 compulsory RE~~

Prif Agweddau

- Crefyddau ac argyhoeddiadau athronyddol anghrefyddol
 - Erthygl 2 Protocol 1 i'r Confensiwn Ewropeaidd ar Hawliau Dynol (E2P1)
- ~~Yr hawl i dynnu'n ôl ac Crefydd, gwerthoedd a moeseg ôl-16~~
- “Ystyried”
 - Meysydd Llafur Cytunedig
 - Canllawiau ar Grefydd, Gwerthoedd a Moeseg

Main Aspects

- Religious and non-religious philosophical convictions
 - Article 2 Protocol 1 of the European Convention on Human Rights (A2P1)
- ~~The right to withdraw and post 16 compulsory RE~~
- “Have Regard”
 - Agreed Syllabi
 - Religion, values and ethics guidance

Prif Agweddau

- Crefyddau ac argyhoeddiadau athronyddol anghrefyddol
 - Erthygl 2 Protocol 1 i'r Confensiwn Ewropeaidd ar Hawliau Dynol (E2P1)
- ~~Yr hawl i dynnu'n ôl ac Crefydd, gwerthoedd a moeseg ôl-16~~
- “Ystyried”
 - Meysydd Llafur Cytunedig
 - Canllawiau ar Grefydd, Gwerthoedd a Moeseg
- Datblygiad ysbrydol
 - *yn unigolion iach, hyderus sydd â gwerthoedd sicr ac sy'n sefydlu eu credoau ysbrydol ac egwyddorol*
 - Ysbrydol, moesol, cymdeithasol a diwylliannol – Estyn
 - Deddf Cwricwlwm ac Asesu (Cymru) 2021

Main Aspects

- Religious and non-religious philosophical convictions
 - Article 2 Protocol 1 of the European Convention on Human Rights (A2P1)
- ~~The right to withdraw and post 16 compulsory RE~~
- “Have Regard”
 - Agreed Syllabi
 - Religion, values and ethics guidance
- Spiritual development
 - *healthy, confident individuals who have secure values and are establishing their spiritual and ethical beliefs*
 - Spiritual, moral, social and cultural – Estyn
 - Curriculum and Assessment Act (Wales) 2021

Section 59(2) General curriculum requirement

The requirement is that the curriculum is a balanced and broadly based curriculum that -

- (a) promotes the spiritual, moral, cultural, mental and physical development of the pupils and of society, and*
- (b) prepares the pupils for the opportunities, responsibilities and experiences of later life.*

29 Gofynion gweithredu pellach ar gyfer disgyblion 3 i 14 oed

- (1) Rhaid gweithredu'r cwricwlwm mabwysiedig yn unol ag is-adran (2) i ddisgyblion nad ydynt eto wedi cwblhau'r flwyddyn ysgol y mae'r rhan fwyaf o'r disgyblion yn eu dosbarth yn cyrraedd 14 oed ynddi.
- (2) Rhaid gweithredu'r cwricwlwm mabwysiedig mewn ffordd sy'n sicrhau addysgu a dysgu i bob disgybl—
 - (a) sy'n cwmpasu'r meysydd dysgu a phrofiad (gan gynnwys yr elfennau mandadol o fewn y meysydd hynny), a
 - (b) sy'n datblygu'r sgiliau trawsgwricwlaidd mandadol.
- (3) Rhaid i'r addysgu a dysgu a sicrheir o dan is-adran (2)—
 - (a) mewn cysylltiad ag elfen fandadol Addysg Cydberthynas a Rhywioldeb, fod yn addas ar gyfer cyfnod datblygu'r disgybl, a
 - (b) mewn cysylltiad ag elfen fandadol Crefydd, Gwerthoedd a Moeseg, gyd-fynd â Rhan 2 o Atodlen 1, ac eithrio pan fo is-adran (4) yn gymwys.
- (4) Mae'r is-adran hon yn gymwys pan fo'r addysgu a dysgu i ddisgyblion mewn dosbarth y mae'r rhan fwyaf o'r disgyblion ynddo yn iau na'r oedran ysgol gorfodol ar ddechrau'r flwyddyn ysgol.

29 Further implementation requirements for pupils aged 3 to 14

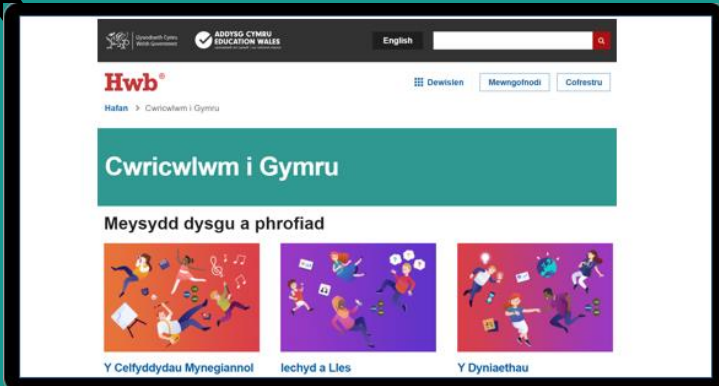
- (1) The adopted curriculum must be implemented in accordance with subsection (2) for pupils who have not yet completed the school year in which the majority of the pupils in their class attain the age of 14.
- (2) The adopted curriculum must be implemented in a way that secures teaching and learning for each pupil that—
 - (a) encompasses the areas of learning and experience (including the mandatory elements within those areas), and
 - (b) develops the mandatory cross-curricular skills.
- (3) The teaching and learning secured under subsection (2)—
 - (a) in respect of the mandatory element of Relationships and Sexuality Education, must be suitable for the pupil's stage of development, and
 - (b) in respect of the mandatory element of Religion, Values and Ethics, must accord with Part 2 of Schedule 1, except where subsection (4) applies.
- (4) This subsection applies where the teaching and learning is for pupils in a class in which the majority of the pupils are below compulsory school age at the beginning of the school year.

30 Gofynion gweithredu pellach ar gyfer disgyblion 14 i 16 oed

- (1) Rhaid gweithredu'r cwricwlwm mabwysiedig yn unol ag is-adran (2) i ddisgyblion sydd wedi cwblhau'r flwyddyn ysgol y cyrhaeddodd y rhan fwyaf o'r disgyblion yn eu dosbarth 14 oed ynddi.
- (2) Rhaid gweithredu'r cwricwlwm mabwysiedig mewn ffordd—
 - (a) sy'n sicrhau addysgu a dysgu i bob disgybl sy'n cwmpasu'r elfennau mandadol o fewn y meysydd dysgu a phrofiad, a
 - (b) sy'n sicrhau addysgu a dysgu arall i bob disgybl ym mhob maes dysgu a phrofiad.
- (3) Rhaid i'r addysgu a dysgu a sicheir o dan is-adran (2) ddatblygu'r sgiliau trawsgwricwlaidd mandadol.
- (4) Rhaid i'r addysgu a dysgu a sicheir o dan is-adran (2) gynnwys—
 - (a) addysgu a dysgu mewn cysylltiad ag unrhyw ddarpariaeth a wneir yn y cwricwlwm, i'r graddau y mae'n gymwys i'r disgybl, yn rhinwedd rheoliadau a wneir o dan adran 25, a
 - (b) yr addysgu a dysgu a ddewisir gan y disgybl yn rhinwedd adran 24.
- (5) Am eithriad i'r ddyletswydd i sicrhau'r addysgu a dysgu a ddewisir gan y disgybl, gweler adran 31.
- (6) Rhaid i'r addysgu a dysgu a sicheir o dan is-adran (2)—
 - (a) mewn cysylltiad ag elfen fandadol Addysg Cydberthynas a Rhywioldeb, fod yn addas ar gyfer cyfnod datblygu'r disgybl, a
 - (b) mewn cysylltiad ag elfen fandadol Crefydd, Gwerthoedd a Moeseg, gyd-fynd â Rhan 2 o Atodlen 1.

30 Further implementation requirements for pupils aged 14 to 16


- (1) The adopted curriculum must be implemented in accordance with subsection (2) for pupils who have completed the school year in which the majority of the pupils in their class attained the age of 14.
- (2) The adopted curriculum must be implemented in a way that—
 - (a) secures teaching and learning for each pupil that encompasses the mandatory elements within the areas of learning and experience, and
 - (b) secures other teaching and learning for each pupil in each area of learning and experience.
- (3) The teaching and learning secured under subsection (2) must develop the mandatory cross-curricular skills.
- (4) The teaching and learning secured under subsection (2) must include—
 - (a) teaching and learning in respect of any provision made in the curriculum, so far as it applies to the pupil, by virtue of regulations made under section 25, and
 - (b) the teaching and learning chosen by the pupil by virtue of section 24.
- (5) For an exception to the duty to secure the teaching and learning chosen by the pupil, see section 31.
- (6) The teaching and learning secured under subsection (2)—
 - (a) in respect of the mandatory element of Relationships and Sexuality Education, must be suitable for the pupil's stage of development, and
 - (b) in respect of the mandatory element of Religion, Values and Ethics, must accord with Part 2 of Schedule 1.



MAES DYSGU A PHROFIAD

Y Dyniaethau

Canllawiau i helpu ysgolion a lleoliadau i ddatblygu eu cwricwlwm eu hunain, gan alluogi dysgwyr i ddatblygu o ran y pedwar diben.




Cynnwys

1. Cyflwyniad
2. Datganiadau o'r hyn sy'n bwysig
3. Egyddorion cynnydd
4. Disgrifiadau dysgu
5. Cynllunio eich cwricwlwm

AREA OF LEARNING AND EXPERIENCE

Humanities

Guidance to help schools and settings develop their own curriculum, enabling learners to develop towards the four purposes.



Contents

1. Introduction
2. Statements of what matters
3. Principles of progression
4. Descriptions of learning
5. Designing your curriculum

5. Cynllunio eich cwricwlwm

CYNNWYS

- Sgiliau trawsgwricwlaidd a sgiliau cyffannol
- Ystyriaethau penodol ar gyfer Maes hwn
- Cysylltiadau allweddol gyda Meysydd eraill
- Themau trawsgwricwlaidd
- Canllawiau ar Grefydd, Gwerthoedd a Moeseg

Canllawiau ar Grefydd, Gwerthoedd a Moeseg

Cyflwyniad

1 Mae Crefydd, Gwerthoedd a Moeseg yn un o ofynion statudol Cwricwlwm i Gymru ac yn orfodol i bob dysgwr rhwng 3 ac 16 oed. Mae Crefydd, Gwerthoedd a Moeseg yn rhan o Faes y Dyniaethau (Maes). Mae'r Maes hwn yn cynnwys daearyddiaeth; hanes; Crefydd, Gwerthoedd a Moeseg; astudiaethau busnes. Mae'r disgyblaethau hyn yn rhannu llawer o'r an themâu, cysyniadau a sgiliau trosglwyddadwy, ac yn cynnwys eu gwybodaeth a'u sgiliau gwahanol eu hunain hefyd.

Nid oes gan rieni hawl i ofyn am gael tynnu eu plentyn yn ôl o addysg Crefydd, Gwerthoedd a Moeseg o fewn Cwricwlwm i Gymru.

Diben y canllawiau hyn ar grefydd, gwerthoedd a moeseg

Cafodd y canllawiau hyn ar Grefydd, Gwerthoedd a Moeseg eu hystrifennu gan ymarferwyr ac arbenigwyr addysg grefyddol er mwyn rhoi cymorth

5. Designing your curriculum

CONTENTS

- Cross-curricular skills and integral skills
- Specific considerations for this Area
- Key links with other Areas
- Cross-cutting themes
- Religion, values and ethics guidance

Religion, values and ethics guidance

Introduction

1 Religion, values and ethics (RVE) is a statutory requirement of the Curriculum for Wales and is mandatory for all learners from ages 3 to 16. RVE forms part of the Humanities Area. This Area encompasses geography; history; religion; values and ethics; business studies. These disciplines share many common themes, concepts and transferable skills, whilst having their own discrete body of knowledge and skills.

There is no parental right to request that a child is withdrawn from RVE in the Curriculum for Wales.

The purpose of this RVE guidance

This RVE guidance has been written by practitioners and religious education experts to provide additional support on how RVE can be taught within the Humanities Area. It emphasises the integral nature of RVE within this Area and

Cynllunio eich cwricwlwm ar gyfer Crefydd, Gwerthoedd a Moeseg

- themâu trawsbynciol
 - sgiliau trawsgwricwlaidd
 - sgiliau sy'n hanfodol i'r pedwar diben
 - Crefydd, Gwerthoedd a Moeseg a'r datganiadau o'r hyn sy'n bwysig
-
- Datblygiad ysbrydol
 - Cysyniadau Crefydd, Gwerthoedd a Moeseg
 - Lens Crefydd, Gwerthoedd a Moeseg



Designing your curriculum for Religion, Values and Ethics

- cross-cutting themes
 - cross-curricular skills
 - skills integral to the four purposes
 - Religion, Values and Ethics and the statements of what matters
-
- Spiritual development
 - Religion, Values and Ethics Concepts
 - The Religion, Values and Ethics lens

Datblygiad ysbrydol

- Hunanymwybyddiaeth mewn perthynas â phobl eraill
 - *meithrin ymdeimlad o'u natur unigryw a'u gwerth*
 - *meithrin cydberthnasau da*
- Cysylltu â'r byd ehangach a'r byd naturiol
 - datblygu gwerthfawrogiad o'r ffaith eu bod yn perthyn i'w hardal leol, i Gymru ac i'r byd ehangach
- Creadigrwydd a mynd y tu hwnt i'r cyffredin
 - gofyn, ystyried a myfyrio ar y cwestiynau eithaf (y cwestiynau 'mawr' ynghylch bywyd)
 - darganfod ystyr a phwrpas yn eu bywydau eu hunain
- Archwilio cwestiynau eithaf ac ystyried ystyr a phwrpas
 - profi'r hyn sydd y tu hwnt i'r cyffredin

Spiritual development

- Awareness of self in relation to others
 - *develop a sense of their uniqueness and value*
 - *form good relationships*
 - *'to live with disappointment'*
- Connections to the wider and the natural world
 - develop an appreciation of belonging in their locality, Wales and the wider world
- Creativity and going beyond the everyday
 - develop creativity and use their imagination
 - experience awe and wonder or be amazed by things
- Exploration of ultimate questions and contemplation of meaning and purpose
 - experience that which is beyond the ordinary

Lens Crefydd, Gwerthoedd a Moeseg

- **Chwilio am ystyr a phwrpas**

Sut mae pobl yn ymateb i gwestiynau dyfnach bywyd er mwyn deall y cyflwr dynol.

- **Y byd naturiol a phethau byw**

Sut a pham mae pobl yn dangos gofal a chyfrifoldeb am y byd ac yn cael eu rhyfeddu gan fyd natur.

- **Hunaniaeth a pherthyn**

Beth sy'n ein gwneud ni yn ni, fel pobl, cymunedau a dinasyddion yn byw mewn byd amrywiol.

- **Awdurdod a dylanwad**

Sut a pham mae gwahanol fathau o awdurdod yn dylanwadu ar fywydau pobl.

- **Cydberthnasau a chyfrifoldeb**

Sut mae pobl yn byw gyda'i gilydd, a pham mae'n bwysig meithrin cydberthnasau iach.

- **Gwerthoedd a moeseg**

Sut a pham mae pobl yn gwneud dewisiadau moesol a sut mae hyn yn dylanwadu ar eu gweithredoedd.

- **Taith bywyd**

Beth mae pobl yn ei brofi fel rhan o daith bywyd, a'r ffordd y caiff y profiadau eu cydnabod.

The RVE lens

- **Search for meaning and purpose**

How people respond to the deeper questions of life in order to understand the human condition.

- **The natural world and living things**

How and why people show concern and responsibility for the world and experience awe and wonder in nature.

- **Identity and belonging**

What makes us who we are as people, communities and citizens living in a diverse world.

- **Authority and influence**

How and why different types of authority influence people's lives.

- **Relationships and responsibility**

How people live together and why developing healthy relationships is important.

- **Values and ethics**

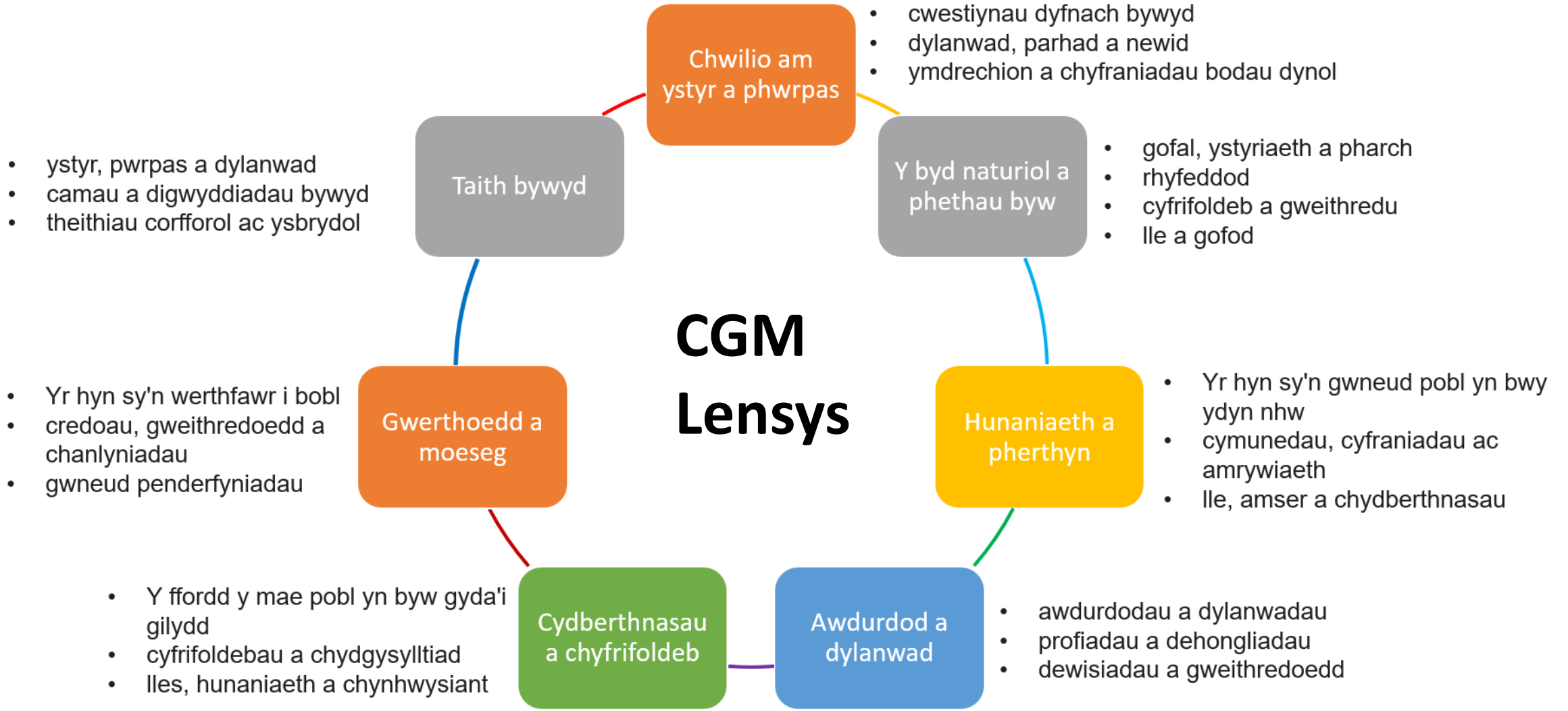
How and why people make moral choices and how this influences their actions.

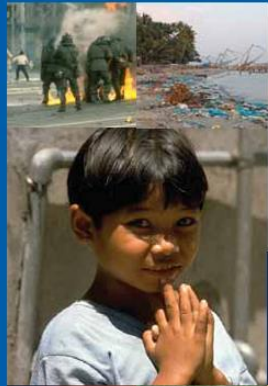
- **The journey of life**

What people experience as part of the journey of life and how these experiences are acknowledged.



CGM Lensys





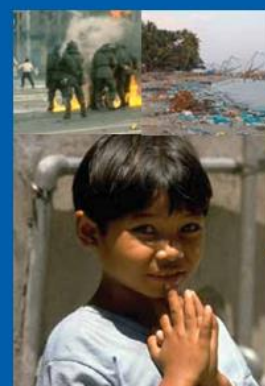
Addysg grefyddol

Canllawiau ar gyfer dysgwyr 14 i 19 oed



Astudiaethau achos yn enghreifftio ystod o ddulliau cyflwyno 16

Addysg grefyddol statudol trwy ddewisiadau arholiad	17
Gwersi addysg grefyddol wedi'u hamserlennu	22
Wythnos drawsgwricwlaidd	28
Rhaglen gyfoethogi drawsgwricwlaidd	31
Rhaglen gyfoethogi'r cwricwlwm ehangach	36
Gwersi tiwtorial y Craidd Dysgu wedi'u hamserlennu	38
Cynhadledd undydd flynyddol	41
Cynhadledd flynyddol i gefnogi dewisiadau arholiad	47
Cymhwyster Bagloriaeth Cymru	49
Sgiliau Allweddol	55
Dyfarniad ASDAN (Rhwydwaith Datblygu ac Achredu Cynllun Dyfarnu)	61
Encilion a chynadleddau	64
Gwaith elusennol ac ymweliadau	66
Defnyddio eclips y BBC <i>Addysg Grefyddol: Addysg Ryfeddol</i>	69
Siart astudiaethau achos enghreifftiol	72



Religious education

Guidance for 14 to 19-year-olds



Case studies exemplifying a range of delivery models 16

Statutory religious education through examination options	17
Timetabled religious education lessons	22
Cross-curricular week	28
Cross-curriculum enrichment programme	31
Wider curriculum enrichment programme	36
Learning Core timetabled tutorial lessons	38
Annual day conference	41
Annual conference to support examination options	47
The Welsh Baccalaureate Qualification	49
Key Skills	55
ASDAN award (Award Scheme Development and Accreditation Network)	61
Retreats and conferences	64
Charity work and visits	66
Using BBC eclips <i>Religious Education: Revitalising Education</i>	69
Exemplar case studies chart	72

Agored Cymru Dyfarniad Lefel 2 mewn Archwilio Bydolygon

Rhif Cymeradwyo/Dynodi CC: [C00/4448/0](#)

Credydau ei hangen: **3**

Cyfanswm amser y cymhwyster (TQT): **30 awr**

Isafswm y credydau ar lefel y cymhwyster neu ar lefel uwch: **3**

Mae'r cymhwyster hwn yn cael ei ystyried yn addas i ddysgwyr o dan 16 oed.

Ffi Safonol ar gyfer y Cymhwyster: **£10.50**

Dyddiad Adolygu: **31/10/2026**

Dyddiad Dechrau Gweithredol: **01/09/2021**

Am y trothwy a phwyntiau perfformiad: [Cliciwch yma](#)

Cymhwyster hwn yn rhan o gyfres lle dyfernir pob cymhwyster trwy bori ar hap. Bydd dysgwyr yn ennill y cymhwyster mwyaf o fewn y gyfres y maent wedi bodloni'r rheolau cyfuno.



Agored Cymru Level 2 Award in Exploring Worldviews

QW Approval/Designation No: [C00/4448/0](#)

Total credits required: **3**

Total qualification time (TQT): **30 hours**

Minimum credits at or above qualification level: **3**

This qualification is classified as suitable for pre-16 learners.

Standard Qualification Fee: **£10.50**

Review date: **31/10/2026**

Operational Start Date: **01/09/2021**

For performance points and threshold: [click here](#)

This qualification is part of a suite where each qualification is awarded serendipitously. Learners will be awarded the largest qualification within the suite for which they have met the rules of combination.

Agored Cymru Dyfarniad Estynedig Lefel 2 mewn Archwilio Bydolygon

Rhif Cymeradwyo/Dynodi CC: [C00/4448/1](#)

Credydau ei hangen: **8**

Cyfanswm amser y cymhwyster (TQT): **80 awr**

Isafswm y credydau ar lefel y cymhwyster neu ar lefel uwch: **5**

Mae'r cymhwyster hwn yn cael ei ystyried yn addas i ddysgwyr o dan 16 oed.

Agored Cymru Level 2 Extended Award in Exploring Worldviews

QW Approval/Designation No: [C00/4448/1](#)

Total credits required: **8**

Total qualification time (TQT): **80 hours**

Minimum credits at or above qualification level: **5**

This qualification is classified as suitable for pre-16 learners.

Standard Qualification Fee: **£28.00**

TGAU ASTUDIAETHAU CREFYDDOL

CRYNODEB O'R ASESU

Uned 1: Credoau, dysgeidiaethau ac arferion crefyddol ac anghrefyddol Arholiad ysgrifenedig: 1 awr 15 munud 30% o'r cymhwyster	60 marc
Cwestiynau sy'n gofyn am ymatebion gwrthrychol, cwestiynau sy'n gofyn am atebion byr ac estynedig.	
Uned 2: Crefydd a pherthnasoedd Asesiad di-arholiad: 6 awr 20% o'r cymhwyster	60 marc
Wedi'i osod gan CBAC, ei farcio gan y ganolfan a'i gymedroli gan CBAC. Bydd yr asesiad yn seiliedig ar un o ddwy thema osod a gosodiad y bydd CBAC yn eu gosod bob blwyddyn. Bydd y thema osod a'r gosodiad ar gael ar wefan Porth CBAC.	
Uned 3: Rolau, hawliau a chyfrifoldebau Arholiad ysgrifenedig: 1 awr 15 munud 30% o'r cymhwyster	60 marc
Cwestiynau sy'n gofyn am ymatebion gwrthrychol, cwestiynau sy'n gofyn am atebion byr ac estynedig.	
Uned 4: Crefydd a hawliau dynol Asesiad di-arholiad: 6 awr 20% o'r cymhwyster	60 marc
Wedi'i osod a'i farcio gan CBAC. Bydd yr asesiad yn seiliedig ar ddau o dri mater hawliau dynol gosod y bydd CBAC yn eu gosod bob blwyddyn. Bydd y materion hawliau dynol ar gael ar wefan Porth CBAC.	

Cymhwyster unedol, di-haen yw hwn.

Ac eithrio Uned 1, sy'n uned ragarweiniol, nid yw trefn cyflwyno'r unedau eraill yn awgrymu unrhyw hierarchaeth.

Bydd yr arholiadau ar gyfer Unedau 1 a 3, a chyflwyno asesiad di-arholiad Uned 2 ar gael am y tro cyntaf yn haf 2026. Bydd modd cyflwyno asesiad di-arholiad Uned 4 am y tro cyntaf yn haf 2027. Yna bydd pob asesiad ar gael bob cyfres haf.

Caiff y cymhwyster ei ddyfarnu am y tro cyntaf yn 2027.



SUMMARY OF ASSESSMENT

Unit 1: Religious and non-religious beliefs, teachings and practices Written examination: 1 hour 15 minutes 30% of qualification	60 marks
Questions requiring objective responses, questions that require short and extended answers.	
Unit 2: Religion and relationships Non-examination assessment: 6 hours 20% of qualification	60 marks
Set by WJEC, marked by the Centre and moderated by WJEC. The assessment will be based on one of two set themes and a statement which will be set by WJEC annually. The set theme and statement will be available via the WJEC Portal.	
Unit 3: Roles, rights and responsibilities Written examination: 1 hour 15 minutes 30% of qualification	60 marks
Questions requiring objective responses, questions that require short and extended answers.	
Unit 4: Religion and human rights Non-examination assessment: 6 hours 20% of qualification	60 marks
Set and marked by WJEC. The assessment will be based on two of three set human rights issues which will be set by WJEC annually. The set human rights issues will be available via the WJEC Portal.	

This is a unitised, untiered qualification.

Aside from Unit 1, which is an introductory unit, there is no hierarchy implied by the order in which the other units are presented.

The examinations for Units 1 and 3, and the submission of Unit 2, will be available for the first time in summer 2026. The submission of Unit 4 will be available for the first time in summer 2027. Each assessment will then be available every summer series.

The first award of the qualification will be 2027.

Cyfres Sgiliau Skills Suite

CYMWYSTERAU
CENEDLAETHOL  NATIONAL
QUALIFICATIONS

Sgiliau am Oes

- Celf a Chrefft
- Cerddoriaeth, Dawns a Drama
- Cydraddoldeb, Amrywiaeth a Chynhwysiant
- Cyfranogiad Cymunedol
- Cymorth Cyntaf Sylfaenol
- Cynaliadwyedd Ar Waith
- Cynllunio a Pharatoi Bwyd
- Deall Eich Hun ac Eraill
- Democratiaeth Ar Waith
- Dewisiadau Moesegol
- Diogelwch Ar-Lein
- Diogelwch Personol
- Ffilm a Chyfryngau Digidol
- Ffordd Iach o Fyw
- Ffydd a Chred yn y Gymuned
- Garddio Ymarferol
- Gofalu am Eraill
- Gwaith Tîm
- Gwerthoedd ar Gyfer Bywyd
- Gwyddoniaeth a Thechnoleg mewn Bywyd Bob Dydd
- Iaith Arwyddion Prydain
- Iechyd Meddwl a Lles
- Llythrennedd Ariannol
- Perthnasoedd Iach
- Rheoli a Chynnal a Chadw Cartref
- Sgiliau yn yr Amgylchedd Naturiol
- Y Gyfraith Bob Dydd
- Ymarfer Corff i Bawb

Skills for Life

- Art and Crafts
- Basic First Aid
- British Sign Language
- Community Participation
- Democracy In Action
- Digital Film and Media
- Equality, Diversity and Inclusion
- Ethical Choices
- Everyday Law
- Exercise For All
- Faith and Belief in the Community
- Financial Literacy
- Food Planning and Preparation
- Healthy Lifestyle
- Healthy Relationships
- Home Management and Maintenance
- Looking After Others
- Mental Health and Wellbeing
- Music, Dance and Drama
- Online Safety
- Personal Safety
- Practical Gardening
- Science and Technology in Everyday Life
- Skills in the Natural Environment
- Sustainability In Action
- Teamwork
- Understanding Self and Others
- Values for Life

Enghreifftiau o Resymeg Cwricwlwm:

Gwerthoedd, Statws Eglwys a Chrefydd,
Gwerthoedd a Moeseg ar gyfer Ysgolion
Gwirfoddol ac Ysgolion Gwirfoddol a
Gynorthwyr



GwEGogledd.Cymru
@GwEGogleddCymru
post@gwegogledd.cymru

English



Gwirfoddol a Reolir
(yr Eglwys yng Nghymru)



Hawarden Village
Church School

Gwirfoddol a
Gynorthwyr
(yr Eglwys yng Nghymru)



Gwirfoddol a Gynorthwyr
(Catholig)

Elfen Statudol:
Crefydd, Gwerthoedd a
Moeseg

Enghreifftiau o Ddatganiadau
Rhesymeg Cwricwlwm

Pob ysgol

Example Curriculum Rationales:

Values, Church Status and RVE for Voluntary Controlled and Voluntary Aided Schools



GwEGogledd.Cymru

@GwEGogleddCymru

post@gwegogledd.cymru

Cymraeg



Voluntary Controlled (CiW)



Hawarden Village
Church School

Voluntary Aided (CiW)



Voluntary Aided (Catholic)

Mandatory
Element:
RVE

Example Curriculum
Rationale Statements

All Schools

Elfen Statudol: Crefydd, Gwerthoedd a Moeseg

Enghreifftiau o Ddatganiadau Rhesymeg Cwricwlwm

Mae Crefydd, Gwerthoedd a Moeseg yn rhan statudol o Gwricwlwm y Dyniaethau ac yn seiliedig ar gyfres o gysyniadau a syniadau mawr. Mae ein cwricwlwm yn darparu ystod o ddulliau disgyblaethol i gefnogi dysgwyr wrth iddynt fynd i'r afael yn feirniadol ag ystod eang o gredoau athronyddol crefyddol ac anghrefyddol.

- ***(Ysgolion Sir, Ysgolion Sefydledig heb ethos crefyddol ac Ysgolion Gwirfoddol a Reolir)***

Dyluniwyd Crefydd, Gwerthoedd a Moeseg yn ein hysgol i roi sylw i'r Maes Llafur Cytunedig.

- ***(Gwirfoddol a Gynorthwyir – Yr Eglwys yng Nghymru)***

Dyluniwyd Crefydd, Gwerthoedd a Moeseg yn ein hysgol yn unol â gweithredoedd ymddiriedolaeth yr ysgol. Mae Crefydd, Gwerthoedd a Moeseg yn seiliedig ar Ganllawiau ar Grefydd, Gwerthoedd a Moeseg yr Eglwys yng Nghymru ac yn rhoi ystyriaeth i'r Maes Llafur Cytunedig.

- ***(Gwirfoddol a Gynorthwyir – Ysgolion Catholig)***

Dyluniwyd Crefydd, Gwerthoedd a Moeseg yn ein hysgol yn unol â gweithredoedd ymddiriedolaeth yr ysgol ac wrth roi ystyriaeth i'r Maes Llafur Cytunedig.

Mandatory Element: RVE

Example Curriculum Rationale Statements

Religion, Values and Ethics is a mandatory part of our Humanities curriculum and is built upon a series of concepts and big ideas. Our curriculum provides a range of disciplinary approaches to support learners to engage critically with a broad range of religious and non-religious philosophical convictions.

- ***(County Schools, Foundation Schools without a religious ethos and Voluntary Controlled Schools)***

Religion, Values and Ethics in our school has been designed having regards to the Agreed Syllabus.

- ***(Voluntary Aided – Church in Wales)***

Religion, values and ethics (RVE) in our school has been designed in accordance with the trust deeds of the school. Our RVE is informed by the Church in Wales Supporting Guidance for RVE and has regard to the Agreed Syllabus.

- ***(Voluntary Aided – Roman Catholic Schools)***

Religion, Values and Ethics in our school has been designed in accordance with the school's trust deeds and has regard to the Agreed Syllabus.

Disgyblaethol

Amlddisgyblaethol

Rhyngddisgyblaethol

Integredig

Timetable					
Lesson	Mon	Tue	Wed	Thu	Fri
1					
2					
3					
4					
5					

Disciplinary

Multidisciplinary

Interdisciplinary

Integrated

Timetable

Lesson	Mon	Tue	Wed	Thu	Fri
1					
2		RVE			
3					
4					
5					

Timetable

Lesson	Mon	Tue	Wed	Thu	Fri
1					
2		Hum			
3				Hum	
4					
5			Hum		

Amlddisgyblaethol

Timetable

Lesson	Mon	Tue	Wed	Thu	Fri
1			Sci		
2		RVE			
3				Art	
4			History		
5					

Timetable

Lesson	Mon	Tue	Wed	Thu	Fri
1					RVE
2		Geo			
3				History	
4	Social Studies				
5			Business Studies		

Multidisciplinary

Timetable					
Lesson	Mon	Tue	Wed	Thu	Fri
1				Project 1 Belief represented in Art History	
2					
3					
4					
5					

Timetable					
Lesson	Mon	Tue	Wed	Thu	Fri
1				Hum Project Change and Continuity in school's locality	
2					
3					
4					
5					

